

Guidance Book of



University CO-OP

for International Students (Ver. 2024 Spring)

Welcome!

You have to become a member of Osaka University CO-OP to take advantage of the great prices.

Please join the CO-OP membership!

〈 About Osaka University CO-OP 〉

The CO-OP is invested by CO-OP members, and the members can enjoy the CO-OP's privileges which include a few percent discount.

Osaka University CO-OP is a CO-OPerative association related to Osaka University. Anyone who is a part of Osaka University has a right to join the CO-OP. Visitors who belong to other universities are not eligible for the membership to join.

Please note that non-member can't enjoy the privilege.

★If you don't join CO-OP members, you will have to pay 5% extra prices on the most items.

Osaka University CO-OP

<https://www.osaka-univ.coop>



Contents

What is Osaka University CO-OP?.....	1
Why do you need capital to become a CO-OP member?	1
How to join the CO-OP membership?.....	2
How to withdraw from CO-OP Membership?.....	2
~Services~	3
Cafeterias.....	3
Shops.....	5
Books.....	5
Travel Services Center.....	6
My Room Housing.....	7
Administration.....	7
About CO-OP Insurance Program.....	8
Notice about Visitor Pricing.....	9

What is Osaka University CO-OP?

The Osaka University CO-OP is a non-profitable organization which consists of undergraduate students, graduate students, university and CO-OP staff who has registered themselves as CO-OP members.

We provide healthy and nutritious meals in our cafeterias which is located all over the campus. You also can find items needed for your studies in our stores.(*)

(*More information can be found in later sections of this booklet.

Under the CO-Operation of all parties, the primary goal is to improve the life of all in Osaka University.

Our biggest charming is we always listen to our members voices and try our best to make it real.

Why do you need capital to become a CO-OP member?

The University CO-OP is a voluntary organization where members themselves work together to improve their lives. The business is supported by a small amount of money spent by all members. The investment is used as capital for business activities and as operating funds for purchasing equipment and products. The University CO-OP can carry out various business activities through the investment.

One of the contributions of international students at the Osaka University CO-OP is 300 yen according to the Articles of Incorporation. However, the business activities of the University CO-OP are expanding year by year, and the amount of funds required for business activities is also increasing. Therefore, considering the business scale and the number of members,

We ask for an investment of 3,000 yen per person from the union members.

In addition, the full amount of the deposited funds will be returned when you leave the University CO-OP.

How to join the CO-OP membership ?

- (1) Please fill in the necessary items on the “CO-OP Membership Application Form”. The application form can be picked up at the CO-OP office.
- (2) At that time, you are expected to pay the investment 3,000 yen.
- (3) Please download the smartphone app two weeks after applying. The smartphone app will be your CO-OP membership card.
※If you do not have a smartphone, please contact the CO-OP office.
- (4) We hand the temporary card which you can use in CO-OP shop until you receive CO-OP membership card(app).



↑ CO-OP membership app

Temporary card(Those with no reception sign are invalid).→
※Electronic money and meal plans are not available.
Please understand.



How to withdraw from CO-OP membership?

[Required documents]

- ① CO-OP member card or Smartphone screen of CO-OP member app
- ② Personal ID card (student ID, driver license, passport, health insurance card, etc.)

[Refund]

- (a) In case of leaving Osaka University
(For example, graduation, drop out, retirement, expulsion, etc.)
Please come to the CO-OP administration office. You can get the refund on the day.
- (b) In case of NOT leaving Osaka University
(Including business trip, leave of absence, suspension of the employment, etc.)
If you declare your intention of withdrawal in writing by November 30th, you can get the refund of March 1st at the following year.

For more information, please visit our website, refer to the articles of incorporation, or contact the reception desk.

~Services~

Cafeterias

☆ Toyonaka Campus



KANSHITA (Cafeteria under the library)

The cafeteria is located under the main Library.

It is a cafeteria dining room that offers noodles and rice bowls, such as small dishes and fried and stir-fried main dishes.

Since it is open until the evening, it is also used by students after club activities.

This store is the birthplace of the famous “TENSHIN MABO DON” at Osaka University CO-OP! We also offer lunch boxes for lunch.

CO-OP building 3F Cafeteria

Cafeteria dining room where you can enjoy combinations as you like.

This restaurant is located on the 3rd floor of the Toyonaka Welfare Hall.

Serve hot food hot and cold food cold.

This cafeteria is great for those who want to have a quick, cheap and hearty meal.

We also offer the popular “TENSHIN MABO DON”.

Café Quartier

Café Quartier is located on the 1st floor of the Student Commons in Education and Research Building I. It is a place for students, faculty and staff to relax and have peace of mind, as well as a place for information exchange, discussion and interaction. We offer drinks such as coffee and tea, and desserts such as freshly baked bread, pasta, and ice cream at reasonable prices.



Cafeteria KASANE

It is the largest cafeteria on the Toyonaka Campus!

In addition to rice bowls, noodles, and side dishes, this restaurant offers a wide variety of menu items, such as Kasane's original fried chicken that you can't eat at other restaurants, an order corner where the food is cooked right in front of you, and a Halal menu!

SAKA (Museum café)

The coffee beans is sawn right after you order the Espresso coffee, so you can enjoy a true coffee in a wonderful place

☆ Suita Campus

Cafeteria of School of Engineering FAMILLE

In the high-ceilinged and open store, we offer a wide variety of menus that support the campus life of those who use it, such as combinations of main dishes and side dishes, noodles, and rice bowls.

The cafeteria is open for the longest hours on the Suita Campus.

Suita DonDon

A donburi(bowl of rice with food on top) specialty store where you can eat "TENSHIN MABO DON", which is very popular with students. DonDon exclusive menus are also available.

For those who want to eat outside, or who don't have time, you can also use the daily lunch box that you can take home.

Kitchen BISYOKU

This cafeteria is located on the first floor of the Research Institute for Microbial Diseases. You can enjoy an original menu with plenty of vegetables supervised by a registered dietitian, which changes daily.

Kitchen HIDAMARI (café)

Kitchen HIDAMARI is a full-service restaurant located next to the bus terminal in front of Daigaku Honbu on the Suita Campus.

We offer a menu that is different from the school cafeteria. On sunny days, you can enjoy lunch on the terrace. The specialty is the shop's handmade "Karaage Lunch".

Cafeteria TAKUMI

Cafeteria TAKUMI on the south side of the university headquarters building.

This is a restaurant with a calm atmosphere where you can choose dishes that are slightly different from other restaurants. You can purchase lunch box and bread that you can take out.



☆ Minoh Campus

Cafeteria Rainbow

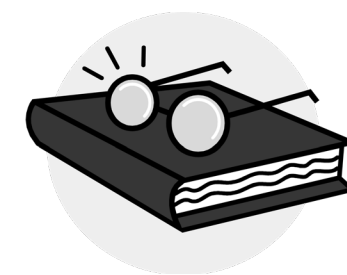
A bright, glass-enclosed cafeteria located on the 3rd floor of Minoh Campus foreign language research and lecture building.

The menu changes weekly, and in addition to side dishes and small bowls, we offer a variety of menus such as rice bowls, noodles, and halal menus.

Shops

In our shops, you can find a lot of stuff to support our member's necessities, both the necessities for study or research and the daily necessities. The main merchandises are

- ☆ Notebooks, files, stationeries
- ☆ Computers and its peripherals
- ☆ Computer's software
- ☆ Breads and box lunch
- ☆ Snacks and beverages
- ☆ Ramen (Japanese noodle), coffee, etc.
- ☆ Daily necessities
- ☆ Osaka University's original goods



Books

- ☆ Variety of Books
Textbooks used in classes, technical books (sciences, medical, etc.), dictionaries, novels, magazines, other English or Japanese books, etc.
- ☆ Others
Book card (Tosho card), the application of some qualifying examinations, etc.

When you purchase the books with CO-OP e-money, you will receive 10% points back.

- Points can be used as electronic money for your next purchase.
- Can be used for textbooks or reference books, other books, CD, DVD.
- If you are a CO-OP member, you can use CO-OP electronic money.
- When you join the CO-OP, you can download the CO-OP member app to your smartphone.
- If you do not have a smartphone, please contact the CO-OP office.

BOOK FAIR

☆Held several times in a year, 15~20% point redemption for books from selected publishers!!

A good chance to purchase expensive technical books Please check the schedule on the web <https://www.osaka-univ.coop/career/02.html>

ONLINE BOOK ORDER

☆ You can search and order books online!! Please access to “Univ.coop Online Book Store” for Japanese books and CDs.

For foreign books is “**Yousho online store**”. (Both of the web sites are Japanese only.) Make a user account and select “receiving at the shop” (Osaka university CO-OP’s book shop).

“Univ.coop Online Book Store” → <http://online.univ.coop/book/>

“**Yousho online store**” → <https://yosho.univcoop.jp/BookShop/>

Travel Service Center

☆ Overseas

Package tour, study abroad tour, discount air tickets(Only at Minoh campus), accommodations, train, ferry, etc.

☆ Domestic

ski tour, JR tickets, highway bus, chartered bus, ferry, accommodations.

☆ Rental Services

Hakama rentals for the graduation ceremony, car rentals.

☆ Travel Insurance

Overseas, local travel insurance

☆ University Entrance and Graduation photo album

☆ Qualification Schools

Judicial Scrivener, Government Servant, Bookkeeping, Accounting, etc.

☆ Employment Events (Company Briefing Session, Internship, etc.)

☆ Driving Schools

My Room Housing (Apartments for rent)

We can help you find a new home, be it just a room or an one room apartment with living room, kitchen, etc., which is located near your campus.

※ For more details.

<https://www.handai-myroom.com/0/0/0/foreigners.eng>

Administration

☆ Joining CO-OP

☆ Withdrawal procedure

☆ Change of status

When you change your address or your faculty while studying at Osaka University, you have to come to the CO-OP administration office because it is necessary to change your member’s record.

The reception desk

☆ Toyonaka Campus : Toyonaka Welfare Hall 4F

☆ Suita Campus : Campus Support Center, 2nd floor of Central Terrace

☆ Suita Campus : Welfare Hall in front of Suita Honbu Mae

☆ Minoh Campus : "Sánti" store on the 3rd floor of the Foreign Language Research and Lecture Building

~Osaka University CO-OP Map & Business ours~

Web: <https://osaka-univ.coop/>

(For more information, please see Web.)



~About CO-OP Insurance Program~

To ensure a quality and safe university life, CO-OP provides 2 kind of insurance for you

- Student Mutual Benefit (Kyosai)
- Personal Liability Insurance for Students (Gakubai)

☆ Student Mutual Benefit (Kyosai)

Students Mutual Benefit is a program where fund was raise from university students and will be used to help among students when accident occur

What are the differences?

- With low payment, you get full protection
- The regulation is designed especially for students
- Full protection even though you are not in Japan as long as you are an university student
- Can be applied easily inside the university campus

☆ Personal Liability Insurance for Students (Gakubai)

The plan covers protection when damages occur to the third parties under your responsibility. It covers **THE HIGEST 3 hundred million yen** protection.

- Fire insurance plan can be added upon required

Application CO-OP Insurance Program

- ① When you want to take out the CO-OP Insurance program, please come to CO-OP office.
- ② Please fill in the application form and pay the insurance premium.
- ③ When all the contracts are concluded, your Entrance Certificate will be sent to your house.

For further information about the content of the insurance, please visit the following website.

<https://kyosai.univcoop.or.jp/>

~Non-member price difference~

From September 19, 2023 (Tuesday), if you do not present your membership card when paying at the cash register of any Osaka University Co-op store, you will be charged the "difference in non-member price" according to the amount spent, as shown in the list below.

※ No refunds will be made after you forget your union membership card and receive the difference in the non-membership price.

When using each cafeteria

Food service

amount used (member rice/Tax included)	Non-member price difference (Tax included)
1 yen~99 yen	5 yen
100 yen~199 yen	11 yen
200 yen~299 yen	22 yen
300 yen~399 yen	33 yen
400 yen~499 yen	44 yen
500 yen~599 yen	55 yen
600 yen or more	66 yen

※Advance reservations for box lunches, parties, etc. When you use the purchasing and travel services at each store [Shop], the "Non-member price difference" table will be applied. The "Non-member price difference" table is applied.

When using the Purchasing and Travel Service stores

Shop

amount used (member rice/Tax included)	Non-member price difference (Tax included)
1 yen~99 yen	5 yen
100 yen~199 yen	11 yen
200 yen~299 yen	22 yen
300 yen~399 yen	33 yen
400 yen~499 yen	44 yen
500 yen~599 yen	55 yen
600 yen~699 yen	66 yen
700 yen~799 yen	77 yen
800 yen~899 yen	88 yen
900 yen~999 yen	99 yen
1,000 yen~1,999 yen	110 yen
2,000 yen~2,999 yen	220 yen
3,000 yen~3,999 yen	330 yen
4,000 yen~4,999 yen	440 yen
5,000 yen~9,999 yen	550 yen
10,000 yen~49,999 yen	1,100 yen
50,000 yen~99,999 yen	5,500 yen
100,000 yen or more	11,000 yen

【exclusion】
trade (money) certificates, publication, Travel Service Products

Service Category	
Takarazuka and other tickets	Purchase is for unionmembers only.
driving school	Application is only for union members.
rental hakama	3,300 yen (Tax included)

※Book purchases are not eligible for the [Non-member price difference].

Osaka University Co-op is a member's store.

Please be sure to join the Osaka University Co-op before using this service.

