

~Fall & Winter~

GUIDEBOOK 2022

Japanese Language Programs
for International Students



大阪大学国際教育交流センター

CIEE Center for
International
Education and
Exchange

<http://ciee.osaka-u.ac.jp/>



Index

◆ Japanese language programs offered by the Center for International Education and Exchange (CIEE)P2
◆ Courses open for enrollmentP2
◆ Course outlinesP3
◆ Contact information for assistanceP5
◆ How do I enroll ?P7
◆ Course timetables and schedulesP9
◆ About OU Multilingual PlazaP13

◆ Japanese language programs offered by CIEE

CIEE offers six Japanese language programs to international students at Osaka University.

- ① Elective Japanese Language Course
- ② Interdisciplinary Education Subjects
- ③ International Exchange Subjects (JA Japanese Language)
- ④ International Exchange Subjects (JGU Japanese Global Understanding)
- ⑤ Liberal Arts & Sciences
- ⑥ Intensive Japanese Language Course ※

※This course is not covered in this guidebook because it requires a different selection process, from course s ①~⑤.

◆ Courses open for enrollment

Eligible courses differ depending on student status.

Note that students may enroll in one course at a time.

- Research Students → Elective Japanese Language Course
No credit, Suita
- Graduate Students → Elective Japanese Language Course
No credit, Suita
Interdisciplinary Education Subjects
International Exchange Subjects (JA)
International Exchange Subjects (JGU)) With credits, Toyonaka
- Under graduate Students → Liberal Arts & Sciences
With credits, Toyonaka
- Special auditors → Elective Japanese Language Course No credit, Suita
International Exchange Subjects (JA)
International Exchange Subjects (JGU)
Liberal Arts & Sciences) With credits, Toyonaka
※ Please consult with the instructors before registering
- Special Research Students → Elective Japanese Language Course
No credit, Suita
- Special Students → No class※
- International scholars and faculty → No class ※

※No class : Please consider visiting OU Multilingual Plaza (P13)

◆Course Outlines

※Students may only enroll in one level at a time (100~700)

Elective Japanese Language Course levels 100~700

□ Target: Enrollment is open to graduate students, research students, special research students, and special auditors at Osaka University.

□ Location : Suita Campus IC Hall 2F

Classes may be held **ONLINE**, depending on the prevalence of COVID-19.

□ Classes: Students can choose any classes suitable to their needs (Japanese proficiency, academic aims, etc.) ,but can only choose one level and one track.

□ Credit: **No academic credit** will be given for this course.

□ Please register for classes through KOAN website.

(※Except some special auditors such as students of FrontierLab@OsakaU)

□ Registration period: **Wednesday, September 28 ~Thursday, October 20**

※Graduate students and some special auditors must check their own department's registration period.

□ Course starts from : **Friday, October 7**

□ Registration cancellation (Please check that this conveys your intended meaning here and throughout) : **Friday, October 21 ~Thursday, November 10**

※ Elective Japanese Language Courses start with **online classes**.

Please register at KOAN.

□ **Attention: Graduate students are not permitted to take elective course's 600 /700 Level. Instead, they must choose "Interdisciplinary Education Subjects" to earn credits.**

※Except the Business Japanese course

Timetable : P9, Schedule : P10

Interdisciplinary Education Subjects (Advanced Japanese for Academic Purposes)

 **Advanced**
level 600 / 700

□ These classes are designed to provide graduate students with the necessary skills for academic reading, writing, and communication in Japanese.

□ This course is for students who pass Level 600 on the Japanese Proficiency Level Check Test.

□ Location: Suita Campus IC Hall 2F

Classes may be held **ONLINE**, depending on the prevalence of COVID-19.

□ Students who attain the prescribed may receive 2 credits per subjects per semester.

□ Please register for classes through the KOAN website.

◆ **Academic Communication (2credits, Wednesday, 4th period, Class code : C50502)**

◆ **Academic Reading (2credits, Monday, 5th period, Class code : C50506)**

◆ **Academic Writing (2credits, Tuesday, 5th period, Class code : C50508)**

◆ **Communication as an independent person in pursuit of diversity**

(1credit, Thursday, 4th period, Class code : C50514)

□ Registration period: **Friday, September 24, 12:00 ~ Friday, October 8, 13:00**

□ Course starts from: **Monday, October 3** ※Academic Reading might start from October 17

□ Registration cancellation : **Tuesday, October 18, 9:30 ~ Monday, October 24, 16:30**

Schedule : P12

International Exchange Subjects (JA) Level 100~400 (Japanese Language)

- ☐ Target: Enrollment is open to graduate students and special auditors (OUSSEP, iExpo etc) at Osaka University.
 - ☐ Level : Four levels ※From Introductory (level 100) to Upper Intermediate (level 400)
 - ☐ Purpose : To provide students with necessary and comprehensive skills in Japanese (speaking, listening, reading and writing)
 - ☐ Credit : Students may receive 4 credits if satisfactory grades are attained.
 - ☐ Time : Most classes are held during 1st period (08:50 to 10:20) .
 - ☐ Lessons are held three times a week, and students must attend ALL classes. If there are multiple tracks, students must choose one to enroll in. (※Track2 is for OUSSEP students)
 - ☐ **Location: Toyonaka Campus**
- Classes may be held **ONLINE**, depending on the prevalence of COVID-19.
- ☐ Note that students may not enroll in other concurrent programs such as elective courses.
 - ☐ Please register for class through the KOAN website (except some special auditors such as students of FrontierLab@OakaU).
 - ☐ Registration period: **Monday, September 26, 13:00 ~ Tuesday, October 11, 13:00**
 - ☐ Course starts from: **Monday, October 3**
 - ☐ Registration cancellation: **Tuesday, October 18, 9:30 ~ Monday, October 24, 16:30**

Timetable : P11, Schedule : P12

International Exchange Subjects (JGU) (Japanese Global Understanding)

 **Advanced**
Level 500/600

- ☐ Target: Enrollment is open to graduate students, special auditors (OUSSEP, iExpo, etc.) at Osaka University only.
 - ☐ Level : Lower Advanced (level 500) and Upper Advanced (level 600)
 - ☐ Purpose : To provide students with comprehensive communication skills in Japanese through theme-specific class activities.
 - ☐ Time : Classes are held during 1st period (08:50 to 10:20) .
 - ☐ **Location: Toyonaka Campus**
- Classes may be held **ONLINE**, depending on the prevalence of COVID-19.
- ☐ Credit : Students may receive 2 credits per class, if satisfactory grades are attained.
 - ☐ Note that students may not enroll in other concurrent programs such as elective courses.
 - ☐ Please register for class through the KOAN website.
(※Except some special auditors such as students of FrontierLab@OsakaU)
 - ☐ Registration period: **Monday, September 26, 13:00 ~ Tuesday, October 11, 13:00**
 - ☐ Course starts from: **Monday, October 3**
 - ☐ Registration cancellation: **Tuesday, October 18, 09:30 ~ Monday, October 24, 16:30**

Timetable : P11, Schedule : P12

Liberal Arts & Sciences



- (1) Japanese for Advanced Communication
- (2) Japanese for Academic Purposes
- (3) Communication in Multicultural Contexts

☐ Enrollment is open to undergraduate students, and special auditors at Osaka University.

☐ Level : Upper Advanced (700 level)

☐ **Location: Toyonaka Campus**

☐ Please register for the class you take through KOAN

☐ Course starts from: **Monday, October 3**

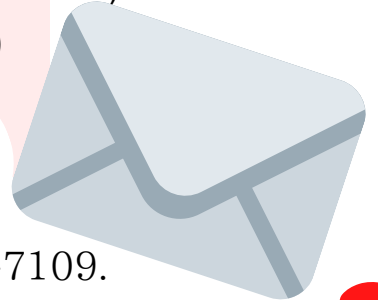
Timetable : P11, Schedule : P12

◆Need help?

If you have any questions, please send an e-mail to jpstaff@ciee.osaka-u.ac.jp !
Staff will respond shortly!

◆Please provide the following information, when contacting us.

- (1) Student ID number (printed on student ID card)
- (2) Student Status (M?D? Research Student?)
- (3) The name of your graduate school



◆If you require immediate assistance, please call 06-6879-7109.

◆You can also visit our office, which is located on Suita Campus, IC Hall, 3F.
※In principle, between 10:00 and 15:00.

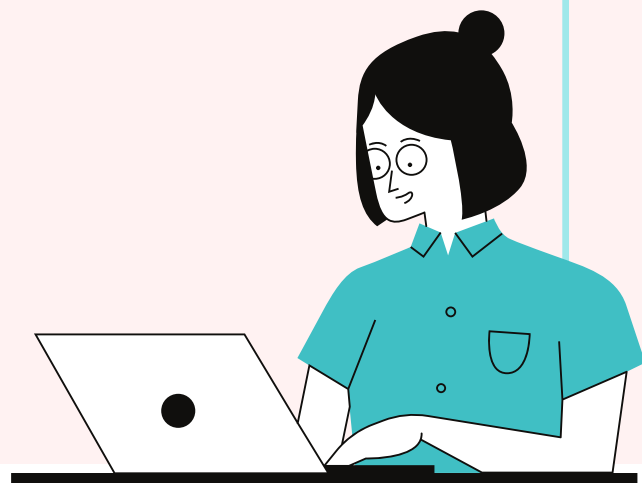


If classes are held **ONLINE
software such as CLE, Zoom, etc
will be used!**

※ Elective Japanese Language Courses start with **online classes**.
Please register at KOAN.

Details for online classes vary from class to class.
Please carefully check the **syllabus** on the KOAN website.
Syllabus : https://KOAN.osaka-u.ac.jp/syllabus_ex/campus

In general, teachers will inform students through OU's CLE system.
Therefore, students must login to OU's CLE system **to access
the relevant Zoom information** sometime before the first class.
CLE : <https://www.cle.osaka-u.ac.jp/>



◆How do I enroll? (Four simple steps)

Please read the following instructions carefully.

Students can also watch a video guide here.

https://ciee.osaka-u.ac.jp/en/education/japanese_program_how-to-enroll/

START ① Take the Japanese Proficiency Level Check

※If you have never studied Japanese before (Level 100), this test is not required.

① Go to (http://nava.ciee.osaka-u.ac.jp/sim_levelcheck/)

② Take the test that matches your level of Japanese.

③ On the results page, enter your Name and Student Number (If you have one). Click "Print as PDF".

④ Download the PDF and submit it to your teacher via CLE or e-mail, or in person at the first class.

※You need to submit it!



② Find the class that fits you best

Search for classes according to your score from the Japanese Proficiency Level Check Test. You can find class syllabi here :
(https://ciee.osaka-u.ac.jp/en/education/japanese_program/)

③ Register through the KOAN website

Please follow the procedure below to register for class.



① Access KOAN and log in.



② Click the Day/Period of the class you want to take.



③ Enter the Course Code and click "Register".



④ If the class appears in the time slot, registration is complete.

※Graduate Students and some Special Auditors must check their own department's registration period.

※In the case of a registration error,
please contact the staffs! (jpstaff@ciee.osaka-u.ac.jp)



GOAL! ④ Attend class

You must submit the downloaded results (PDF) of your Japanese Proficiency Level Check Test to your teacher, at the first class.

◆ Elective Course Timetable @Suita IC Hall 2F

※ Elective Japanese Language Courses start with **online classes**.
Please register at KOAN.

Level 100

※ The code in square ■ is required when you register for class through KOAN website

※ Track1 and Track2 are the **same class**, please choose one.

	Monday	Tuesday	Wednesday	Thursday	Friday
I 8:50 ~10:20		88F1T1 JB100-Track1 Room5 Comprehensive Japanese	Track1	88F1T1 JB100-Track1 Room5 Comprehensive Japanese	
II 10:30 ~12:00		88F1T2 JB100-Track2 Room5 Comprehensive Japanese	Track2	88F1T2 JB100-Track2 Room5 Comprehensive Japanese	

Twice a week

Level 200

	Monday	Tuesday	Wed.	Thur.	Friday
I 8:50 ~10:20	88FK21 Room2 JK201 Kanji and Vocabulary*1	88F2T1 Room2 JB200-Track1 Comprehensive Japanese	Track1	88F2T1 Room2 JB200-Track1 Comprehensive Japanese	
II 10:30 ~12:00	88FK22 Room6 JK202 Kanji and Vocabulary*2	88F2T2 Room3 JB200-Track2 Comprehensive Japanese	Track2	88F2T2 Room3 JB200-Track2 Comprehensive Japanese	

Level 300

※1 JK201/JK301: For students who don't use kanji in their mother language

※2 JK202/302: For students who use kanji in their mother language

	Monday	Tuesday	Track1	Thursday	Friday
I 8:50 ~10:20		88F3T1 JB300-Track1 Room3 Comprehensive Japanese	88FK31 Room3 JK301 Kanji and Vocabulary*1	88F3T1 JB300-Track1 Room3 Comprehensive Japanese	
II 10:30 ~12:00	88FK32 JK302 Room6 Kanji and Vocabulary*2	88F3T2 JB300-Track2 Room6 Comprehensive Japanese	Track2	88F3T2 JB300-Track2 Room6 Comprehensive Japanese	

Twice a week

Level 400

	Monday	Tuesday	Wed.	Thursday	Friday
I 8:50 ~10:20			88FW42 JW400-Track2 Room6 Academic Writing		
II 10:30 ~12:00			88FC41 JC400-Track1 Room5 Academic Communication		
IV 15:10 ~16:40	88FW41 JW400-Track1 Room6 Academic Writing		88FC42 JC400-Track2 Room5 Academic Communication		

※Same content class
You cannot attend both

※Same content class
You cannot attend both

※Not necessarily have to choose all class

Level 500

	Monday	Tuesday	Wednesday	Thursday	Fri.
I 8:50 ~10:20			88FW52 JW500-Track2 Room6 Academic Writing		
II 10:30 ~12:00			88FC51 JC500-Track1 Room5 Academic Communication	88FB50 BJ500 Room5 Business Communication in Japanese	
IV 15:10 ~16:40	88FW51 JW500-Track1 Room6 Academic Writing		88FC52 JC500-Track2 Room5 Academic Communication		

※Same content class
You cannot attend both

※Not necessarily have to choose all class

段落テキスト

Level 600

	Monday	Tue.	Wed.	Thursday	Friday
II 10:30 ~12:00	✗ Graduate Student →		88FC60 Room6 JC600 Academic Communication	88FB60 BJ600 Room5 Business Communication in Japanese	← Graduate Student ○
III 13:30 ~15:00				88FB60 JW600 Room6 Academic Writing	← Graduate Student ✗
IV 15:10 ~16:40					
V 16:50 ~18:20	88FR60 JR600 Room6 Academic Reading	← Graduate Student ✗			※Not necessarily have to choose all class

Level 700

	Monday	Tue.	Wed.	Thursday	Friday
II 10:30 ~12:00	✗ Graduate Student →		88FC70 Room6 JC700 Academic Communication	88FB70 BJ700 Room5 Business Communication in Japanese	← Graduate Student ○
III 13:30 ~15:00				88FB70 JW700 Room6 Academic Writing	← Graduate Student ✗
IV 15:10 ~16:40					
V 16:50 ~18:20	88FR70 JR700 Room6 Academic Reading	← Graduate Student ✗			※Not necessarily have to choose all class

◆ Elective Course

Schedule for Fall and Winter Semester

①st~⑮th : Number of times class is held

※IC Hall 2F,
Suita Campus

day month	Monday	Tuesday	Wednesday	Thursday	Friday
2022 October	3	4	5	6	①
	No class	①	①	①	②
	10	11	12	13	14
	①	②	②	②	③
	17	18	19	20	21
	②	③	③	③	④
November	24	25	26	27	28
	③				
	31				
		④	④	No class	No Class
		1	2	3	4
	No Class	⑤	⑤	④	⑤
December	7	8	9	10	11
	④	⑥	⑥	⑤	⑥
	14	15	16	17	18
	⑤	⑦	No class	⑥	⑦
	21	22	23	24	25
	⑥	Monday⑦	⑦		
2023 January	28	29	30		
		↑		⑦	⑧
		Attention !		1	2
	⑧	⑧	⑧	⑧	⑨
	5	6	7	8	9
	⑨	⑨	⑨	⑨	⑩
February	12	13	14	15	16
	⑩	⑩	⑩	⑩	⑪
	19	20	21	22	23
	⑪				
	26	27	28	29	31
2023 January	2	3	⑪	⑪	⑫
	No class	⑪	⑫	⑫	No Class
	9	10	11	12	13
	⑫	⑫	⑬	⑬	⑬
	16	17	18	19	20
	⑬	⑬	⑭	⑭	⑭
February	23	24	25	26	27
	⑭	⑭			
	30	31			
			⑮	⑮	⑮
			1	2	3
	⑮	⑮			
February	6	7	8	9	10

Class Starts from
Fri. October 7th

Registration period
(If you are
research student)

Wed. September 28th

~

Thu. October 20th

※Graduate Students
and some Special
Auditors must check
their own department's
registration period.

**Confirmation of
Registration**

Mon. October 24th

**Registration
Cancellation**

Fri. October 21st

~

Thu. November 10th

◆ Timetable for Fall and Winter Semester

JA & JGU

&

Liberal Arts & Science

※Toyonaka Campus

International Exchange Subjects (JA・JGU)

Liberal Arts and Science

	Monday		Tuesday		Wednesday		Thursday	
	Class	Teacher	Class	Teacher	Class	Teacher	Class	Teacher
I 8:50 ~ 10:20 	①②③ : ①②③ : You must attend JA classes 3 times a week Track2 is for OUSSEP students only		① JA100 Track1 (code:881229) & JA100 Track2 (code: 881230) ※joint class	Namba	② JA100Track1 (code:881229) Okada		③ JA100Track1 (code:881229) Kageyama	
					② JA100Track2 (code:881230) Hanai		③ JA100Track2 (code:881230) Hanai	
					② JA100Track3 (code:881233) Sumi yoshi		③ JA100Track3 (code:881233) Sumi yoshi	
			① JA200 Track1 (code:881231) & JA200 Track2 (code: 881232) ※joint class	Ohtani	② JA200Track1 (code:881231) Uenaka		③ JA200Track1 (code:881231) Yabe	
					② JA200Track2 (code:881232) Handa		③ JA200Track2 (code:881232) Handa	
			① JA300 Track1 (code:881234)	Sumi yoshi	② JA300 Track1 (code:881234) & JA300 Track2 (code: 881235) ※joint class	Naka mata	③ JA300 Track1 (code:881234) Ueda	
			① JA300 Track2 (code:881235)	Ueda			③ JA300 Track2 (code:881235) Okazaki	
			① JA400 Track1 (code:881236)	Miyazaki	② JA400 Track1 (code:881236) Okazaki		③ JA400 Track1 (code:881236) & JA400 Track2 (code: 881237) ※joint class	Yoshinaga
			① JA400 Track2 (code:881237) Yabe		② JA400 Track2 (code:881237) Yabe			
			JGU500a (code:881282) Han		JGU500b (code:881283) Fujisawa		JGU500c (code:881284) Nakamata	
			JGU600a (code:881273) Okazaki		JGU600b (code:881274) Ohtani		JGU600c (code:881275) Obara	
II 10:30~ 12:00			① JA100Track3 (code:881233) Namba					
III								
IV								
V 16:50~ 18:20	Japanese for Academic Purposes	Yoshi naga	Japanese for Academic Purposes	Namba	Japanese for Academic Purposes	Muraoka	Japanese for Advanced Communication	Fukura
	Communication in Multicultural Contexts	Okamoto	Communication in Multicultural Contexts	Nishi mura	Communication in Multicultural Contexts	Ohtani		

◆ JA & JGU ◆ Liberal Arts & Science ◆ Interdisciplinary Education Subjects

Schedule for Fall and Winter Semester

①st~⑮th : Number of times class is held

day month	Monday	Tuesday	Wednesday	Thursday	Friday
2022 October	① 3	① 4	① 5	① 6	① 7
	No class 10	② 11	② 12	② 13	② 14
	② 17	③ 18	③ 19	③ 20	③ 21
	③ 24	④ 25	④ 26	④ 27	④ 28
	④ 31				
November		⑤ 1	⑤ 2	No class 3	No Class 4
	No Class 7	⑥ 8	⑥ 9	⑤ 10	⑤ 11
	⑤ 14	⑦ 15	⑦ 16	⑥ 17	⑥ 18
	⑥ 21	⑧ 22	No class 23	⑦ 24	⑦ 25
	⑦ 28	Monday⑧ 29	⑧ 30		
December		↑ Attention !		⑧ 1	⑧ 2
	⑨ 5	⑨ 6	⑨ 7	⑨ 8	⑨ 9
	⑩ 12	⑩ 13	⑩ 14	⑩ 15	⑩ 16
	⑪ 19	⑪ 20	⑪ 21	⑪ 22	⑪ 23
	⑫ 26	27	28	29	31
2023 January	2	3	⑫ 4	⑫ 5	⑫ 6
	No class 9	⑫ 10	⑬ 11	⑬ 12	No Class 13
	⑬ 16	⑬ 17	⑭ 18	⑭ 19	⑬ 20
	⑭ 23	⑭ 24	⑮ 25	⑮ 26	⑭ 27
	⑮ 30	⑮ 31			
February			1	2	⑮ 3

Class Starts from
Mon. October 3rd

Registration Period
Mon. Sept. 26th 13:00
~
Tue. Oct. 11th 13:00

Registration Cancel
Tue. Oct. 18th 9:30
~
Mon. Oct. 24th 16:30

◆ Extracurricular Japanese language learning support



OU Multilingual Plaza



OU Multilingual Plaza provides support for Japanese language learning outside of class. This facility is available to all students, researchers, and staff members of Osaka University. It is located on the 4F of the Cybermedia Center at the Toyonaka Campus and on the 2F of the IC Hall at the Suita Campus.



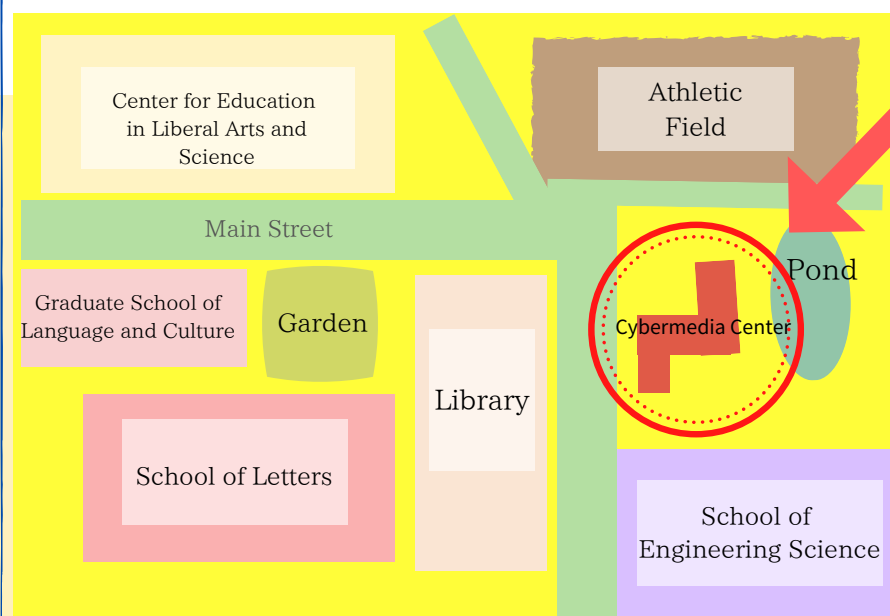
At OU Multilingual Plaza, you can find Japanese language materials, conversation practice, tutoring, workshops, and events.

You can also consult with an advisor about Japanese language learning on Tuesdays from 15:10 to 15:50 and from 16:00 to 16:40 (registration required) . For further information, please check the following website .

Website : <https://www.lang.osaka-u.ac.jp/cme/plaza/>

 **E-mail :** plaza@lang.osaka-u.ac.jp

Toyonaka Campus Map



**The Toyonaka office
is located here**

★ Japanese Language Advisers

Tuesday 15:10~16:40

★ Cyber Media Center 4 F

★ Suita branch is located on
the 2F, Room4
of the IC Hall Suita Campus!