

~Fall & Winter~

GUIDEBOOK 2022

Japanese Language Programs
for International Students



大阪大学国際教育交流センター

CIEE Center for
International
Education and
Exchange

<http://ciee.osaka-u.ac.jp/>



Index

- ◆ Japanese language programs offered by the Center for International Education and Exchange (CIEE)P2
- ◆ Courses open for enrollmentP2
- ◆ Course outlinesP3
- ◆ Contact information for assistanceP5
- ◆ How do I enroll ?P7
- ◆ Course timetables and schedulesP9
- ◆ About OU Multilingual PlazaP13



◆ Japanese language programs offered by CIEE

CIEE offers six Japanese language programs to international students at Osaka University.

- ① Elective Japanese Language Course
- ② Interdisciplinary Education Subjects
- ③ International Exchange Subjects (JA Japanese Language)
- ④ International Exchange Subjects (JGU Japanese Global Understanding)
- ⑤ Liberal Arts & Sciences
- ⑥ Intensive Japanese Language Course ※

※This course is not covered in this guidebook because it requires a different selection process, from course s ①~⑤.

◆ Courses open for enrollment

Eligible courses differ depending on student status.

Note that students may enroll in one course at a time.

- Research Students → Elective Japanese Language Course
No credit, Suita
- Graduate Students → Elective Japanese Language Course
No credit, Suita
Interdisciplinary Education Subjects
International Exchange Subjects (JA)
International Exchange Subjects (JGU)) With credits, Toyonaka
- Under graduate Students → Liberal Arts & Sciences
With credits, Toyonaka
- Special auditors → Elective Japanese Language Course No credit, Suita
International Exchange Subjects (JA)
International Exchange Subjects (JGU)) With credits, Toyonaka
Liberal Arts & Sciences
※ Please consult with the instructors before registering
- Special Research Students → Elective Japanese Language Course
No credit, Suita
- Special Students → No class※
- International scholars and faculty → No class ※

※No class : Please consider visiting OU Multilingual Plaza (P13)

◆ Course Outlines

※Students may only enroll in one level at a time (100~700)

Elective Japanese Language Course levels 100~700

□ Target: Enrollment is open to graduate students, research students, special research students, and special auditors at Osaka University.

□ Location : Suita Campus IC Hall 2F

Classes may be held **ONLINE**, depending on the prevalence of COVID-19.

□ Classes: Students can choose any classes suitable to their needs (Japanese proficiency, academic aims, etc.) ,but can only choose one level and one track.

□ Credit: **No academic credit** will be given for this course.

□ Please register for classes through KOAN website.

(※Except some special auditors such as students of FrontierLab@OsakaU)

□ Registration period: **Wednesday, September 28 ~Thursday, October 20**

※Graduate students and some special auditors must check their own department's registration period.

□ Course starts from : **Friday, October 7**

□ Registration cancellation (Please check that this conveys your intended meaning here and throughout) : **Friday, October 21 ~Thursday, November 10**

□ **Attention: Graduate students are not permitted to take elective course's 600 /700 Level. Instead, they must choose "Interdisciplinary Education Subjects" to earn credits.**

※Except the Business Japanese course

Timetable : P9, Schedule : P10

Interdisciplinary Education Subjects (Advanced Japanese for Academic Purposes)

Advanced
level 600 / 700

□ These classes are designed to provide graduate students with the necessary skills for academic reading, writing, and communication in Japanese.

□ This course is for students who pass Level 600 on the Japanese Proficiency Level Check Test.

□ Location: Suita Campus IC Hall 2F

Classes may be held **ONLINE**, depending on the prevalence of COVID-19.

□ Students who attain the prescribed may receive 2 credits per subjects per semester.

□ Please register for classes through the KOAN website.

◆ **Academic Communication (2credits, Wednesday, 4th period, Class code : C50502)**

◆ **Academic Reading (2credits, Monday, 5th period, Class code : C50506)**

◆ **Academic Writing (2credits, Tuesday, 5th period, Class code : C50508)**

◆ **Communication as an independent person in pursuit of diversity**

(1credit, Thursday, 4th period, Class code : C50514)

□ Registration period: **Friday, September 24, 12:00 ~ Friday, October 8, 13:00**

□ Course starts from: **Monday, October 3** ※Academic Reading might start from October 17

□ Registration cancellation : **Tuesday, October 18, 9:30 ~ Monday, October 24, 16:30**

Schedule : P12

International Exchange Subjects (JA) Level 100~400 (Japanese Language)

- Target: Enrollment is open to graduate students and special auditors (OUSSEP, iExpo etc) at Osaka University.
 - Level : Four levels ※From Introductory (level 100) to Upper Intermediate (level 400)
 - Purpose : To provide students with necessary and comprehensive skills in Japanese (speaking, listening, reading and writing)
 - Credit : Students may receive 4 credits if satisfactory grades are attained.
 - Time : Most classes are held during 1st period (08:50 to 10:20) .
 - Lessons are held three times a week, and students must attend ALL classes. If there are multiple tracks, students must choose one to enroll in. (※Track2 is for OUSSEP students)
 - Location: Toyonaka Campus**
- Classes may be held **ONLINE**, depending on the prevalence of COVID-19.
- Note that students may not enroll in other concurrent programs such as elective courses.
 - Please register for class through the KOAN website (except some special auditors such as students of FrontierLab@OakaU).
 - Registration period: **Monday, September 26, 13:00 ~ Tuesday, October 11, 13:00**
 - Course starts from: **Monday, October 3**
 - Registration cancellation: **Tuesday, October 18, 9:30 ~ Monday, October 24, 16:30**

Timetable : P11, Schedule : P12

International Exchange Subjects (JGU) (Japanese Global Understanding) **Level 500/600**

- Target: Enrollment is open to graduate students, special auditors (OUSSEP, iExpo, etc.) at Osaka University only.
 - Level : Lower Advanced (level 500) and Upper Advanced (level 600)
 - Purpose : To provide students with comprehensive communication skills in Japanese through theme-specific class activities.
 - Time : Classes are held during 1st period (08:50 to 10:20) .
 - Location: Toyonaka Campus**
- Classes may be held **ONLINE**, depending on the prevalence of COVID-19.
- Credit : Students may receive 2 credits per class, if satisfactory grades are attained.
 - Note that students may not enroll in other concurrent programs such as elective courses.
 - Please register for class through the KOAN website.
(※Except some special auditors such as students of FrontierLab@OsakaU)
 - Registration period: **Monday, September 26, 13:00 ~ Tuesday, October 11, 13:00**
 - Course starts from: **Monday, October 3**
 - Registration cancellation: **Tuesday, October 18, 09:30 ~ Monday, October 24, 16:30**

Timetable : P11, Schedule : P12

Liberal Arts & Sciences



- (1) Japanese for Advanced Communication
- (2) Japanese for Academic Purposes
- (3) Communication in Multicultural Contexts

Enrollment is open to undergraduate students, and special auditors at Osaka University.

Level : Upper Advanced (700 level)

Location: Toyonaka Campus

Please register for the class you take through KOAN

Course starts from: **Monday, October 3**

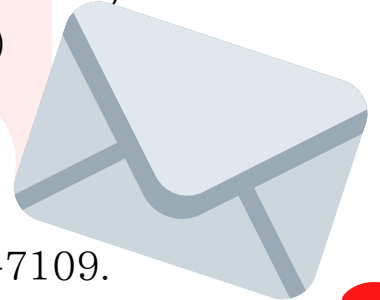
Timetable : P11, Schedule : P12

◆ Need help?

If you have any questions, please send an e-mail to jpstaff@ciee.osaka-u.ac.jp !
Staff will respond shortly!

◆ Please provide the following information, when contacting us.

- (1) Student ID number (printed on student ID card)
- (2) Student Status (M?D? Research Student?)
- (3) The name of your graduate school



◆ If you require immediate assistance, please call 06-6879-7109.

◆ You can also visit our office, which is located on Suita Campus, IC Hall, 3F.

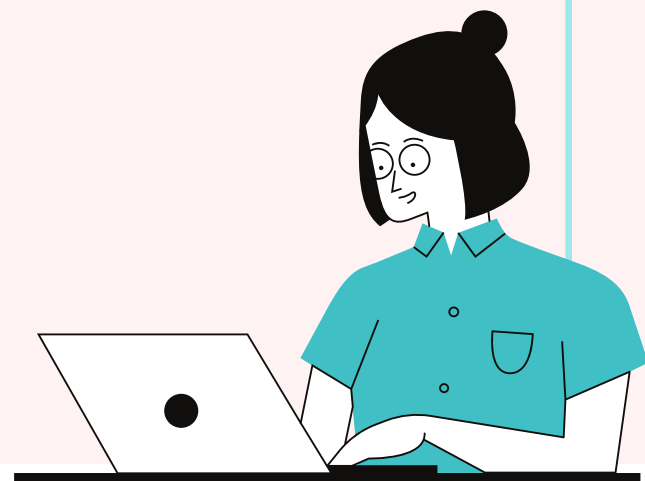
※ In principle, between 10:00 and 15:00.



If classes are held **ONLINE**
software such as CLE, Zoom, etc
will be used!

Details for online classes vary from class to class.
Please carefully check the **syllabus** on the KOAN website.
Syllabus : https://KOAN.osaka-u.ac.jp/syllabus_ex/campus

In general, teachers will inform students through OU's CLE system.
Therefore, students must login to OU's CLE system **to access**
the relevant Zoom information sometime before the first class.
CLE : <https://www.cle.osaka-u.ac.jp/>



◆ How do I enroll? (Four simple steps)

Please read the following instructions carefully.

Students can also watch a video guide here.

https://ciee.osaka-u.ac.jp/en/education/japanese_program_how-to-enroll/

START ① Take the Japanese Proficiency Level Check

※If you have never studied Japanese before (Level 100), this test is not required.

① Go to (http://nava.ciee.osaka-u.ac.jp/sim_levelcheck/)

② Take the test that matches your level of Japanese.

③ On the results page, enter your Name and Student Number (If you have one). Click "Print as PDF".

④ Download the PDF and submit it to your teacher via CLE or e-mail, or in person at the first class.

※You need to submit it!



② Find the class that fits you best

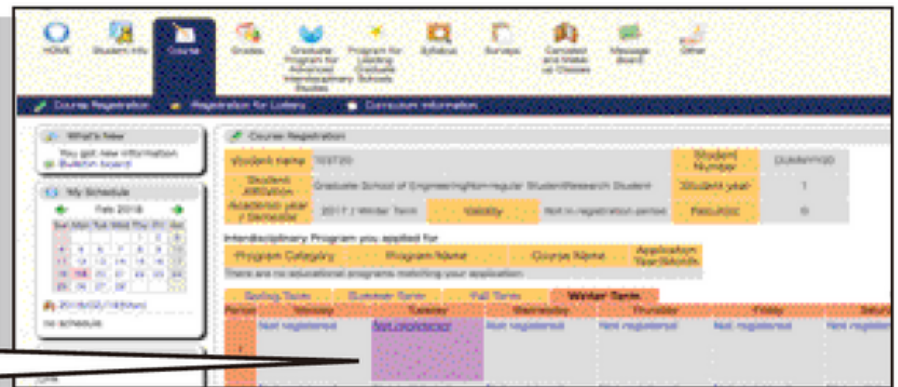
Search for classes according to your score from the Japanese Proficiency Level Check Test. You can find class syllabi here :
(https://ciee.osaka-u.ac.jp/en/education/japanese_program/)

③ Register through the KOAN website

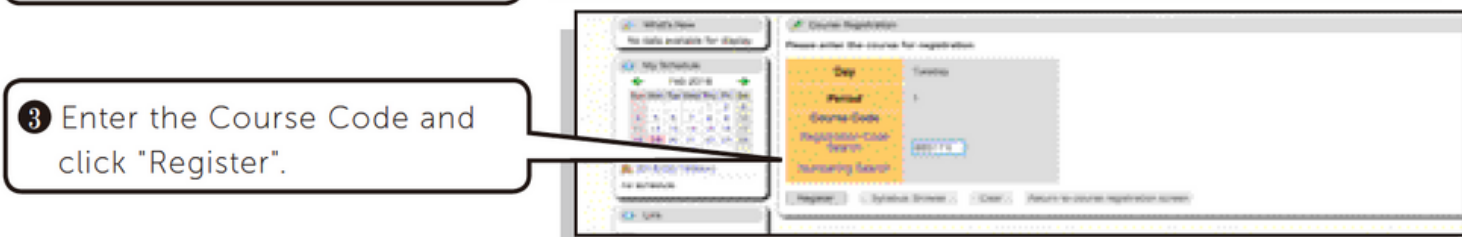
Please follow the procedure below to register for class.



① Access KOAN and log in.



② Click the Day/Period of the class you want to take.



③ Enter the Course Code and click "Register".



④ If the class appears in the time slot, registration is complete.

※Graduate Students and some Special Auditors must check their own department's registration period.

※In the case of a registration error,
please contact the staffs! (jpstaff@ciee.osaka-u.ac.jp)



GOAL! ④ Attend class

You must submit the downloaded results (PDF) of your Japanese Proficiency Level Check Test to your teacher, at the first class.

◆ Elective Course Timetable @Suita IC Hall 2F

※The code in square ■ is required when you register for class through KOAN website

※ Track1 and Track2 are the same class, please choose one.

Level 100

	Monday	Tuesday	Wednesday	Thursday	Friday
I 8:50 ~10:20		88F1T1 Room5 Comprehensive Japanese	Track1 Twice a week		88F1T1 Room5 Comprehensive Japanese
II 10:30 ~12:00		88F1T2 Room5 Comprehensive Japanese	Track2		88F1T2 Room5 Comprehensive Japanese

Level 200

	Monday	Tuesday	Wed.	Thur.	Friday
I 8:50 ~10:20	88FK21 Room2 JK201 Kanji and Vocabulary*1	88F2T1 Room2 JB200-Track1 Comprehensive Japanese	Track1		88F2T1 Room2 JB200-Track1 Comprehensive Japanese
II 10:30 ~12:00	88FK22 Room6 JK202 Kanji and Vocabulary*2	88F2T2 Room3 JB200-Track2 Comprehensive Japanese	Track2		88F2T2 Room3 JB200-Track2 Comprehensive Japanese

※1 JK201/JK301: For students who don't use kanji in their mother language

※2JK202/302: For students who use kanji in their mother language

Level 300

	Monday	Tuesday	Wednesday	Thursday	Friday
I 8:50 ~10:20		88F3T1 Room3 Comprehensive Japanese	Track1		88F3T1 Room3 Comprehensive Japanese
II 10:30 ~12:00	88FK32 JK302 Room6 Kanji and Vocabulary*2	88F3T2 Room6 Comprehensive Japanese	Track2		88F3T2 Room6 Comprehensive Japanese

Level 400

	Monday	Tuesday	Wed.	Thursday	Friday
I 8:50 ~10:20			88FW42 Room6 Academic Writing		
II 10:30 ~12:00	※Same content class You cannot attend both		88FC41 Room5 Academic Communication	※Same content class You cannot attend both	
IV 15:10 ~16:40	88FW41 Room6 Academic Writing		88FC42 Room5 Academic Communication	※Not necessarily have to choose all class	

Level 500

	Monday	Tuesday	Wednesday	Thursday	Fri.
I 8:50 ~10:20	※Same content class You cannot attend both		88FW52 Room6 Academic Writing		
II 10:30 ~12:00			88FC51 Room5 Academic Communication	88FB50 Room5 Business Communication in Japanese	
IV 15:10 ~16:40	88FW51 Room6 Academic Writing		88FC52 Room5 Academic Communication	※Not necessarily have to choose all class	

段落テキスト

	Monday	Tue.	Wed.	Thursday	Friday
II 10:30 ~12:00	✗ Graduate Student →		88FC60 Room6 JC600 Academic Communication	88FB60 Room5 BJ600 Business Communication in Japanese	← Graduate Student ○
III 13:30 ~15:00				88FB60 Room6 JW600 Academic Writing	← Graduate Student ✗
V 16:50 ~18:20	88FR60 Room6 JR600 Academic Reading	← Graduate Student ✗		※Not necessarily have to choose all class	

Level 700

	Monday	Tue.	Wed.	Thursday	Friday
II 10:30 ~12:00	✗ Graduate Student →		88FC70 Room6 JC700 Academic Communication	88FB70 Room5 BJ700 Business Communication in Japanese	← Graduate Student ○
III 13:30 ~15:00				88FB70 Room6 JW700 Academic Writing	← Graduate Student ✗
V 16:50 ~18:20	88FR70 Room6 JR700 Academic Reading	← Graduate Student ✗		※Not necessarily have to choose all class	

◆ Elective Course

Schedule for Fall and Winter Semester

①st~⑮th : Number of times class is held

※IC Hall 2F,
Suita Campus

day month	Monday	Tuesday	Wednesday	Thursday	Friday
2022 October					①
	3	4	5	6	7
	No class	①	①	①	②
	10	11	12	13	14
	①	②	②	②	③
	17	18	19	20	21
November	②	③	③	③	④
	24	25	26	27	28
	③				
	31				
		④	④	No class	No Class
		1	2	3	4
December	No Class	⑤	⑤	④	⑤
	7	8	9	10	11
	④	⑥	⑥	⑤	⑥
	14	15	16	17	18
	⑤	⑦	No class	⑥	⑦
	21	22	23	24	25
2023 January	⑥	Monday⑦	⑦		
	28	29	30		
		↑ Attention!		⑦	⑧
				1	2
	⑧	⑧	⑧	⑧	⑨
	5	6	7	8	9
February	⑨	⑨	⑨	⑨	⑩
	12	13	14	15	16
	⑩	⑩	⑩	⑩	⑪
	19	20	21	22	23
	⑪				
	26	27	28	29	31
2023 January			⑪	⑪	⑫
	2	3	4	5	6
	No class	⑪	⑫	⑫	No Class
	9	10	11	12	13
	⑫	⑫	⑬	⑬	⑬
	16	17	18	19	20
2023 February	⑬	⑬	⑭	⑭	⑭
	23	24	25	26	27
	⑭	⑭			
	30	31			
			⑮	⑮	⑮
			1	2	3
2023 February	⑮	⑮			
	6	7	8	9	10

Class Starts from
Fri. October 7th

Registration period
(If you are
research student)

Wed. September 28th
~
Thu. October 20th

※Graduate Students
and some Special
Auditors must check
their own department's
registration period.

**Confirmation of
Registration**

Mon. October 24th

**Registration
Cancellation**

Fri. October 21st
~
Thu. November 10th

◆ Timetable for Fall and Winter Semester

JA & JGU



Liberal Arts & Science

※Toyonaka Campus

International Exchange Subjects (JA · JGU)

Liberal Arts and Science

	Monday		Tuesday		Wednesday		Thursday			
	Class	Teacher	Class	Teacher	Class	Teacher	Class	Teacher		
I 8:50 ~ 10:20 	①②③ : ①②③ : You must attend JA classes 3 times a week		① JA100 Track1 (code:881229) & JA100 Track2 (code: 881230) ※joint class	Namba	② JA100Track1 (code:881229) Okada		③ JA100Track1 (code:881229) Kageyama			
					② JA100Track2 (code:881230) Hanai		③ JA100Track2 (code:881230) Hanai			
					② JA100Track3 (code:881233) Sumi yoshi		③ JA100Track3 (code:881233) Sumi yoshi			
				① JA200 Track1 (code:881231) & JA200 Track2 (code: 881232) ※joint class	Ohtani	② JA200Track1 (code:881231) Uenaka		③ JA200Track1 (code:881231) Yabe		
						② JA200Track2 (code:881232) Handa		③ JA200Track2 (code:881232) Handa		
				① JA300 Track1 (code:881234) Sumi yoshi	Ueda	Naka mata	② JA300 Track1 (code:881234) & JA300 Track2 (code: 881235) ※joint class		③ JA300 Track1 (code:881234) Ueda	
				① JA300 Track2 (code:881235) Ueda					③ JA300 Track2 (code:881235) Okazaki	
				① JA400 Track1 (code:881236) Miyazaki	Yabe		② JA400 Track1 (code:881236) Okazaki		③ JA400 Track1 (code:881236) & JA400 Track2 (code: 881237) ※joint class Yoshinaga	
				① JA400 Track2 (code:881237) Yabe						
				JGU500a (code:881282) Han	Okazaki		JGU500b (code:881283) Fujisawa		JGU500c (code:881284) Nakamata	
	JGU600a (code:881273) Okazaki	JGU600b (code:881274) Ohtani	JGU600c (code:881275) Obara							
II 10:30~ 12:00			① JA100Track3 (code:881233) Namba							
III										
IV										
V 16:50~ 18:20	Japanese for Academic Purposes	Yoshi naga	Japanese for Academic Purposes	Namba	Japanese for Academic Purposes	Muraoka	Japanese for Advanced Communication	Fukura		
	Communication in Multicultural Contexts	Okamoto	Communication in Multicultural Contexts	Nishi mura	Communication in Multicultural Contexts	Ohtani				

Track2 is for
OUSSEP students
only

◆ JA & JGU ◆ Liberal Arts & Science ◆ Interdisciplinary Education Subjects

Schedule for Fall and Winter Semester

①st~⑮th : Number of times class is held

day month	Monday	Tuesday	Wednesday	Thursday	Friday
2022 October	① 3	① 4	① 5	① 6	① 7
	No class 10	② 11	② 12	② 13	② 14
	② 17	③ 18	③ 19	③ 20	③ 21
	③ 24	④ 25	④ 26	④ 27	④ 28
	④ 31				
	November		⑤ 1	⑤ 2	No class 3
No Class 7		⑥ 8	⑥ 9	⑤ 10	⑤ 11
⑤ 14		⑦ 15	⑦ 16	⑥ 17	⑥ 18
⑥ 21		⑧ 22	No class 23	⑦ 24	⑦ 25
⑦ 28		Monday⑧ 29	⑧ 30		
December		↑ Attention!		⑧ 1	⑧ 2
	⑨ 5	⑨ 6	⑨ 7	⑨ 8	⑨ 9
	⑩ 12	⑩ 13	⑩ 14	⑩ 15	⑩ 16
	⑪ 19	⑪ 20	⑪ 21	⑪ 22	⑪ 23
	⑫ 26	⑫ 27	⑫ 28	⑫ 29	⑫ 31
2023 January			⑫ 4	⑫ 5	⑫ 6
	No class 9	⑫ 10	⑬ 11	⑬ 12	No Class 13
	⑬ 16	⑬ 17	⑭ 18	⑭ 19	⑬ 20
	⑭ 23	⑭ 24	⑮ 25	⑮ 26	⑭ 27
	⑮ 30	⑮ 31			
February			1	2	⑮ 3

**Class Starts from
Mon. October 3rd**

Registration Period
Mon. Sept. 26th 13:00
~
Tue. Oct. 11th 13:00

Registration Cancel
Tue. Oct. 18th 9:30
~
Mon. Oct. 24th 16:30

◆ Extracurricular Japanese language learning support

OU Multilingual Plaza



OU Multilingual Plaza provides support for Japanese language learning outside of class. This facility is available to all students, researchers, and staff members of Osaka University. It is located on the 4F of the Cybermedia Center at the Toyonaka Campus and on the 2F of the IC Hall at the Suita Campus.



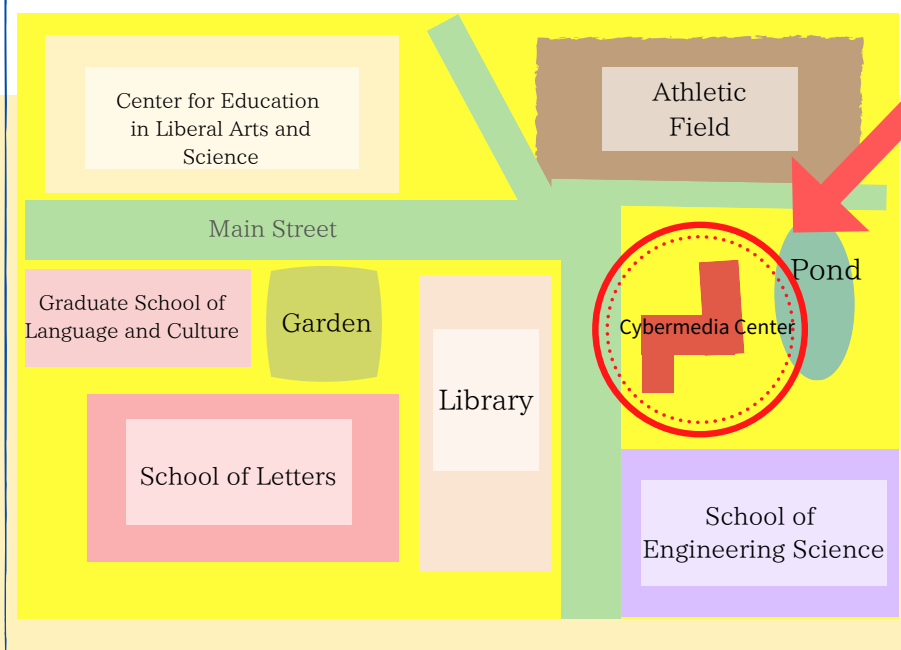
At OU Multilingual Plaza, you can find Japanese language materials, conversation practice, tutoring, workshops, and events.

You can also consult with an advisor about Japanese language learning on Tuesdays from 15:10 to 15:50 and from 16:00 to 16:40 (registration required) . For further information, please check the following website .

Website : <https://www.lang.osaka-u.ac.jp/cme/plaza/>

✉ E-mail : plaza@lang.osaka-u.ac.jp

Toyonaka Campus Map



**The Toyonaka office
is located here**

★ Japanese Language Advisers

Tuesday 15:10~16:40

★ Cyber Media Center 4 F

★ Suita branch is located on
the 2F, Room4
of the IC Hall Suita Campus!