


# **2022 Spring orientation for new international students (general edition)**

Center for International Education and Exchange (CIEE)  
Information Room for International Students (IRIS)



## Emergency Card

※Carry this at all times 

### English Available

Emergency Card 	
※Carry this at all times	
<b>Emergency Call</b>	
• <b>110 (POLICE: ACCIDENT, CRIME)</b>	
• <b>119 (FIRE DEPT. : FIRE, EMERGENCY MEDICAL SERVICES)</b>	
• <b>JAPAN IR&amp;C SUPPORT CENTER</b>	
Language: Japanese/English/Chinese	
TEL(toll-free): <b>0120-119-075 (daily, 24 hours)</b>	
<b>University Offices</b>	
• 短プロチーム事務室 (TEAM STEP Office) : TEL.06-6879-7128	
• IRIS : TEL.06-6879-7076	
• 国際学生交流課(International Student Affairs Division) : TEL.06-6879-4026	

Japanese only

### MY INFORMATION

名前/NAME: \_\_\_\_\_

住所/ADDRESS: \_\_\_\_\_

プログラム/PROGRAM: \_\_\_\_\_

大学/UNIVERSITY: 大阪大学/Osaka University

緊急連絡先/EMERGENCY CONTACT: \_\_\_\_\_

To All International Students

Osaka University decided to implement the "24 hours Inbound Emergency Support System" which provides consultation and advice for accidents, health problems and other accidents might occur in your daily life while your stay in Japan as an Osaka University student.

Consultation is conducted by the telephone and E-mail. This system is offered in 3 languages (English, Chinese and Japanese), please contact to "JAPAN IR&C SUPPORT CENTER" in case when you're involved in any accidents and troubles.

◇You may use the service when:

- You are in troubles and don't know how to respond.
- You are having difficulty solving problems because of language and cultural differences etc.



●JAPAN IR&C SUPPORT CENTER

Language: Japanese/English/Chinese

TEL(toll-free): 0120-119-075 (daily, 24 hours)

E-mail: CS-inb@i-rac.co.jp

※Please use E-mail service if you're not in an urgent situation.

※Please note that the telephone dialogues relating to consultation/advice will be automatically recorded for the purpose of maintaining the s

Emergency Card

Search

JAPANESE

ENGLISH

About CIEE

Education

Research / Development

Inbound Short-Term Programs

Outbound Programs

Student Support

International Exchange

Collaboration / Contribution



大阪大学  
OSAKA UNIVERSITY

Center for International Education and Exchange

Intercultural Collaboration Hall, Osaka University  
1-1 Yamada, Suita, Osaka  
565-0871 Japan

Copyright ©  
CIEE Osaka University.  
All rights reserved.



## “Support Students’ Global Learning and Growth”



For International Students at Osaka University

- International Exchange
- Education
- Career Support

For Students Who Wish to Study Abroad

- Consultation
- Study Abroad Seminars
- Overseas Training

Short-term Programs at Osaka University

- Exchange Programs
- Summer/Winter Programs
- Internships

For Those Who Wish to Learn Japanese

- Japanese Programs
- Japanese Level Check
- Support for Self-directed Learning

For Faculty & Staff

Contact

CIEE

(Center for International Education and Exchange)

2022 Spring

# Information from CIEE

(Center for International Education and Exchange)



## Learning Japanese (Detail information : <http://www.ciee.osaka-u.ac.jp/learning-japanese>)

### ★Elective Japanese Language Course International Students

Registration period : Mar.28<sup>th</sup> (Mon.) ~Apr. 21<sup>st</sup> (Thu.)  
Classes begin:Apr.11<sup>th</sup> (Mon.)

Distributed only at the  
orientation for International  
Students & Scholars

## Information

### ★IRIS Letter

If you would like to get the IRIS letter from IRIS, CIEE with various kinds of information and announcements about up-coming events and activities. Please send e-mail : [iris@ciee.osaka-u.ac.jp](mailto:iris@ciee.osaka-u.ac.jp)

### ★Orientation for International Students & Scholars ( By Support Office & IRIS )

Mar.30<sup>th</sup> (Wed.)   【English】   13:00~reception, 13:30~start  
                          【Japanese】 14:30~reception, 15:00~start  
                          Center for Education in Liberal Arts and Science(CELAS), Building A, 2F 201, Toyonaka Campus

Apr.7<sup>th</sup> (Thu.)    【English】   13:00~reception, 13:30~start  
                          【Japanese】 14:30~reception, 15:00~start  
                          Convention Center, 1F Training Room, Suita Campus

Detail information : <https://iss-intl.osaka-u.ac.jp/supportoffice/>  
<https://www.ciee.osaka-u.ac.jp>

- \* We'll let you know by email if there are any changes in implementation method.
- \* Information about registration system of Japanese courses (for international students) included.

## Activities in local community (As of February 2022)

### ★School Visit Program(online) ※Target: [international students who are in Japan](#)

You can talk about your home country and have fun with local students (online).  
If you are interested, please fill in the form at IRIS, Toyonaka Branch or Minoh Branch.

### ★Osaka University Host family Program (OHP) (Home Visit Type)

This program  
Application  
Form avail

**Due to COVID-19 outbreak,  
OHP is canceled.**

(Toyonaka Campus)

Detail information : Information Room for International Students (IRIS)  
<TEL>06-6879-7076 <E-mail>[iris@ciee.osaka-u.ac.jp](mailto:iris@ciee.osaka-u.ac.jp)

Information from CIEE



## IRIS (Information Room for International Students)

### Information Room for International Students (I R I S)

- Open to international students on each campus as a space for exchange, consultation, information and guidance, and a place to hold events.
- The place for many international students, Japanese students, faculty and administrative staff of Osaka University, international researchers and their families, as well as host families and volunteers of local communities visit and meet through many kinds of international exchange activities.
- Facilities: wifi, computers, books, magazines, etc.
- Information: scholarship, Japanese language programs, international exchange activities, events, recycled items, study abroad, others

### Information Room for International Students (I R I S), Suita

<b>Address</b>	〒565-0871 IC Hall 2F, 1-1 Yamadaoka, Suita, Osaka <a href="#">Map(Suita Campus)</a> (No.3 Center for International Education and Exchange)
<b>TEL&amp; FAX</b>	Phone: 06-6879-7076 (dir.) Fax: 06-6879-7119
<b>Email</b>	Email: iris[at]ciee.osaka-u.ac.jp
<b>Open</b>	08:30-18:00 (Monday – Friday)
<b>Office Closed</b>	Saturday, Sunday, national holidays, December 29 – January 3,



About CIEE

Education

Research / Development

Inbound Short-Term Programs

Outbound Programs

Student Support

International Exchange

Collaboration / Contribution



Center for International Education and Exchange

Intercultural Collaboration Hall, Osaka University  
1-1 Yamada, Suita, Osaka  
565-0871 Japan

Copyright ©  
CIEE Osaka University.  
All rights reserved.

IRIS (Information Room for International Students)

# Reminding you to take thorough countermeasures against COVID-19

All Osaka University Staff and Students should follow the rules below to minimize restrictions on Lectures / classes, Research, and Extracurricular activities.

## Be absolutely sure to comply with the following rules

- **Always wear a mask.**  
If you are indoors, you must wear a mask. Even if you are talking outdoors, wear a mask!
- **Eat alone, or refrain from speaking while not wearing a mask when eating with others.**  
Please wait until you have finished eating and wear your mask before talking.  
Eating/drinking in groups, visiting friends, going out to events (karaoke, etc.), or other activities with more than one person can increase the spread of the virus.
- **If you have cold-like symptoms such as a fever or cough, consult with a primary care doctor or a public health center and do NOT attend your classes, lectures, labs, etc.**
- **You must follow the instructions of the public health care center and/or Osaka University**  
Give top priority to orders such as staying at home or receiving a PCR test.
- **Immediately contact the university about the details of your discussion with the public health center.**  
Contact the academic affairs section of your department.  
During nights and holidays, email [covid-19@dash.osaka-u.ac.jp](mailto:covid-19@dash.osaka-u.ac.jp)

COVID-19 countermeasures at OU

# IRIS Letter あいりす通信



IRIS Letter provides you with various information and announcements about upcoming events and activities. If you would like to receive IRIS Letter, please fill in the registration sheet at IRIS or you can just send us an E-mail with your 1) name, 2) faculty or course, 3) nationality. 学内外の留学生関係のイベント情報やお知らせがメールで届く IRIS Letter。受信を希望する人は IRIS で登録するか、1) 名前、2) 学部（またはコース）、3) 国籍を以下のメールアドレスに送ってください。

IRIS 【iris@ciee.osaka-u.ac.jp】

あいりすレター：IRIS Letter 20XX No.1 (20XX.4)

\* 今回の IRIS レター \*

1. 20XX 年度春~夏学期 留学生対象日本語プログラム
2. 学内バス運行のお知らせ
3. 学生定期健康診断

\* Contents of this IRIS-letter \*

1. Japanese Language Program for International Students, 20XX Spring~Summer
2. The schedule of inter-campus shuttle bus
3. Student medical checkups

::::: 1. 2022 年度春~夏学期 留学生対象日本語プログラム

日本語を学びたい留学生のために様々なプログラムを提供しています。

大阪大学の留学生なら誰でも受講できます。授業開始：4月 〇〇日(月)、手続きはすべてウェブで行います。履修登録締め切りは4月△△日(金)です。

詳細は[こちら](#)をご覧ください。

::::: 1. Japanese Language Program for International Students, 20XX Spring~Summer

Osaka University offers a variety of courses for those who want to learn Japanese.

Anyone who is an international student of Osaka University can take courses in the program.

Registration is handled over the internet. Classes begin on April 〇〇 (Mon.).

Class registration ends on April △△(Fri.) .

Click [here](#) for more information.

::::: 2. 学内バス運行のお知らせ

4月 〇〇日(月)から学内バスが運行しています。

詳細は[こちら](#)をご覧ください。

::::: 2. The schedule of inter-campus shuttle bus

School buses are in service from April 〇〇 (Mon.).

Click [here](#) for more information.

Sample  
20XX/16



# The IRIS School Visit Volunteer / Program



## IRIS 学校交流ボランティア

Target: International students who are in Japan / 日本在住留学生対象-

How about talking about your home country and interacting with international students?  
Please fill in a registration form at IRIS, Toyonaka branch office.  
You can also send 1) name, 2) student ID number, 3) name of your school to IRIS.  
School Visit Volunteer / Program” in the subject line. You can also send the following information.  
\* Work permit for part-time jobs (Permission to engage in activities outside of residence previously granted) is required in order to participate.

地域の小・中・高等学校の児童・生徒たちと（オンラインで）交流したい方は、興味のある人は IRIS か豊中分室か箕面分室で登録してください。または件名に「the IRIS School Visit Volunteer Program」と入力して以下のメールアドレスに 1) 名前、2) 学籍番号、3) 出身国、を送ってください。以下のような詳しいプログラムのメールが届きます。

\*このプログラムに参加するためには資格外活動許可が必要です。

Only for international students who live in Japan. Scholars, and international students who live abroad can't join.

### IRIS School Visit Program [sv@ciee.osaka-u.ac.jp]

IRIS スクールビジットボランティアプログラムに登録しているみなさんへ (20XX/00/00)

To: International Students who have registered at the IRIS School Visit/Volunteer Program.

このメールは IRIS スクールビジットボランティアプログラムに登録しているみなさんに送っています。参加できる人は返信して下さい。

#### 【注意】

- \* 授業がある人は参加できません。
- \* 申込者が多い場合は参加できないことがあります。

We are sending this e-mail to those of you who have registered at the IRIS School Visit/Volunteer Program. Please reply to us via email if you can join in any of the following programs.

#### 【NOTE】

- \* You can't skip your classes due to this program.
- \* Sometimes you can't join in case there are a lot of applicants.

日時：〇月〇日（土） 14:00 - 16:00

学校名：ABC 高等学校

学年：高校 1～2 年生（15-17 歳）30 人

内容：自国紹介、文化交流

交流言語：英語

募集人数：15 名

学校の先生との事前打ち合わせ：△月△日（月）16：30～

【締切】△月〇日(火) 正午

Date & Time: O/O(Sat.) 14:00-16:00

Name of the school: ABC senior high school

Grade: from 10th grader to 11th grader (15 to 17 years old), 30 students

Contents: introducing your country, cultural exchange

Language: English

Volunteers to be invited: 15 international students

Advanced meeting with schoolteachers: △/△ (Mon.) 16:30-

【Deadline】△/〇 (Tue.) Noon

詳しくはこちら (日本語) <https://ciee.osaka-u.ac.jp/inte>  
(English) <https://ciee.osaka-u.ac.jp/en/>

Sample  
sample

School Visit Program



I want to practice Japanese.

I have a little question...

I feel like talking with someone.

I wonder where to ask about this...

What shall I do in this 10minutes to kill time??

Why don't you talk with us via Zoom?

# Zoom Chat Time

**\*Date & Time: 16:00 – 17:00 Weekdays**

**\*How to Join: We will provide you with the Zoom URL.  
Please send an email to IRIS  
( [iris@ciee.osaka-u.ac.jp](mailto:iris@ciee.osaka-u.ac.jp) )  
with the following information.**

**Subject "Zoom Chat Time"**

**(1) Name, (2) Student ID number,  
(3) What you want to talk about (optional)**

**\*Target: Osaka University Students  
(both international and local) only**

**※If you have any questions or need  
consultation, email us or visit us  
directly.**

**(After contacting via email, we may set  
up an appointment for a zoom consultation.)**

IRIS [Information Room for  
Center for International

Zoom Chat Time

# 新しく大阪大学の仲間になった学生\*の皆さんへ

## Dear New Students\*, WELCOME TO OSAKA UNIVERSITY!

大阪大学は学生の皆さん1人1人が充実した勉学生活を送れるようサポートしています。このパンフレットにある「阪大初心者向け Q&A」や留学生相談室マップなどにある様々なサポーターを是非活用してください！

\*このパンフレットは留学生を主な対象としていますが、阪大が初めての一般学生にも参考になります。

Osaka University supports every one of you, so that you can have a fruitful academic and campus life at Osaka University.

This pamphlet has been put together with the aim of supporting your life at Osaka University with such information as "Q&As for newcomers to Osaka University" and a "Map of Advising Rooms for International Students." We sincerely hope it will be useful for you.

\*Although this pamphlet has been made with the new international students in mind, it will also be useful to all new students to Osaka University.

### 阪大初心者向け Q&A

**Q1** 大阪大学に入ったばかりで、まだどこに何があるかわからないし、とても不安です。

I am totally new to Osaka University and feel that I know nothing. I feel lost.

### "Q&As for Newcomers to Osaka University"

**Q2** 初めて1人で生活をはじめたので、知り合いも友人もいません。

I have just started a new life here at Osaka by myself. I know no one. I have no friends here.

**Q3** 日本語に（英語にも）自信がなく、コミュニケーションに不安があります。

I am not good at Japanese (English), and I don't know whether I can communicate with people here.

**Q4** これから大阪大学での勉強や研究がちゃんとできるか心配です。

I am worried whether I will do well in my studies and research at Osaka University.

**Q5** 大阪大学に来る前に想像していたことと今の自分の状況が違って、どうしていいかわかりません。

The image I had before coming to Osaka University is so different from what I am facing now. I do not know what to do.

## OU Consultation Room Map

大阪大学留学生支援フロントスタッフネットワーク作成（2021/03 第13版）

By Front Staff Network in Support for International Students, Osaka University

改訂 Revised 2022/03





[TEL] Toyonaka: 06-6850-6038 Suita: 06-6879-8970 Minoh: 072-730-5151

Correspondence time 9:00 to 12:00 13:00 to 17:00 [Click here for details Opening / closing information](#)

The (former) Campus Life Health Support Center was integrated with the (former) Harassment Counseling Office on November 1, 2021 to become the Campus Life Health Support and Counseling Center. (There is no change in English notation and abbreviation)

### COVID-19 infection

<Osaka> Implementation of free inspection business Response to the new coronavirus (Osaka University)

If you have any questions about health care related to the new coronavirus infection, HaCC will also respond via the web or telephone. Please call the Mind and Body Concierge first.

## Information for students

Regular health check / certificate

Support for mind and body

Support for students with disabilities

Female outpatient

Non-smoking outpatient

Various initiatives

FAQ

Injured / When will the medical examination results be issued? // Where should I consult? // Anxiety and worries / I'm having trouble with my life and relationships / I want to know the medical treatment schedule / Ask for consideration in class and exams

[目的から探す](#)

## Information for faculty and staff

Support for mind and body

Stress check

Medical examination

Female outpatient

Non-smoking outpatient

Application for issuance of various documents / I want to know the schedule of staff medical examination / Book a health check / Check the medical treatment schedule / Reasonable accommodation for students / I want to talk / Vaccinations and various tests

[目的から探す](#)

## Tag cloud

News from HaCC event Corona / CORONA **Schedule** stress With peers Kaori Nakanishi Closed / closed information  
 Medical examination Suita Hiroshi Taki **Student regular health checkup** Regular health check  
**Ryohei Yamamoto** Freshman Keiko Takiyama Special business Lifestyle illness Lifestyle habit Consultation support  
 Consultation support room the study Manabu Tanaike Minoh Regular staff health checkup obesity consultation  
 Medical treatment certificate Toyonaka Closed

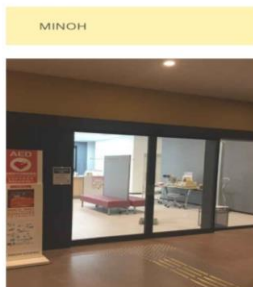
## Access map



Wide area map  
TEL: 06-6850-6038



Wide area map Campus map  
TEL: 06-6879-8970

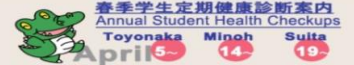


Wide area map  
TEL: 072-730-5151

I was interviewed by NHK!

"It is clear that college students living alone tend to get fat easily!"

>> [To the press release list](#)



## notice

- [ZOOM held] New Year Talk (Yururi and Peer Salon Part10) February 21, 2022
- The employment support seminar held on February 28 has reached the capacity, so application acceptance has been closed. February 14, 2022
- Notice of Spring Student Regular Health Examination February 8, 2022
- We are looking for a part-time student for regular student health examination February 2, 2022
- News from Peer February 2021 Issue Notice January 31, 2022
- Internal medicine / orthopedic leave information (as of 1/31) January 31, 2022
- [ZOOM held] 2021 tired party! ~ Why don't you give chocolates and rewards to yourself who worked hard this year or next? ~ (Closed to

- Mental emergency contact
- Barrier-free map
- Campus AED installation location
- Open / closed
- Infectious disease information
- Vaccination (excluding new corona vaccine), etc.

## Past information

- News from HaCC (2)
- Event (37)
- Notice (97)
- Press Release (11)
- All parties / To all (8)
- Student (61)
- Faculty / Staff (5)
- Consultation support department (22)
- Important / NOTICE (3)

HACC\_osaka's tweet

Osaka University Campus Life Health Support

At Peer Tomo, we regularly hold the event "Yururi to Peer Salon" to create opportunities and places for students to interact with each other. "New Year Talk" will be held online (Web conferencing service ZOOM) on March 9, 2022 (Wednesday). →hacc.osaka-u.ac.jp/arc3yururitop...

## Inter-Campus Shuttle Bus Service

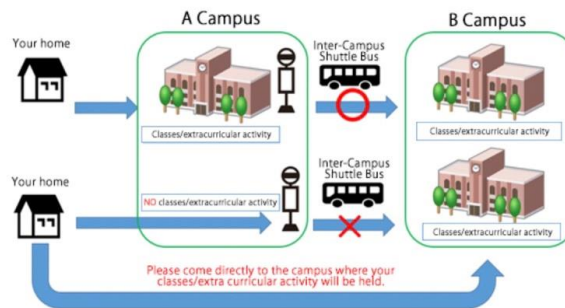
\*Passengers must wear a mask while riding the inter-campus shuttle bus.

The Inter-Campus Shuttle Bus Service is a free shuttle bus service that runs between the three campuses -- Toyonaka, Suita, and Minoh. This goal of this service is to cut down on the time burden that comes with moving between campuses in order to secure a comfortable working environment for OU students, faculty, and staff.

**Students and faculty and staff members can use these buses for attending classes, participating in extracurricular activities, and education and research-related activities on other campuses; however, neither can use them for commuting.**

\*Do not use the Inter-Campus Shuttle Bus Service for commuting; please use public transportation to commute to your main study/research location.

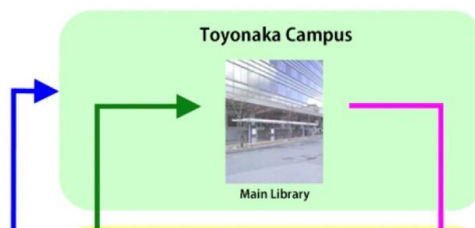
\*You may, however, use the Inter-Campus Shuttle Bus Service to travel between campuses if you must attend courses on a different campus than your main study/research location.



### Please observe the following to prevent the spread of COVID-19 on buses:

- All passengers must wear a mask (except for individuals who cannot safely wear a mask) and use the hand sanitizer dispenser set up in the bus when boarding.
- Refrain from talking on the bus.
- To reduce capacity on buses, avoid rush hours if possible and refrain from crowding onto the bus. Make sure you have plenty of time to avoid being late for work or class.
- Maintain safe physical distancing while standing on the bus.
- Maintain physical distance at bus stops and avoid congregating in groups while waiting for the bus.
- Bus timetables are subject to change depending on the level of passenger occupancy in buses in order to prevent the spread of the virus.
- Buses will be in operation with windows kept open and ventilation systems running.

### Bus Stops





Guidance Book of



# University COOP

for International Students

## ***Welcome!***

You have to become a member of Osaka University  
COOP to take advantage of the great prices.

**Please join the COOP membership!**

### **< About Osaka University COOP >**

The COOP is invested by COOP members, and the members can enjoy the COOP's privileges which include a few percent discount.

Osaka University COOP is a cooperative association related to Osaka University. Anyone who is a part of Osaka University has a right to join the COOP. Visitors who belong to other universities are not eligible for the membership to join. Please note that non-member can't enjoy the privilege.

**★If you don't join COOP members, you will have to pay 5% extra prices on the most items.**

**Osaka University COOP**

**<http://www.osaka-univ.coop>**



University CO-OP

Disaster and Crime Prevention

Disaster Prevention Information

Tips for Disaster Prevention!

Nowadays earthquakes, heavy rains and typhoons occur anywhere in Japan. It is recommended for you to protect yourselves with the following tips.

When an earthquake occurs... (When you receive an emergency alert message...)

◆ Protect yourself / 身を守る

(Indoors) Get under a **table or desk**.  
(Outdoors) Keep away from **block walls, signboards, glass windows**.



◆ When the ground stops shaking / 揺れがなくなったら

Make sure that the **fire is out**, and **cut off the electricity** by **switching off the circuit breaker**.  
If a fire starts, put it out quickly and calmly.  
Open **doors and windows** to **secure an exit**.



◆ When you evacuate - go to an emergency shelter / 逃げるとき・避難所に向かうとき

Bring an **emergency kit** (※1)  
**Cover your head** with a bag or cushion.  
Wear **socks and shoes**.  
**Do not use a car** to evacuate.  
Walk away from **block walls, signboards, glass windows**.  
**Get accurate information** from television, radio, internet and local authorities, etc.

※1 What items in an emergency kit?  
Water, food, medicine (its prescription), portable radio, flashlight, battery, lighter, gloves, can opener, towel, raincoat, underwear, socks, valuables, passport, residence card and copy of health insurance card, etc.



◆ Prepare for disasters / 日ごろの備え

Set to receive **emergency alert messages** (※2)  
Familiarize yourself with the **free emergency message recording service**.  
**Secure the furniture in place**, and keep them from falling or moving with an earthquake.  
Make sure **the location for the emergency shelter**.

※2 What is emergency alert messages?  
Emergency earthquake alerts, tsunami warnings, emergency warnings and disaster/evacuation information may be delivered to your mobile phone. (Free of charge. Settings to receive alerts may vary by device.)

Prepare for an emergency kit.  
**Store contact information** of your family, friend and local embassy **in your mobile phone**, and also place them **in your passport or residence card**.  
Check **Osaka Disaster Prevention Net** (※3)

※3 Osaka Disaster Prevention Net  
<http://www.osaka-bousai.net/e.add.hp.transer.com/pref/index.html>



When a heavy rain/a typhoon occurs...  
Get **accurate weather information** from television, radio and internet.  
**Check around outside your house**, and put anything can be blown by wind in a house.  
**Do not go outside**. Prepare for an emergency kit.

国際教育交流センター留学生交流情報室「IRIS」

Tips for Disaster Prevention

1. Public LAN/ WIFI

You can access the internet via the free public LAN/Wifi during natural disasters by using SSID "00000 JAPAN" (select 00000Japan in the Wifi connection menu).

2-1 Safety Tips (Website: EN/CN/TW/KO App: 15Languages)

This site contains links to the communication cards, information for procedures to follow during natural disasters and assists in the search for Medical Institutions nearest to you  
<https://www.jnto.go.jp/safety-tips/eng/2/index.html>

2-2 Osaka Disaster Prevention Net

This site contains links to the evacuation centers, municipalities, traffic, lifelines in Osaka pref.  
<http://www.osaka-bousai.net/e.add.hp.transer.com/pref/index.html>

2-3 Osaka Safe Travels (12 Languages)

Provides general safe travel/stay information in Osaka  
<https://www.osaka safetravels.com>

2-4 Japan Meteorological Agency (14 Languages)

Weather (weather, heavy rain, high temperature, etc.) / earthquake/tsunami/ volcano information  
<https://www.jma.go.jp/jma/kokusai/multi.html>

2-5 Disaster Management in Japan, Cabinet Office Japan

Helpful Disaster Management Apps and Websites (Multilingual)  
<http://www.bousai.go.jp/kokusai/web/index.html>

2-6 List of Embassies and Consulates in Japan (2 Languages)

<https://www.mofa.go.jp/mofaj/link/embassy.html>

2-7 NHK World TV & Radio (18 Languages)

<https://www3.nhk.or.jp/nhkworld/>

2-8 Disaster Emergency Message Dial "171" & Disaster Emergency Message Board "Web171"

This is a message board used during natural disasters, e.g. earthquakes, volcanic eruption, torrential rains etc. to confirm the safety of individuals. Due to increased phone calls during natural disasters, please use this line to help in reducing communication loads on the phone network to confirm safety of individuals.

• Disaster Emergency Message Dial (171)  
<https://www.ntt-west.co.jp/denpon/english/>

• Disaster emergency message board (web171)  
<https://www.ntt-west.co.jp/denpon/web171/english/>

2-9 Fire and Disaster Management Agency of the Ministry of Internal Affairs and Communications (E-Collage for Disaster prevention / crisis management)

<https://www.fdma.go.jp/relocation/e-collage/>

Crime Prevention information

Tips for Crime Prevention!

Nowadays it is not always true that Japan is a safe country. It is recommended for you to protect yourselves with the following tips.

◆ While you stay at home... / 在宅中...

Never open the door before identifying visitors!

Avoid revealing that you live alone!

ex. When you dry your laundry, hide it from the public eye.  
Choose simple curtains for your safety.

When looking for an apartment  
It is generally safer to live:  
- on the second floor or higher  
- in an apartment building with automated locks

◆ When you go out... / 外出するとき...

Whenever you go out, make sure to **lock doors!**

◆ While you go out... / 外出中...

If you have a handbag or purse, **hold them with a hand**.  
**Avoid dark and lonely roads** at night.

※Take well-lit main streets even if it goes dark.  
Listening to music by wearing **headphones** will shut out your surroundings!

※Holding your cell phone to be able to call #110 anytime.  
Holding a **'crime prevention buzzer'** to protect yourselves.  
※You can purchase the buzzer at 100-yen shops.

Disaster & Crime Prevention



- CIEEについて
- 教育・学習支援
- 研究・開発
- 阪大への短期留学
- 阪大からの留学
- 留学生サポート
- 国際交流
- 学内外との連携・社会貢献



大阪大学  
OSAKA UNIVERSITY

大阪大学  
国際教育交流センター

〒565-0871  
大阪市山田区1-1 ICホール内

Copyright ©  
CIEE Osaka University.  
All rights reserved.

Cautions

## Cautions on consumption of Alcoholic beverages

College students have a lot of opportunities to drink such as welcoming parties, college festivals, and club parties. However, with these increased opportunities, come an increase in serious alcohol-related incidents, some resulting in student death! Although you may not be aware of it, certain student have suffered acute alcohol poisoning and some have even been rushed to a hospital in an ambulance.

Much of this acute alcohol poisoning is caused by binge drinking. At parties, **avoid getting yourself involved in binge drinking** in any way! Don't do such drinking yourself and never get involved in making someone else binge drink!

**Remember :** *If you should be involved in forcing someone (or even encouraging someone) to binge drink and that person later is involved in a serious incident such as their death or a traffic accident, you could be charged as an accessory under criminal and/or civil law.*

First and foremost :

- Drinking by minors is against the law.

Cautions

## Substance abuse -- not a joking matter

ATTENTION, ALL STUDENTS...

Cautions

## Be careful not to give in to cult solicitation

NEW! Check out the official Osaka University YouTube Channel for videos on strategies to avoid cult solicitation:

[\[ Part 1 \]](#) [\[ Part 2 \]](#) [\[ Part 3 \]](#)

There are some cults that pretend to be a sports club or a volunteer club to approach students, especially freshmen, and take them to a church or game arcade to admit them into the club. Unfortunately, some OU students have been victimized.

These groups advocate "deepening friendship," "thinking of life," "considering the environment," etc. However, they are actually antisocial destructive cults built on a one-way dependent relationship.

# Tips for living in a rental apartment in Japan

## House rules / points for daily attention

- Read over your lease contract, the resident manual and follow the instruction.
- You are not permitted to live with someone who isn't on the lease.
- Be careful not to be noisy late at night.
- Follow the rules for taking out the garbage.

(The way for putting out the garbage differs depending on the neighborhood in which you live, so ask the landlord (the management company) or the municipal office about the rules for taking out the garbage.)

- Please contact the landlord (the management company) and the department office immediately when you have any troubles in your apartment.



## When you leave your apartment for a long time...

- Be sure to pay your rent in advance when you leave your apartment for a long time, such as an extended leave or travel for temporary visit.
- You should also inform the landlord (the management company) and the department office that you will be away for a long time.



## When you move out...

- You should notify the landlord (the management company) that you wish to move out at least one month in advance.
- Please do not leave any of your possessions or garbage behind and ensure that it is clean.
- You should check in advance how to dispose home appliances and bulky garbage.



Along with the landlord (the management company), you should check the degree to which restoration (returning the apartment to its original condition) is required. Payment may be required if there are things left in the room or if the room is damaged. As such, it is important to keep your apartment in a good condition and clean it properly at the end.

## ◎Comprehensive Insurance for Students Lives Coupled with “Gakkensai”◎

You would be required to enroll in an insurance, because the resident must respond to a large amount of compensation claims when an accident or fire occurs. Osaka University offers you “Comprehensive Insurance for Students Lives Coupled with ‘Gakkensai’”. You can also make use of “Coop-Rent Insure”, Joint guarantee agent system, in case you need a guarantor.



For more details, please visit the following websites:

### Rules for rental apartments in Japan

<Support Office for Int'l Students and Scholars, Osaka Univ.>

<https://iss-intl.osaka-u.ac.jp/supportoffice/wp-content/uploads/2021/08/Rules-for-rental-apartments-in-Japan-en.pdf>

Move-in <Support Office for Int'l Students and Scholars, Osaka Univ.>

<https://iss-intl.osaka-u.ac.jp/supportoffice/eng/housing/procedures/move-in/>





# Useful Websites and Apps for International Students and Scholars

**APP** ...smartphone apps

## 大学生活/Campus Life

[大阪大学生協](#)  
[OSAKA UNIVERSITY COOP](#)



[学務情報システム KOAN](#)



マイハンドアイMYHANDAI **APP**

連絡バス  
Inter-  
campus bus

図書館蔵書  
検索  
MyOPAC



iPhone

Android

## ニュース・災害/News・Disaster

SAFETY TIPS

**APP**



iPhone

Android

OSAKA  
SAFE TRAVELS

**APP**



iPhone

Android

NHK  
WORLD-JAPAN

**APP**



iPhone

Android

## 医療/Medical Care

[おおさかメディカルネット](#)  
for Foreigners  
[OSAKA MEDICAL NET FOR  
FOREIGNERS](#)



[多言語医療問診票](#)  
[MULTILINGUAL MEDICAL  
QUESTIONNAIRE](#)



## 生活全般/Life in General

[\(公財\)大阪府国際交流財団\(OFIX\)](#)  
[OSAKA FOUNDATION OF  
INTERNATIONAL EXCHANGE](#)



[外国人生活支援ポータルサイト](#)  
[A DAILY LIFE SUPPORT PORTAL  
FOR FOREIGNERS](#)

生活ガイド  
Living guide



## その他/Others

[外国人在留総合インフォメーションセンター](#)  
[IMMIGRATION BUREAU  
INFORMATION CENTERS](#)

在留手続きについての問い合わせ  
Inquiries regarding residence  
procedures



Japanese

English

[日本年金機構](#)  
[JAPAN PENSION SERVICE](#)



[\(独法\) 日本学生支援機構 JASSO](#)  
[JAPAN STUDENT SERVICES  
ORGANIZATION](#)



## "Campus Members" -- Museums and Art Museums

Osaka University continually strives to provide opportunities for students, faculty, and staff to experience and be exposed to primary sources of culture, art, science, and history.

As a signatory to group contracts referred to as "Campus Members," Osaka University now provides students, faculty, and staff with what, in some ways, resembles extensions of its campuses. That is, by showing your student or faculty/staff **ID card**, students, faculty, and staff are able to gain admission at "no charge" [see #4 below] to the museums and other facilities noted below. Moreover, you can return again and again!

The Kansai area is particularly rich with a wide variety of museums and gardens. Therefore, students in particular, *please make use of these opportunities to expose yourself to valuable primary sources of culture, art, science, and history!*

As of April 2018, "Campus Members" includes the following:

Art Museums	Museums	Others
<a href="#">The National Museum of Art, Osaka</a> <a href="#">The National Museum of Modern Art, Kyoto</a> <a href="#">Osaka Municipal Museum of Art</a> <a href="#">The Museum of Oriental Ceramics, Osaka</a>	Suita <a href="#">National Museum of Ethnology,</a> <a href="#">Kyoto National Museum, Kyoto</a> Nara <a href="#">Nara National Museum, Nara</a> Osaka <a href="#">Osaka Museum of History,</a>	 <a href="#">Osaka Castle Museum, Osaka</a> <a href="#">Osaka Science Museum,</a> <a href="#">The Osaka Museum of Housing and Living</a> <a href="#">The Asahi Beer Oyamazaki</a> <a href="#">Villa Museum of Art</a>

For You

Click for more

### Please note :

1. When passing through the Natural and Cultural Gardens at Expo '70 Commemorative Park (paid admission required) to access the **Museum of Ethnology**, showing your student or faculty/staff ID card will allow you to receive a ticket to pass through for free (this only applies to the ID card holder). This pass is **not** an entrance pass for the Natural and Cultural Gardens, so you may not make use of the Gardens using this pass.
2. From April 1, 2018, OU faculty and staff members may now access the Nara National Museum free of charge by showing their faculty/staff ID card.
3. On April 1, 2018, The Osaka Museum of Housing and Living was added to Campus Members.
4. **"No charge" only applies to museums' regular exhibitions**. Admission for **special exhibitions** as well as **joint exhibitions** will be discounted -- it will not be free! Please check the respective home pages for additional information regarding special and joint exhibitions.
5. The **Asahi Beer Oyamazaki Villa Museum of Art** is eligible for a 100 yen discount only.

[Leaflet](#)



share!

Campus Members

## Student Organization

### Osaka University International Students Association (OUIA)

OUIA is an organization for international students belonging to Osaka University. It was established in 2003 as a volunteer organization. With the aim of encouraging international students from various countries to interact with other international students and promote international exchange, OUIA cooperates with the Center for International Educational Exchange in organizing various events on campus.



#### Main Activity Location

- Suita Campus: IC Hall 2nd Floor

#### Main Activities

- Campus Tour
- Orientation
- OUIA Hour (introduction of the home country)
- OUIA Support Group (Facebook group)
- Sports Festival
- Various exchange events
- Facebook: <https://www.facebook.com/OUIA.OU/>
- Instagram: <https://www.instagram.com/ouisainfo/?hl=ja>

#### Inquiry

- IRIS

## OUIA(Osaka University International Students Association)

(You can also contact us via Facebook above.)

[About CIEE](#)
[Education](#)
[Research / Development](#)
[Inbound Short-Term Programs](#)
[Outbound Programs](#)
[Student Support](#)
[International Exchange](#)
[Collaboration / Contribution](#)


Center for  
 International  
 Education and  
 Exchange

Intercultural Collaboration  
 Hall, Osaka University  
 1-1 Yamada, Suita, Osaka  
 565-0871 Japan

Copyright ©  
 CIEE Osaka University.  
 All rights reserved.

B.S.P works to promote exchange between the Japanese and international students of Osaka University in cooperation with Center for International Educational Exchange, providing opportunities for students to get to know each other through events such as welcome parties, Japanese cafes, and field trips. Every student of Osaka University is welcome to participate in the event. If you are interested in international exchange and world culture, please feel free to join us. Whether you are a Japanese or an international student, you are welcome to join us!



### Activity Location

- Suita Campus: 2nd Floor of IC Hall
- Toyonaka Campus: 2nd Floor of Student Service & Union (above Cafeteria Kasane)
- Minoh Campus: 5th floor of Research and Education Hub

### Main Activities

- Campus Tour (for new international students)
- Orientation
- Various exchange events
- Language Cafes (e.g. Japanese Cafe)

### B.S.P. Official Facebook



### Each campus B.S.P.

- Suita BSP  
Instagram: [https://www.instagram.com/ou\\_bsp\\_suita/](https://www.instagram.com/ou_bsp_suita/)
- Toyonaka BSP  
Instagram: [https://www.instagram.com/ou\\_bsp\\_toyonaka/](https://www.instagram.com/ou_bsp_toyonaka/)
- Toyonaka BSP  
Twitter: <https://twitter.com/handaibsp>
- Minoh BSP  
Instagram: [https://www.instagram.com/minoh\\_bsp/](https://www.instagram.com/minoh_bsp/)

### Inquiry

- IRIS, Center for International Education and Exchange 06-6879-1234
- Toyonaka Office, Center for International Education and Exchange 06-6879-1234
- Minoh Office, Center for International Educational Exchange 06-6879-1234

\*You can contact us from our Facebook and Instagram above.



Osaka University Foreign Students Network (OUFSN) was established in order to link these associations and organizations, and our aim is to provide a better platform for international students, as well as Japanese students to communicate and collaborate through various activities

[OUFSN Introduction Brochure](#) 

[International Student Associations at OU](#) 

