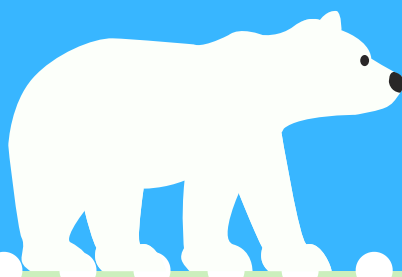


~Fall & Winter~

GUIDEBOOK 2021

Japanese Language Programs
for International Students




大阪大学国際教育交流センター

CIEE Center for
International
Education and
exchange

<http://ciee.osaka-u.ac.jp/>



Index

- ◆ 5 Japanese Language Programs by CIEE ...P2
 - ◆ Which course you may enroll ?P2
 - ◆ Course OutlineP3
 - ◆ Need help?P5
 - ◆ How to enroll ?P7
 - ◆ Each course's timetable and scheduleP9
 - ◆ About OU Multi Lingual PlazaP13
- 

◆ 5 Japanese Language Programs by CIEE

CIEE offers 5 Japanese Language Programs to international students in Osaka University.

- ① Elective Japanese Language Course
- ② Interdisciplinary Education Subjects
- ③ International Exchange Subjects JA (Japanese Language)
- ④ International Exchange Subjects JGU (Japanese Global Understanding)
- ⑤ Liberal Arts & Sciences

◆ Which course you may enroll ?

Eligible courses are different depending on your status.

Note that you may enroll in only 1 course at a time.

- Research Students → Elective Japanese Language Course No credit
- Graduate Students → Elective Japanese Language Course No credit
Interdisciplinary Education Subjects 2 credits per 1 class
International Exchange Subjects (JA) 4 credits per 1 track
International Exchange Subjects (JGU) 2 credits per 1 class
- Under Graduate Students → Liberal Arts & Sciences 2 credits per 1 class
- Special Auditors → Elective Japanese Language Course No credit
International Exchange Subjects (JA) 4 credits per 1 track
International Exchange Subjects (JGU) 2 credits per 1 class
Liberal Arts & Sciences 2 credits per 1 class
※Consult with instructors before registering
- Special Research Students → Elective Japanese Language Course No credit
- Special Students → No class※
- International Scholars and Faculty → No class ※

※No class : Please consider visiting OU Multilingual Plaza (P13)

◆Course Outline

※You may enroll in only 1 level at a time! (100~700)

Elective Japanese Language Course level 100~700

- Target: Enrollment is open to Graduate Students, Research Students, Special Research Students and Special Auditors at Osaka University.
- Teaching Style and place : Classes are held **ONLINE** using Zoom and CLE for a while.
- Classes: You can choose a class suitable to your needs (Japanese proficiency, academic aims etc). However, you can only choose one level and one track. (※Originally held at Suita)
- Credit: **No academic credit** will be given for this course.
- Please register for a class through KOAN website.
- (※Except some special auditors such as students of FrontierLab@OsakaU)
- Registration period: **Tuesday, September 28th ~ Friday, October 22nd**
- ※Graduate Students and some Special Auditors must check their own department's registration period.
- Class starts from : **Thursday, October 7th**
- Registration Cancel : **Monday, October 25th ~ Friday, November 12th**
- **Attention: Graduate students are not allowed to take Elective Course's 600 level and 700 level classes. Instead, they need to choose "Interdisciplinary Education Subjects" which provide them credits.**
- ※Except Business Japanese class.

Timetable : P9, Schedule : P10

Interdisciplinary Education Subjects (Advanced Japanese for Academic Purposes)

 **Advanced!**
level 600 • 700

- These classes are designed for Graduate Students, and will provide them with necessary skills for academic reading, writing and communication in Japanese.
- This course is for the students who pass level 600 in the Japanese Proficiency Level Check.
- Classes are held **ONLINE** using Zoom and CLE for a while. (※Originally held at Suita)
- You may receive two credits in each subjects if you attain prescribed grade per semester.
- Please register for a class through KOAN website.
- ◆ **Academic Communication (Wednesday 4th period, Class code : C50502)**
- ◆ **Academic Reading (Monday 5th period, Class code : C50506)**
- ◆ **Academic Writing (Tuesday 5th period, Class code : C50508)**
- Registration period: **Fri. September 24th 12:00 ~ Fri. October 8th 13:00**
- Class starts from: **Fri. October 1st** ※Academic Reading might start from October 11th.
- Registration Cancel: **Fri. October 15th 9:30 ~ Thu. October 21st 16:30**

Schedule : P12

International Exchange Subjects (JA) Level 100~400 (Japanese Language)

- ☐ Target: Enrollment is open to Graduate Students, Special Auditors (OUSSEP, iExpo etc) at Osaka University.
- ☐ Level : 4 levels ※From Introductory (level 100) to Upper Intermediate (level 400)
- ☐ Purpose : To provide students with necessary skills in Japanese (speaking, listening, reading and writing) comprehensively.
- ☐ Credit : You may receive 4 credits in total, only if you attain the prescribed grade.
- ☐ Time : Most classes are held in 1st period (8:50 to 10:20) .
- ☐ Lessons are held 3 times a week, and you must attend ALL classes. If there are multiple tracks, choose one of them to enroll in. (※Track2 is for OUSSEP students.)
- ☐ Teaching Style and place : Classes are held **ONLINE** using Zoom and CLE for a while.
(※Originally held at Toyonaka)
- ☐ Note that you may not enroll in other programs such as Elective Course at the same time.
- ☐ Please register for the class you take through KOAN (except some special auditors such as students of FrontierLab@OU).
- ☐ Registration period: **Fri. September 24th 12:00 ~ Fri. October 8th, 13:00**
- ☐ Class starts from: **Fri. October 1st**
- ☐ Registration Cancel: **Fri. October 15th 9:30 ~ Thu. October 21st 16:30**

Timetable : P11, Schedule : P12

International Exchange Subjects (JGU) Level 500 • 600 (Japanese Global Understanding)

- ☐ Target: Enrollment is open to Graduate Students, Special Auditors (OUSSEP, iExpo etc) at Osaka University only.
- ☐ Level : Lower Advanced (level 500) and Upper Advanced (level 600)
- ☐ Purpose : To provide students with communication and comprehension skills in Japanese language through theme-specified class activity.
- ☐ Time : Classes are held in 1st period (8:50 to 10:20) .
- ☐ Teaching Style and place : Classes are held **ONLINE** using Zoom and CLE for a while.
(※Originally held at Toyonaka)
- ☐ Credit : You may receive 2 credits per each class, only if you attain the prescribed grade.
- ☐ Note that you may not enroll in other programs such as Elective Course at the same time.
- ☐ Please register for the class you take on KOAN website.
(※Except some special auditors such as students of FrontierLab@OsakaU)
- ☐ Registration period: **Fri. September 24th 12:00 ~ Fri. October 8th, 13:00**
- ☐ Class starts from: **Fri. October 1st**
- ☐ Registration Cancel: **Fri. October 15th 9:30 ~ Thu. October 21st 16:30**

Timetable : P11, Schedule : P12

Liberal Arts & Sciences



- (1) Japanese for Advanced Communication
- (2) Japanese for Academic Purpose
- (3) Communication in Multicultural Contexts

- ☐ Enrollment is open to Undergraduate Students, Special Auditors at Osaka University.
- ☐ Level : Upper Advanced (700 level)
- ☐ Classes are held on **ONLINE** using CLE or Zoom. (Originally held at Toyonaka Campus)
- ☐ Please register for the class you take through KOAN
- ☐ Class starts from: Thursday, October 1st

Timetable : P11, Schedule : P12

◆Need Help?

If you have any question, please send
e-mail to jpstaff@ciece.osaka-u.ac.jp !
Staffs will answer you!



※Staff's office: IC Hall 3F, Suita Campus

All classes will be held **ONLINE
for a while
using CLE, Zoom, etc...!**

Details for online classes vary from class to class.

Please check KOAN's **syllabus** carefully.

Syllabus : https://KOAN.osaka-u.ac.jp/syllabus_ex/campus

【Elective course 100~300 level】

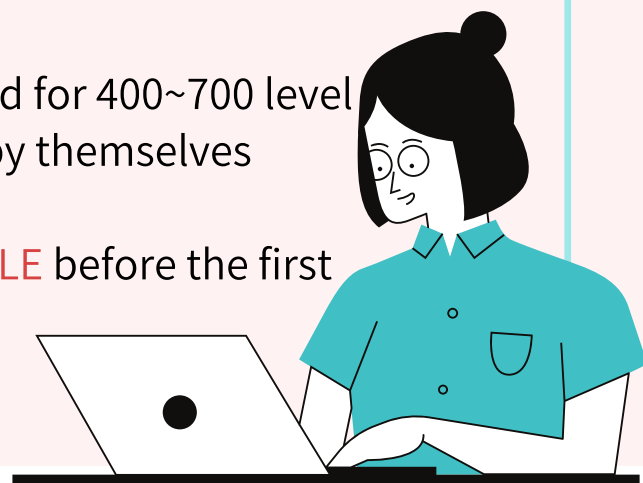
In general, students who registered for 100~300 level classes receive invitation-email from teacher about

CIEE's original SNS site "Okini" before the first class begin,
and they **get Zoom information through Okini**.

【Elective course 400~600 level】

On the other hand, students who registered for 400~700 level classes have to login to OU's CLE system by themselves (without any direction from teacher)
and they **get Zoom information through CLE** before the first class begin.

CLE : <https://www.cle.osaka-u.ac.jp/>



◆How to enroll? (simple 4 steps)

Please read the following instructions.

You can check the video guide here.

https://ciee.osaka-u.ac.jp/en/education/japanese_program_how-to-enroll/

START ① Take a Japanese Language Level check test ※If you have never learned Japanese before (Level 100), you don't need to take this test.

① Go to (http://nava.ciee.osaka-u.ac.jp/sim_levelcheck/)

② Take the test that matches your level of Japanese.

③ On the results page, enter your Name and Student Number (If you have one). Click "Print as PDF".

④ Download the PDF and submit it to teacher by CLE or e-mail in the first class.

※You need to submit it!

The screenshots show the Japanese Language Level Check Program interface. The first screenshot is the main page with the title '日本語' and 'Japanese Proficiency Level Check For CIEE Japanese Language Program'. It has a 'Guides' section and a 'Contact us' section. The second screenshot is the 'Class Level Selection' page, which asks the user to choose a level (Level 100 or Level 200) based on their proficiency. It includes a 'Take a test' button. The third screenshot is the 'Your Result - Level 200' page, which shows a table of scores for 20 tasks (Q1 to Q20) and a total score of 27. It also includes a 'Print as PDF' button. The fourth screenshot is the 'Your Result - Level 100' page, which shows a table of scores for 20 tasks (Q1 to Q20) and a total score of 27. It also includes a 'Print as PDF' button.

② Find the class that fits you best

Search for the classes according to your score from the Japanese Proficiency Level Check. You can find class syllabi here :
(https://ciee.osaka-u.ac.jp/en/education/japanese_program/)

③ Register on KOAN

Please follow the procedure below to register for the class.

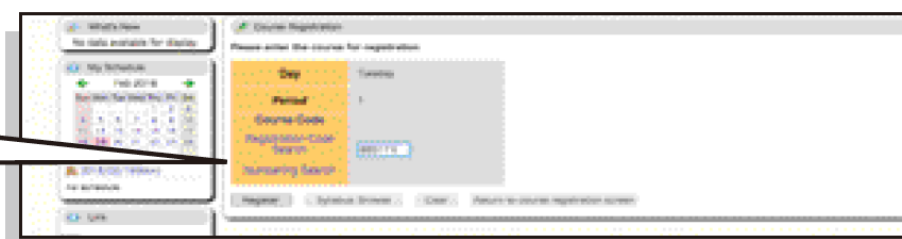
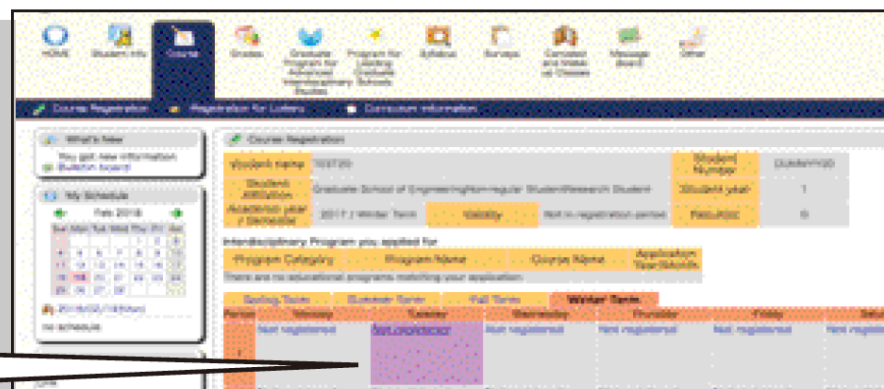


① Access KOAN and log in.

② Click the Day/Period of the class you want to take.

③ Enter the Course Code and click "Register".

④ If the class appears in the time slot, registration is complete.



※Graduate Students and some Special Auditors must check their own department's registration period.

※In case of registration error,
please contact the staffs! (jpstaff@ciee.osaka-u.ac.jp)



GOAL! ④ Attend the class

You must submit the downloaded result (PDF) of Japanese Proficiency Level Check Test to the teacher, when you attend the class first time.

◆ Elective Course (Fall and Winter) Time Table

※ Code in square ■ is required when you register the class on KOAN

※ Track1 and Track2 are same class, please choose one of them.

Level 100

	Monday	Tuesday	Wednesday	Thursday	Friday
I 8:50 ~ 10:20		88F1T1 JB100-Track1-1 Comprehensive Japanese	Track1 Twice a week		88F1T1 JB100-Track1-2 Comprehensive Japanese
II 10:30 ~ 12:00		88F1T2 JB100-Track2-1 Comprehensive Japanese	Track2		88F1T2 JB100-Track2-2 Comprehensive Japanese

Level 200

	Mon.	Tuesday	Wednesday	Thursday	Friday
I 8:50 ~ 10:20	88FK21 JK201 Kanji and Vocabulary*1	88F2T1 JB200-Track1-1 Comprehensive Japanese	88FK22 JK202 Kanji and Vocabulary*2		88F2T1 JB200-T1-2 Comprehensive Japanese
II 10:30 ~ 12:00		88F2T2 JB200-Track2-1 Comprehensive Japanese			88F2T2 JB200-T2-2 Comprehensive Japanese

※1 JK201/JK301: For students who don't use kanji in their mother language

※2 JK202/302: For students who use kanji in their mother language

Level 300

	Mon.	Tuesday	Track1	Thursday	Friday
I 8:50 ~ 10:20		88F3T1 JB300-Track1-1 Comprehensive Japanese	88FK32 JK302 Kanji and Vocabulary*2	88FK31 JK301 Kanji and Vocabulary*1	88F3T1 JB300-T1-2 Comprehensive Japanese
II 10:30 ~ 12:00		88F3T2 JB300-T2-1 Comprehensive Japanese	Track2 Twice a week		88F3T2 JB300-T2-2 Comprehensive Japanese

Level 400

	Monday	Tuesday	Wed.	Thursday	Friday
II 10:30 ~ 12:00			88FC41 JC400-Track1 Academic Communication		
III 13:30 ~ 15:00		※Same content class You cannot attend both	88FW42 JW400-Track2 Academic Writing	※Same content class You cannot attend both	
IV 15:10 ~ 16:40		88FW41 JW400-Track1 Academic Communication	88FC42 JC400-Track2 Academic Communication	※Not necessarily have to choose all class	

Level 500

	Monday	Tuesday	Wednesday	Thursday	Fri.
II 10:30 ~ 12:00			88FC51 JC500-Track1 Academic Communication		
III 13:30 ~ 15:00		※Same content class You cannot attend both	88FW52 JW500-Track2 Academic Writing	88FB50 BJ500 Business Communication in Japanese	
IV 15:10 ~ 16:40		88FW51 JW500-Track1 Academic Writing	88FC52 JC500-Track2 Academic Communication	※Not necessarily have to choose all class	

Level 600

	Monday	Tue.	Wed.	Thursday	Friday
II 10:30 ~ 12:00			88FC60 JC600 Academic Communication	←Graduate Student ✗	
III 13:30 ~ 15:00				88FC60 BJ600 Business Communication in Japanese	←Graduate Student ○
IV 15:10 ~ 16:40	88FW60 JW600 Academic Writing	←Graduate Student ✗			
V 16:50 ~ 18:20	88FR60 JR600 Academic Reading	←Graduate Student ✗			※Not necessarily have to choose all class

Level 700

	Monday	Tue.	Wed.	Thursday	Friday
II 10:30 ~ 12:00			88FC70 JC700 Academic Communication	←Graduate Student ✗	
III 13:30 ~ 15:00				88FB70 BJ700 Business Communication in Japanese	←Graduate Student ○
IV 15:10 ~ 16:40	88FW70 JW700 Academic Writing	←Graduate Student ✗			
V 16:50 ~ 18:20	88FR70 JR700 Academic Reading	←Graduate Student ✗			※Not necessarily have to choose all class

◆ Elective Course & Interdisciplinary Education Subjects

Schedule for Fall and Winter Semester

①st~⑮th : Number of times class is held

day month	Monday	Tuesday	Wednesday	Thursday	Friday
2021 October					1
	4	5	6	① 7	① 8
	① 11	① 12	① 13	② 14	② 15
	② 18	② 19	② 20	③ 21	③ 22
	③ 25	③ 26	③ 27	④ 28	④ 29
	④ 1	④ 2	No class 3	No class 4	No class 5
November	No class 8	⑤ 9	④ 10	⑤ 11	⑤ 12
	⑤ 15	⑥ 16	⑤ 17	⑥ 18	⑥ 19
	⑥ 22	No class 23	⑥ 24	⑦ 25	⑦ 26
	⑦ 29	⑦ 30			
			⑦ 1	⑧ 2	⑧ 3
December	⑧ 6	⑧ 7	⑧ 8	⑨ 9	⑨ 10
	⑨ 13	⑨ 14	⑨ 15	⑩ 16	⑩ 17
	⑩ 20	⑩ 21	⑩ 22	⑪ 23	⑪ 24
	⑪ 27	⑪ 28	⑪ 29	⑫ 30	⑫ 31
	⑫ 3	⑫ 4	⑫ 5	⑬ 6	⑬ 7
2022 January	No class 10	⑬ 11	⑬ 12	⑭ 13	No class 14
	⑬ 17	⑭ 18	⑭ 19	⑮ 20	⑮ 21
	⑭ 24	⑮ 25	⑮ 26	⑯ 27	⑯ 28
	⑮ 31				
		⑮ 1	⑮ 2	⑮ 3	⑮ 4
February	⑮ 7	⑮ 8	⑮ 9	⑮ 10	⑮ 11

Class Starts from
Thu. October 7th

Registration Period
(If you are
research student)

Tue. September 27th
~
Fri. October 22nd

※Graduate Students
and some Special
Auditors must check
their own department's
registration period.

**Confirmation of
Registration**

Wed. October 27th

**Registration
Cancel**

Mon. October 25th
~
Fri. November 12th

◆Timetable for Fall and Winter Semester

JA & JGU

&

Liberal Arts & Science

※Originally held at Toyonaka Campus

Subjects:		International Exchange Subjects (JA・JGU)				Liberal Arts and Science				
Time	Monday		Tuesday		Wednesday		Thursday		Friday	
	Class	Teacher	Class	Teacher	Class	Teacher	Class	Teacher	Class	Teacher
I 8:50 ~ 10:20 	<div>①②③ : You must attend JA classes 3 times a week</div> <div>Track2 is for OUSSEP students only</div>		① JA100 Track1/Track2 (Joint Class) Namba		② JA100 Track1 Okada		③ JA100 Track1 Kageyama	← 881229		
					JA100 Track2 Hanai		JA100 Track2 Hanai	← 881230		
					② JA100 Track3 Sumiyoshi		③ JA100 Track3 Sumiyoshi	← 881233		
			① JA200 Track1/Track2 (Joint Class) Fukura		② JA200 Track1 Uenaka		③ JA200 Track1 Yabe	← 881231		
					JA200 Track2 Handa		JA200 Track2 Handa	← 881232		
			① JA300 Track1 Sumiyoshi		② JA300 Track1/Track2 (Joint Class) Nishiguchi		③ JA300 Track1 Ueda	← 881234		
							JA300 Track2 Ueda		JA300 Track2 Okazaki	← 881235
			① JA400 Track1 Kan		② JA400 Track1 Okazaki		③ JA400 Track1/Track2 (Joint Class) Yoshinaga	← 881236		
								JA400 Track2 Yabe		JA400 Track2 Yabe
			JGU500 881282 Ohtani		JGU500 881283 Fujisawa		JGU500 881284 Ito			
			JGU600 881273 Okazaki		JGU600 881274 Ohtani		JGU600 881275 Obara			
II 10:30~ 12:00			① JA100 Track3 Namba		← 881233					
III 13:30~ 15:00										
IV 15:10~ 16:40										
V 16:50 ~ 18:20	Japanese for Academic Purpose	Yoshinaga	Japanese for Academic Purpose	Namba	Japanese for Academic Purpose	Muraoka	Japanese for Advanced Communication	Fukura		
	Communication in Multicultural Contexts	Okamoto	Communication in Multicultural Contexts	Nishimura	Communication in Multicultural Contexts	Ohtani				

◆ JA & JGU ◆ Liberal Arts & Science ◆ Interdisciplinary Education Subjects

Scedule for Fall and Winter Semester

①st~⑮th : Number of times class is held

day month	Monday	Tuesday	Wednesday	Thursday	Friday
2021 October					① 1
	① 4	① 5	① 6	① 7	② 8
	② 11	② 12	② 13	② 14	③ 15
	③ 18	③ 19	③ 20	③ 21	④ 22
	④ 25	④ 26	④ 27	④ 28	⑤ 29
November	⑤ 1	⑤ 2	No class 3	No class 4	No class 5
	No class 8	⑥ 9	⑤ 10	⑤ 11	⑥ 12
	⑥ 15	⑦ 16	⑥ 17	⑥ 18	⑦ 19
	⑦ 22	No class 23	⑦ 24	⑦ 25	⑧ 26
	⑧ 29	⑧ 30			
December			⑧ 1	⑧ 2	⑨ 3
	⑨ 6	⑨ 7	⑨ 8	⑨ 9	⑩ 10
	⑩ 13	⑩ 14	⑩ 15	⑩ 16	⑪ 17
	⑪ 20	⑪ 21	⑪ 22	⑪ 23	⑫ 24
	⑫ 27	28	29	30	31
2022年 January	3	⑫ 4	⑫ 5	⑫ 6	⑬ 7
	No class 10	⑬ 11	⑬ 12	⑬ 13	No class 14
	⑬ 17	⑭ 18	⑭ 19	⑭ 20	⑭ 21
	⑭ 24	⑮ 25	⑮ 26	⑮ 27	⑮ 28
	⑮ 31				

Class Starts from
Fri. October 1st

Registration Period
Thu. Sept. 24th 12:00
~
Fri. Oct. 8th 13:00

Registration Cancel
Fri. Oct. 15th 9:30
~
Thu. Oct. 21th 16:30

◆ Support for Japanese Language learning out of classes

OU Multilingual Plaza



OU Multilingual Plaza is a special space where Osaka University students can get support for their Japanese language learning out of classes. It is located on the 4th Floor, Cyber Media Center, Toyonaka Campus.



You can use Japanese textbooks and other learning materials there. If you have any difficulties in studying Japanese language by yourself, you can consult with Japanese Language advisers there on Tuesdays from 15:10 to 16:40 during term. (※Due to COVID-19, the advising session is currently held on Zoom. Please contact us for more information.)

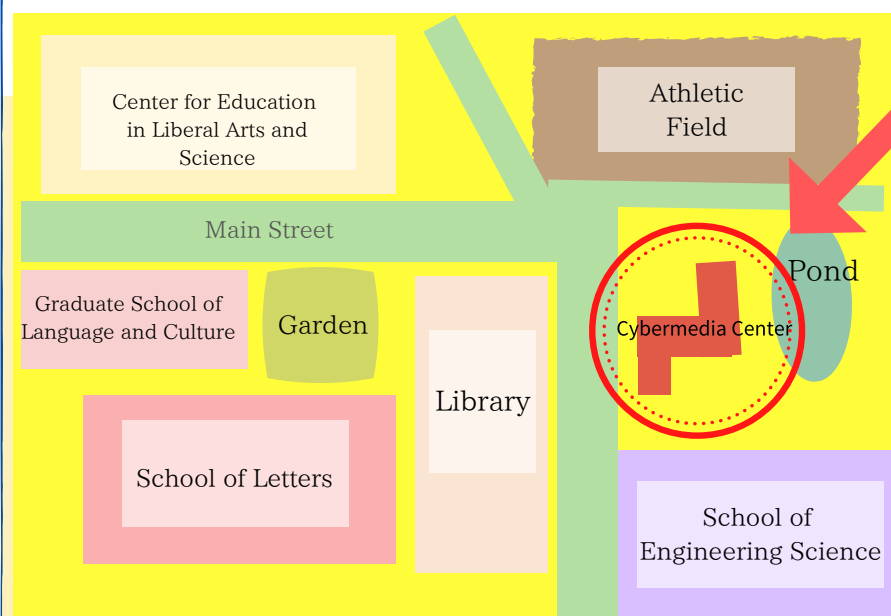
Events are also held so that students can practice communicating in Japanese in a relaxed, fun atmosphere.

For further information, please check the following website.

Website : <https://www.lang.osaka-u.ac.jp/cme/plaza/>

✉ E-mail : plaza@lang.osaka-u.ac.jp

Toyonaka Campus Map



Here

★ Japanese Language Advisers

Tuesday 15:10~16:40

※ Due to COVID-19, please make reservation by e-mail.

★ Cyber Media Center 4 F