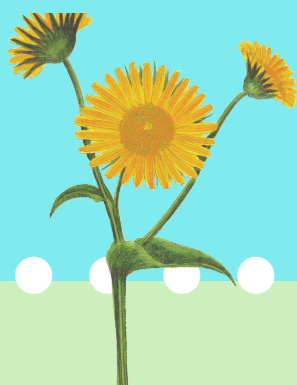


~Spring & Summer~

GUIDEBOOK 2021

Japanese Language Programs
for International Students



大阪大学国際教育交流センター

CIEE Center for
International
Education and
Exchange

<http://ciee.osaka-u.ac.jp/>



Index

- ◆ 5 Japanese Language Programs by CIEE ...P2
- ◆ Which course you may enroll in ?.....P2
- ◆ Course OutlineP3
- ◆ Need help?P5
- ◆ Detail for Online classP6
- ◆ How to enroll ?P7
- ◆ Each course's timetable and scheduleP9
- ◆ About OU Multilingual PlazaP13

◆ 5 Japanese Language Programs by CIEE

CIEE offers 5 Japanese Language Programs to international students in Osaka University.

- ① Elective Japanese Language Course
- ② Interdisciplinary Education Subjects
- ③ International Exchange Subjects JA (Japanese Language)
- ④ International Exchange Subjects JGU (Japanese Global Understanding)
- ⑤ Liberal Arts & Sciences

◆ Which course you may enroll in ?

Eligible courses are different depending on your status.

Note that you may enroll in only 1 course at a time.

- Research Students → Elective Japanese Language Course No credit
- Graduate Students → Elective Japanese Language Course No credit
Interdisciplinary Education Subjects 2 credits per 1 class
International Exchange Subjects (JA) 4 credits per 1 track
International Exchange Subjects (JGU) 2 credits per 1 class
- Under Graduate Students → Liberal Arts & Sciences 2 credits per 1 class
- Special Auditors → Elective Japanese Language Course No credit
International Exchange Subjects (JA) 4 credits per 1 track
International Exchange Subjects (JGU) 2 credits per 1 class
Liberal Arts & Sciences 2 credits per 1 class
※Consult with instructors before registering
- Special Research Students → Elective Japanese Language Course No credit
- Special Students → No class※
- International Scholars and Faculty → No class ※

※No class : Please consider visiting OU Multilingual Plaza (P13)

◆Course Outline

※You may enroll in only 1 level at a time! (100~700)

Elective Japanese Language Course level 100~700

- ☐ Target: Enrollment is open to Graduate Students, Research Students, Special Research Students and Special Auditors at Osaka University.
- ☐ Teaching Style: Classes are held on **online** using CLE or Zoom.
- ☐ Classes: You can choose a class, which is suitable to your needs (Japanese proficiency, academic aims etc). However, you can only choose one level and one track.
- ☐ Credit: No academic credit will be given for this course.
- ☐ Please register for a class through KOAN website.
(※Except some special auditors such as students of FrontierLab@OsakaU)
- ☐ Registration period: **Friday, March 26th ~ Friday, April 23rd**
※Graduate Students and some Special Auditors must check their own department's registration period.
- ☐ Class starts from : **Friday, April 9th**
- ☐ **Graduate students who pass level 600 or 700 in the Japanese Proficiency Level Check may sign up for the "Interdisciplinary Education Subjects", but NOT the Elective Japanese Language Course.**

Timetable : P9, Schedule : P10

Interdisciplinary Education Subjects (Advanced Japanese for Academic Purposes)


Advanced!
level 600

- ☐ These classes are designed for Graduate Students, and will provide them with necessary skills for academic reading, writing and communication in Japanese,
- ☐ This course is for the students who pass level 600 in the Japanese Proficiency Level Check.
- ☐ Classes are held **online**.
- ☐ You may receive two credits in each subject if you attain prescribed grade per semester.
- ☐ Please register for a class through KOAN website.
- ◆**Academic Communication (Wednesday 4th period, Class code : C50502)**
- ◆**Academic Reading (Monday 5th period, Class code : C50506)**
- ◆**Academic Writing (Tuesday 5th period, Class code : C50508)**
- ◆**Career Design and Business Communication (Thursday 4th period, Class code : C50509)**
- ☐ Registration period: **Thursday, April 8th 12:00 ~ Friday, April 16th 13:00**
- ☐ Class starts from: **Friday, April 9th**

Schedule : P10

International Exchange Subjects (JA) Level 100~400 (Japanese Language)

- ☐ Target: Enrollment is open to Graduate Students, Special Auditors (OUSSEP, iExpo etc) at Osaka University.
- ☐ Level : 4 levels ※From Introductory (level 100) to Upper Intermediate (level 400)
- ☐ Purpose : To provide students with necessary skills in Japanese (speaking, listening, reading, writing) comprehensively.
- ☐ Credit : You may receive 4 credits in total, only if you attain the prescribed grade.
- ☐ Time : Most classes are held in 1st period (8:50 to 10:20) .
- ☐ Lessons are held 3 times a week, and you must attend ALL classes.
If there are multiple tracks, choose one of them to enroll in.
- ☐ Teaching Style : Classes are held **online** using CLE or Zoom.
- ☐ Note that you may not enroll in other programs such as Elective Course at the same time.
- ☐ Please register for the class you take through KOAN (except some special auditors such as students of FrontierLab@OU).
- ☐ Registration period: **Thursday, April 8th 12:00 ~ Friday, April 16th 13:00**
- ☐ Class starts from: **Friday, April 9th**

Timetable : P11, Schedule : P12

International Exchange Subjects (JGU) (Japanese Global Understanding)

Advanced!

Level **500 • 600**

- ☐ Target: Enrollment is open to Graduate Students, Special Auditors (OUSSEP, iExpo etc) at Osaka University only.
- ☐ Level : Lower Advanced (level 500) and Upper Advanced (level 600)
- ☐ Purpose : To provide students with communication and comprehension skills in Japanese language through theme-specified class activity.
- ☐ Time : Classes are held in 1st period (8:50 to 10:20) .
- ☐ Teaching Style : Classes are held **online** on CLE or Zoom.
- ☐ You can freely choose classes, from one class to three classes per week.
- ☐ Credit : You may receive 2 credits per each class, only if you attain the prescribed grade.
- ☐ Note that you may not enroll in other programs such as Elective Course at the same time.
- ☐ Please register for the class you take on KOAN website.
(※Except some special auditors such as students of FrontierLab@OsakaU)
- ☐ Registration period: **Thursday, April 8th 12:00 ~ Friday, April 16th 13:00**
- ☐ Class starts from: **Friday, April 9th**

Timetable : P11, Schedule : P12

Liberal Arts & Sciences



- (1) Japanese for Advanced Communication
- (2) Japanese for Academic Purpose
- (3) Communication in Multicultural Contexts

- ☐ Enrollment is open to Undergraduate Students, Special Auditors at Osaka University.
- ☐ Level : Upper Advanced (700 level)
- ☐ Classes are held **online**.
- ☐ Please register for the class you take through KOAN
- ☐ Class starts from: **Friday, April 9th**

Timetable : P11, Schedule : P12

◆Need Help?

If you have any question, please send
e-mail to jpstaff@ciece.osaka-u.ac.jp !
Staffs will answer you!



※Staff's office: IC Hall 3F, Suita Campus

All classes will be held **ONLINE** using CLE, Zoom, etc...!

Details for online classes vary from class to class.

Please check KOAN's **syllabus** carefully.

Syllabus : https://KOAN.osaka-u.ac.jp/syllabus_ex/campus

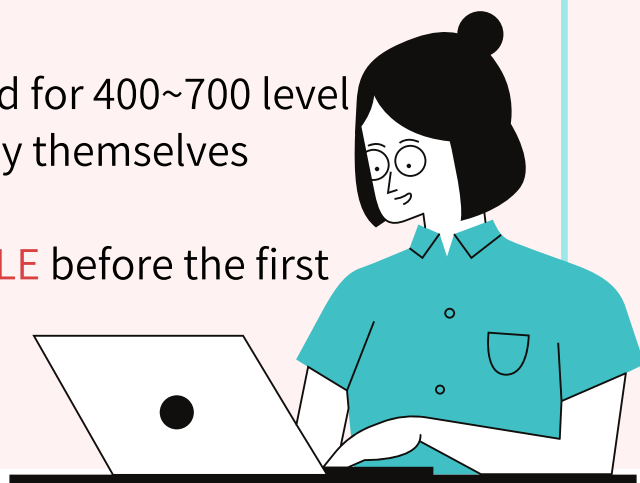
【Elective course 100~300 level】

In general, students who registered for 100~300 level classes receive invitation-email from teacher about CIEE's original SNS site "Okini" before the first class begin, and they **get Zoom information through Okini**.

【Elective course 400~600 level】

On the other hand, students who registered for 400~700 level classes have to login to OU's CLE system by themselves (without any direction from teacher) and they **get Zoom information through CLE** before the first class begin.

CLE : <https://www.cle.osaka-u.ac.jp/>



◆How to enroll? (simple 4 steps)

Please read the following instructions.

You can check video guide here.

http://ciee.osaka-u.ac.jp/japanese_program/how-to-enroll/

START ① Take a Japanese Language Level check test ※If you have never learned Japanese before (Level 100), you don't need to take this test.

① Go to (http://nava.ciee.osaka-u.ac.jp/sim_levelcheck/)

② Take the test that matches your level of Japanese.

③ On the results page, enter your Name and Student Number (If you have one). Click "Print as PDF".

④ Download the PDF and submit it to teacher by CLE or e-mail in the first class.

※You need to submit it!

The screenshots show the Japanese Language Level Check Program interface. The first screenshot is the main page with the title '日本語' and 'Japanese Proficiency Level Check For CIEE Japanese Language Program'. It has two main sections: 'Guides on' and 'Contact us'. The second screenshot is the 'Class Level Selection' page, which asks the user to choose a level (Level 100 or Level 200) based on their proficiency. It includes instructions in English and Japanese. The third screenshot is the 'Your Result - Level 100' page, showing a table of scores for 20 tasks (Q1-Q20) and a total score of 27. It also includes a 'Print as PDF' button. The fourth screenshot is the 'Your Result - Level 200' page, showing a table of scores for 20 tasks (Q1-Q20) and a total score of 27. It also includes a 'Print as PDF' button.

② Find the class that fits you best

Search for the classes according to your score from the Japanese Proficiency Level Check. You can find class syllabi here :
(http://ciee.osaka-u.ac.jp/en/japanese_program/)

③ Register on KOAN

Please follow the procedure below to register for the class.

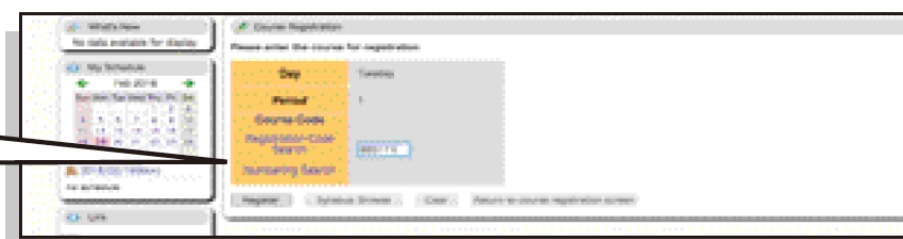
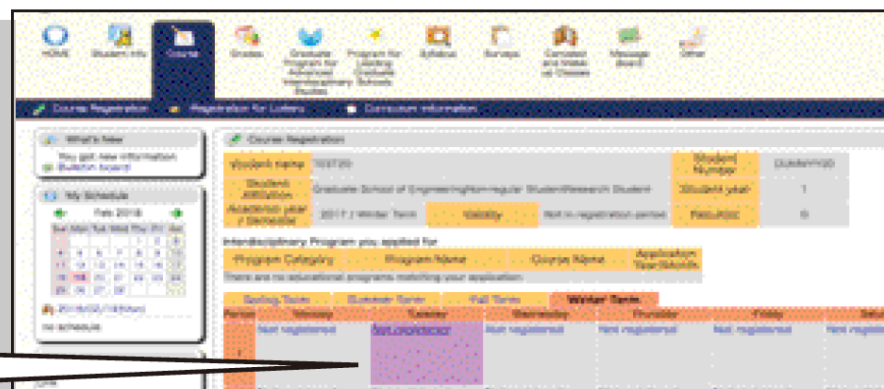


① Access KOAN and log in.

② Click the Day/Period of the class you want to take.

③ Enter the Course Code and click "Register".

④ If the class appears in the time slot, registration is complete.



※Graduate Students and some Special Auditors must check their own department's registration period.

※In case of registration error,
please contact the staffs! (jpstaff@ciee.osaka-u.ac.jp)



GOAL! ④ Attend the class

You must submit the downloaded result (PDF) of Japanese Proficiency Level Check Test to the teacher, when you attend the class first time.

◆ Elective Course (Spring & Summer) Time Table

※ Code in square ■ is required when you register the class on KOAN

※ Track1 and Track2 are same class, please choose one of them.

level 100

	Monday	Tuesday	Wednesday	Thursday	Friday
I 8:50 ~ 10:20		88S1T1 JB100-T1-1 Comprehensive Japanese	Track1		88S1T1 JB100-T1-2 Comprehensive Japanese
II 10:30 ~ 12:00		88S1T2 JB100-T2-1 Comprehensive Japanese	Twice a week Track2		88S1T2 JB100-T2-2 Comprehensive Japanese

level 200

	Monday	Tuesday	Wed.	Thur.	Friday
I 8:50 ~ 10:20	88SK21 JK201 Kanji and Vocabulary*	88S2T1 JB200-T1-1 Comprehensive Japanese	88SK22 JK202 Kanji and Vocabulary*2		88S2T1 JB200-T1-2 Comprehensive Japanese
II 10:30 ~ 12:00		88S2T2 JB200-T2-1 Comprehensive Japanese			88S2T2 JB200-T2-2 Comprehensive Japanese

※ JK201/JK301: For students who don't use kanji in their mother language

※ JK202/302: For students who use kanji in their mother language

level 300

	Mon.	Tuesday	Wed.	Thursday	Friday
I 8:50 ~ 10:20		88S3T1 JB300-T1-1 Comprehensive Japanese	88SK32 JK302 Kanji and Vocabulary*2	88SK31 JK301 Kanji and Vocabulary*1	88S3T1 JB300-T1-2 Comprehensive Japanese
II 10:30 ~ 12:00		88S3T2 JB300-T2-1 Comprehensive Japanese	Twice a week Track2		88S3T2 JB300-T2-2 Comprehensive Japanese

level 400

	Monday	Tuesday	Wednesday	Thursday	Friday
III 13:30 ~ 15:00	※Not necessarily take all class			88SC40 JC400 Academic Communication	
IV 15:10 ~ 16:40		88SW40 JW400 Academic Writing			

level 500

	Monday	Tuesday	Wednesday	Thursday	Friday
III 13:30 ~ 15:00	※Not necessarily take all class		88SB50 BJ500 Business Communication in Japanese	88SC50 JC500 Academic Communication	
IV 15:10 ~ 16:40		88SW50 JW500 Academic Writing			

level 600

	Monday	Tuesday	Wednesday	Thursday	Friday
II 10:30 ~ 12:00			88SC60 JC600 Academic Communication	88SW60 JW600 Academic Writing	
III 13:30 ~ 15:00	※Not necessarily take all class		88SB60 BJ600 Business Communication in Japanese		
IV 15:10 ~ 16:40					
V 16:50 ~ 18:20	88SR60 JR600 Academic Reading				

level 700

	Monday	Tuesday	Wednesday	Thursday	Friday
II 10:30 ~ 12:00			88SC70 JC700 Academic Communication	88SW70 JW700 Academic Writing	
III 13:30 ~ 15:00	※Not necessarily take all class		88SB70 BJ700 Business Communication		
IV 15:10 ~ 16:40					
V 16:50 ~ 18:20	88SR70 JR700 Academic Reading				

◆ Elective Course & Interdisciplinary Education Subjects

Schedule for Spring and Summer Semester

①st~⑮th : Number of times class is held

day month	Monday	Tuesday	Wednesday	Thursday	Friday
April				1	2
	5	6	7	8	① 9
	① 12	① 13	① 14	① 15	② 16
	② 19	② 20	② 21	② 22	③ 23
	③ 26	③ 27	③ 28	No class 29	NO class 30
May	No class 3	No class 4	No class 5	③ 6	④ 7
	④ 10	④ 11	④ 12	④ 13	⑤ 14
	⑤ 17	⑤ 18	⑤ 19	⑤ 20	⑥ 21
	⑥ 24	⑥ 25	⑥ 26	⑥ 27	⑦ 28
	⑦ 31				
June		⑦ 1	⑦ 2	⑦ 3	⑧ 4
	⑧ 7	⑧ 8	⑧ 9	⑧ 10	⑨ 11
	⑨ 14	⑨ 15	⑨ 16	⑨ 17	⑩ 18
	⑩ 21	⑩ 22	⑩ 23	⑩ 24	⑪ 25
	⑪ 28	⑪ 29	⑪ 30		
July				⑪ 1	⑫ 2
	⑫ 5	⑫ 6	⑫ 7	⑫ 8	⑬ 9
	⑬ 12	⑬ 13	⑬ 14	⑬ 15	⑭ 16
	⑭ 19	⑭ 20	⑭ 21	No class 22	No class 23
	⑮ 26	⑮ 27	⑮ 28	⑭ 29	⑮ 30
August	2	3	4	⑮ 5	6

Class Starts from
Fri. April 9th

Registration Period
(If you are a
research student)

Friday, March 26th

~

Friday, April 23rd

※Graduate Students
and some Special
Auditors must check
their own department's
registration period.


Confirmation of
Registration
Wed. April 28th

◆ Timetable for Spring and Summer Semester

JA & JGU

&

Liberal Arts & Science

Subject : JA											
Liberal Arts & Science											
Time	Monday		Tuesday			Wednesday			Thursday		
	Class	Lecturer	Class	Lecturer	Instructor	Class	Lecturer	Instructor	Class	Lecturer	Instructor
I 8:50 ~ 10:20 			JA100 T1/T2	Japanese Language	NAMBA	JA100 T1	Japanese Language	OKADA	JA100 T1	Japanese Language	KAGEYAMA
			JA200 T1/T2	Japanese Language	FUKURA	JA100 T2	Japanese Language	HANAI	JA100 T2	Japanese Language	HANAI
			JA300 T1	Japanese Language	SUMI YOSHI	JA200 T1	Japanese Language	UENAKA	JA200 T1	Japanese Language	YABE
			JA300 T2	Japanese Language	OKAZAKI	JA200 T2	Japanese Language	HANDA	JA200 T2	Japanese Language	HANDA
			JA400 T1	Japanese Language	KAN	JA300 T1/T2	Japanese Language	NISHI GUCHI	JA300 T1	Japanese Language	UEDA
			JA400 T2	Japanese Language	YABE	JA400 T1	Japanese Language	OKAZAKI	JA300 T2	Japanese Language	OKAZAKI
			JGU500	Seminar in Japanes and Global Understanding	FUJI SAWA	JA400 T2	Japanese Language	OBARA	JA400 T1/T2	Japanese Language	YOSHI NAGA
			JGU600	Seminar in Japanes and Global Understanding	OHTANI	JGU500	Seminar in Japanese and Global Understanding	OHTANI	JGU500	Seminar in Japanese and Global Understanding	HAN
						JGU600	Seminar in Japanese and Global Understanding	YABE	JGU600	Seminar in Japanese and Global Understanding	ITO
II 10:30 ~ 12:00						Communication in Multicultural Contexts		ARIKAWA			
III 13:30 ~ 15:00											
IV 15:10 ~ 16:40											
V 16:50 ~ 18:20	Japanese for Academic Purpose	YOSHINAGA	Japanese for Advanced Communication		NAMBA	Japanese for Academic Purpose		NAMBA	Japanese for Advanced Communication		FUKURA
	Communication in Multicultural Contexts	OKAMOTO	Communication in Multicultural Contexts		NISHIMURA	Communication in Multicultural Contexts		OHTANI			

◆Schedule for Spring and Summer Semester

JA & JGU

&

Liberal Arts & Science

①st~⑮th : Number of times class is held

day month	Monday	Tuesday	Wednesday	Thursday	Friday
April				1	2
	5	6	7	8	① 9
	① 12	① 13	① 14	① 15	② 16
	② 19	② 20	② 21	② 22	③ 23
	③ 26	③ 27	③ 28	No class 29	No class 30
May	No class 3	No class 4	No class 5	③ 6	④ 7
	④ 10	④ 11	④ 12	④ 13	⑤ 14
	⑤ 17	⑤ 18	⑤ 19	⑤ 20	⑥ 21
	⑥ 24	⑥ 25	⑥ 26	⑥ 27	⑦ 28
	⑦ 31				
June		⑦ 1	⑦ 2	⑦ 3	⑧ 4
	⑧ 7	⑧ 8	⑧ 9	⑧ 10	⑨ 11
	⑨ 14	⑨ 15	⑨ 16	⑨ 17	⑩ 18
	⑩ 21	⑩ 22	⑩ 23	⑩ 24	⑪ 25
	⑪ 28	⑪ 29	⑪ 30		
July				⑪ 1	⑫ 2
	⑫ 5	⑫ 6	⑫ 7	⑫ 8	⑬ 9
	⑬ 12	⑬ 13	⑬ 14	⑬ 15	⑭ 16
	⑭ 19	⑭ 20	⑭ 21	No class 22	No class 23
	⑮ 26	⑮ 27	⑮ 28	⑭ 29	⑮ 30
August				⑮ 5	
	2	3	4	5	6

Class Starts from
Fri. April 9th

Registration Period

Thu. April 8th 12:00
~
Fri. April 16th 13:00

◆ Support for Japanese Language learning out of classes

OU Multilingual Plaza



OU Multilingual Plaza is a special space where Osaka University students can get support for their Japanese language learning out of classes. It is located on the 4th Floor, Cyber Media Center, Toyonaka Campus.



You can use Japanese textbooks and other learning materials there. If you have any difficulties in studying Japanese language by yourself, you can consult with Japanese Language advisers there on Tuesdays from 15:10 to 16:40 during term. (※Due to COVID- 19, the advising session is currently held on Zoom. Please contact us for more information.)

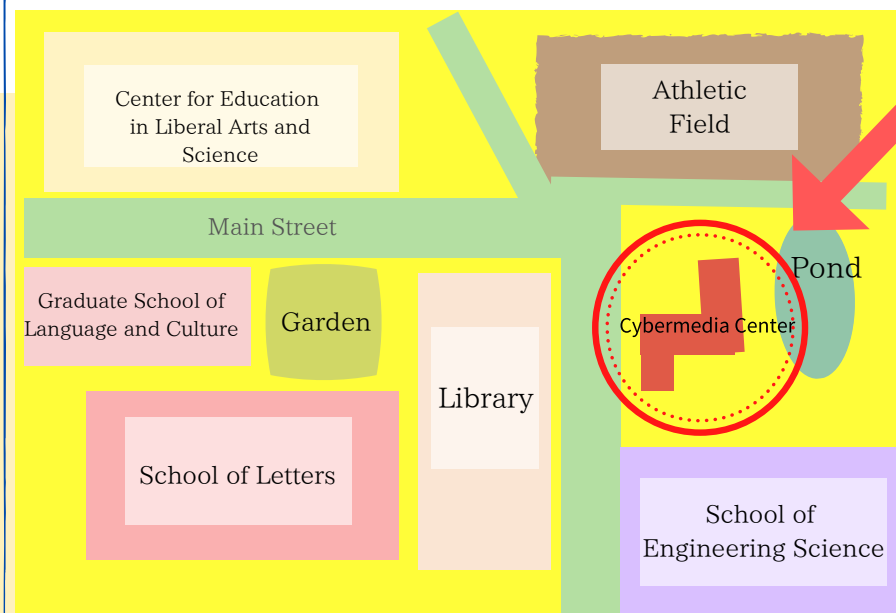
Events are also held so that students can practice communicating in Japanese in a relaxed, fun atmosphere.

For further information, please check the following website.

Website : <https://www.lang.osaka-u.ac.jp/cme/plaza/>

✉ E-mail : plaza@lang.osaka-u.ac.jp

Toyonaka Campus Map



Here

★ Japanese Language Advisers

Tuesday 15:10~16:40

※ Due to COVID-19, please make reservation by e-mail.

★ Cyber Media Center 4 F