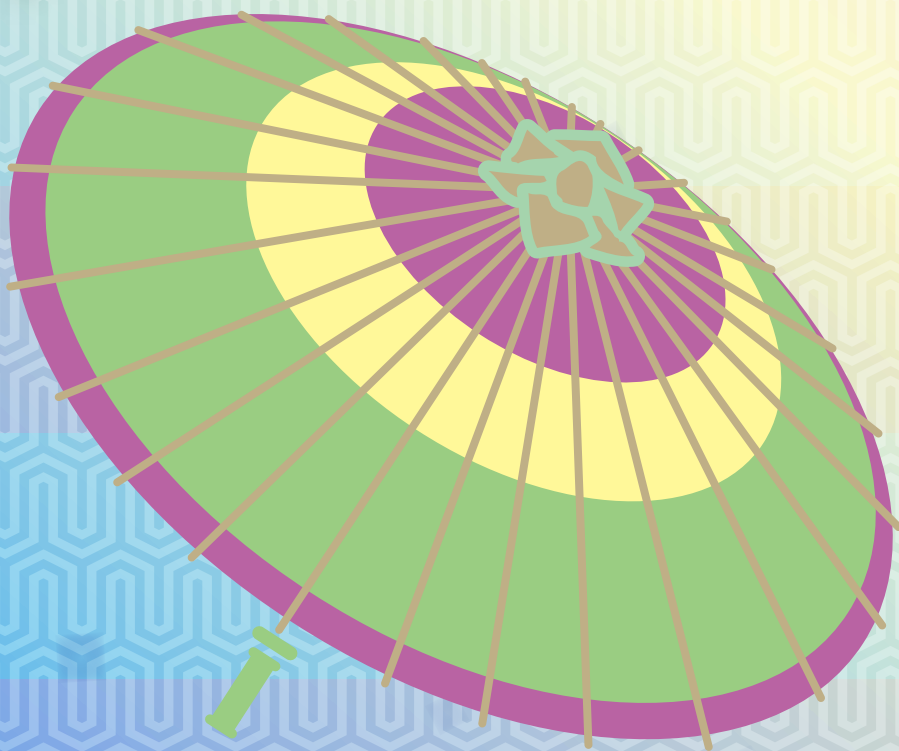




OUSSEP CALENDAR

2013-2014

**OSAKA UNIVERSITY SHORT-TERM
STUDENT EXCHANGE PROGRAM**



CONTENTS

1. What is OUSSEP ?

OUSSEP: Full-/Half-year Programs, and Optional Programs

OUSSEP-R (OUSSEP with Research Option)

OUSSEP-J (OUSSEP with Japanese Option)

FrontierLab@OsakaU, Maple and Regular Short-Term Exchange Programs

Profile of Osaka University

Global 30 Project

2. OUSSEP Records

3. Coordination and Administration

Coordination and Administration

4. Who is eligible for OUSSEP ?

Academic Exchange Agreement

Academic Calendar

English Requirements

Recommendations by Home Institutions

5. What will I study in OUSSEP ?

Structure of the Program

Completion of the OUSSEP Programs

International Exchange Activities

Field Trips

6. How do I apply to OUSSEP ?

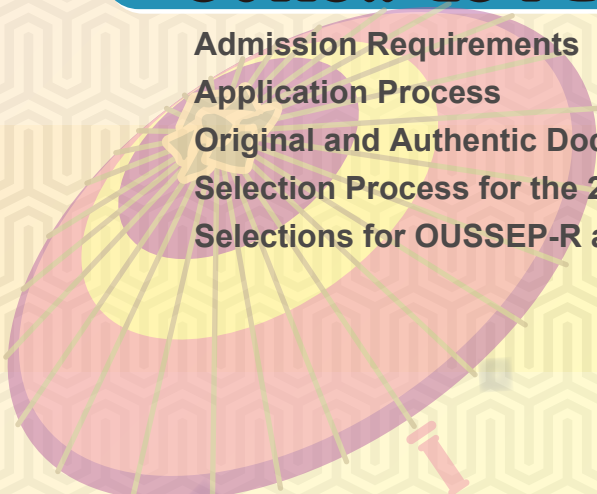
Admission Requirements

Application Process

Original and Authentic Documents/Signatures

Selection Process for the 2013 Fall Enrollment

Selections for OUSSEP-R and OUSSEP-J





7. How do I apply for Financial Aid ?

JASSO Short-Term Student Exchange Promotion Program (Inbound) Scholarship
Tuition Waiver
GPA Requirement for JASSO Applicants

8. How do I obtain a Student Visa ?

Ryugaku (Student) Visa
Avian Influenza (Bird Flu) / New Strains of Influenza
OUSSEP Home Page

9. Life in Osaka

Housing
Health and Liability Insurance
GCN-Osaka (Global Campus Net Osaka)

10. Campus Map

Toyonaka Campus
Suita Campus
Minoh Campus
Transportation from the City of OSAKA to the Campuses

11. Course Outline

Fall Semester 2013: Full-year OUSSEP, Half-year OUSSEP
Spring Semester 2014: Full-year OUSSEP, Half-year OUSSEP
Time Table-Fall Semester (2013)
Time Table-Spring Semester (2014)

12. Students' Quotes

Students' Comments

Year at OUSSEP

13. Terminologies



1. What is OUSSEP ?

The Osaka University Short-Term Student Exchange Program (**OUSSEP**) was launched in the 1996-97 academic year at Osaka University as an English speaking exchange program for those who have difficulties earning credits in Japanese. In this **OUSSEP** scheme, the participants have been offered special academic lectures taught in English under the close coordination of the Center for International Education and Exchange (hereafter referred to as the CIEE).

The University grants credits to the students who attend **OUSSEP**, for the courses they take at Osaka University, and presents a certificate of completion to the students who successfully meet the program requirements. The credits can be transferred to the student's home university according to the provisions included in the pertinent inter-institutional exchange agreement.

The Osaka University English speaking program will admit more than forty students who opt to study a variety of subjects such as medical sciences, natural sciences, engineering sciences, social sciences, arts and foreign studies. Students who participate in these programs will likely attend the same classes, join several extracurricular activities together and develop very close friendships amongst themselves. Needless to say, they will also make friends with Japanese students. Students are expected to earn at least 14 credits in each semester (28 credits annually), from lectures in English, and Japanese language classes, then transfer the credits to their home institutions.

OUSSEP: Full- / Half-year Programs, and Optional Programs

Students who enroll in **OUSSEP** are from a variety of countries around the world and study in a unique international environment. They come with different cultural backgrounds and various academic majors. Students have a choice of participating in the program for two semesters (Full-year **OUSSEP**) or one semester only (Half-year **OUSSEP**). Although the regular **OUSSEP** semester starts at the end of September, if necessary, **OUSSEP** accepts a certain number of the enrollments in April. In so doing, this allows participants the flexibility of choosing the best duration and period for their studies at Osaka.

In addition to the above, in the 2013-14 program, Osaka University is endeavoring to enhance the program with two newly introduced options, these being, '**OUSSEP** with Research Option (**OUSSEP-R**)' and '**OUSSEP** with Japanese Option (**OUSSEP-J**)'. Both focus upon the subjects which have been highly sought after by **OUSSEP** participants in previous years.

OUSSEP-R (OUSSEP with Research Option)

In the previous years, **OUSSEP** participants may (or may not) have taken elective independent study subjects, which are proposal based research / study options open to all **OUSSEP** participants, in so much as the students clarified their own research topics and study plans at the time of application. Under the subject title of the independent study, students may enjoy semi-tailor-made project works. Independent study takers, in doing so, work on their own subjects under the close supervision of Osaka University professors in English. According to our experience, these independent study credits are the most transferable **OUSSEP** credits for students' home institutions, besides Japanese language credits.

In order to offer more extensive and substantial project based learning experiences, Osaka University has decided to introduce the **OUSSEP-R** option, in which the independent study is a compulsory (2-4 credits) study unit during one's **OUSSEP** period. Consequently, those who apply for **Conventional**

◆◆◆ What is OUSSEP ? ◆◆◆

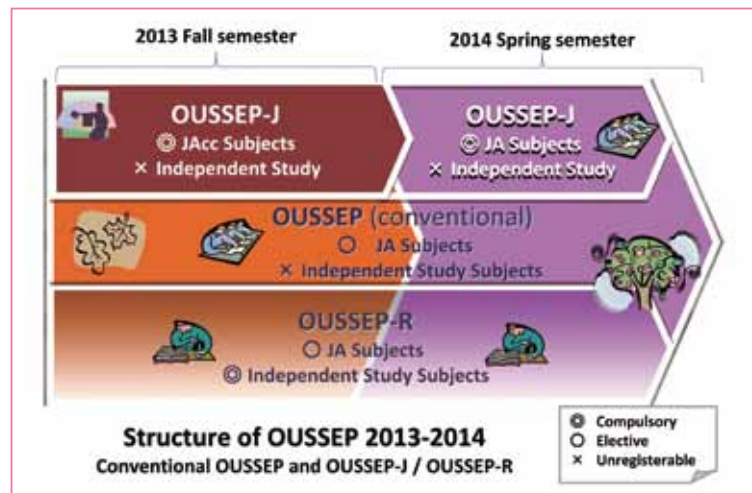
OUSSEP need not fill out the independent study proposal, nor can they take the elective independent study option. Those who wish to take independent study, therefore, should apply for the **OUSSEP-R** at the time of application. Osaka University no longer offers elective independent study subjects for **OUSSEP** students except those who enroll in **OUSSEP-R**. In order to complete **OUSSEP-R**, students should earn at least 14 credits per semester including 2-4 independent study credits.

OUSSEP-J (OUSSEP with Japanese Option)

The original **OUSSEP** is an English speaking program which caters to students with a variety of backgrounds. Although students may take elective Japanese classes, three classes per week, the program is not suitable for those who wish to study Japanese intensively, such as more than four classes per week. In the 2013 Fall semester, therefore, we will offer a new option for **OUSSEP** students, who wish to start studying Japanese at Osaka University, and would like to study Japanese quite intensively. **OUSSEP-J** is a program, which includes an optional intensive Japanese unit (JAcc; Japanese Accelerated class) within the **OUSSEP** structure. The **OUSSEP-J** students shall take 135 compulsory intensive classes in the Fall semester, instead of the 45 elective classes for **Conventional OUSSEP** or **OUSSEP-R** (JA; Japanese class). In the Fall semester, **OUSSEP-J** students take an intensive Japanese class as well as international exchange subjects. In the Spring semester, **OUSSEP-J** students take international exchange subjects with other **Conventional OUSSEP** students, including 45 classes of JA option. **The JAcc option is not available in the Spring semester.**

In order to enroll as one of the **OUSSEP-J** students, the following conditions apply:

- (1) We only accept Japanese option students without the research option. In other words, **OUSSEP** students cannot take **OUSSEP-J** and **OUSSEP-R** options concurrently.
- (2) We accept **OUSSEP-J** students for the Fall semester enrollment only. We cannot offer the JAcc intensive Japanese unit in our Spring semester.
- (3) In order to take the intensive JAcc unit, the **OUSSEP-J** participants need to pay an estimated 172,800 JPY program fee. The JAcc unit of **OUSSEP-J** is excluded from the tuition fee waiver agreements.
- (4) Due to some constraints, Osaka University cannot offer accredited university credits to JAcc subjects earned by **OUSSEP-J** students. Instead, we offer a detailed syllabus and an 'OUSSEP-J certificate' which specifies student workloads and progress. It can be accepted as the equivalent of 12 Osaka University Japanese language credits at home institutions.
- (5) In the Fall semester, **OUSSEP-J** students take JAcc classes at our Minoh campus. In addition to this, **OUSSEP-J** learners are obliged to take at least one class (2 credits) from the International Exchange Subjects. **OUSSEP** classes are taught in English.
- (6) **Conventional OUSSEP** or **OUSSEP-R** participants will not be able to take the JAcc Japanese language unit.



◆◆◆ What is OUSSEP ? ◆◆◆

FrontierLab@OsakaU, Maple and Regular Short-Term Exchange Programs

In addition to the **OUSSEP** programs, such as **Conventional OUSSEP**, **OUSSEP-R** and **OUSSEP-J**, there are other types of short-term (i.e. less than one academic year) exchange opportunities at Osaka University.

◇ **FrontierLab@OsakaU**

FrontierLab@OsakaU is a specially designed exchange program, which offers laboratory experiences for science/engineering major students. Participants may join the laboratory activities, according to their research interests as one of the team members, and then concentrate on their subjects under the supervision of Osaka University professors. Detailed information can be found at the following URL:

<http://www.osaka-u.ac.jp/jp/international/iab/e/FrontierLab.html>

◇ **Maple**

At Osaka University of Foreign Studies (hereafter referred to as OUFS), a specially designed international exchange program for Japanese learners, known as the **Maple** program, was launched in the 1999-2000 academic year, and has been popular amongst non-Japanese students who wished to study the Japanese language and culture.

This program has now been reorganized and is known as **Maple** and is administrated by the new Osaka University's Center for Japanese Language and Culture (hereafter referred to as CJLC). For more details of the Maple program, see the URL below.

<http://www.cjlc.osaka-u.ac.jp/index.html>

◇ **Regular Short-term Exchange Program**

In the **Regular Class Course**, overseas students enroll as a special auditor in regular courses taught in Japanese in one of the schools or the graduate schools of the University. In the **Regular Research Course**, students usually enroll as special research students in one of the graduate schools of the University. Students who are interested in the regular short-term exchange programs should follow the admission procedures explained below.

In the case of student exchange under **Inter-University Exchange Agreements**, an Osaka University Inter-University Exchange Application Package must be obtained by the student at the international exchange office of the student's home institution. The International Student Affairs Division of Osaka University deals with the admission of exchange students, in cooperation with its counterparts in partner institutions. In the case of exchange under **Inter-Faculty Exchange Agreements**, contact should be made through the relevant office of the faculty of the student's home institution and the individual school or graduate school of Osaka University. Useful information may be found at the following web site.

<http://www.osaka-u.ac.jp/eng/index.html>



Toyonaka Library

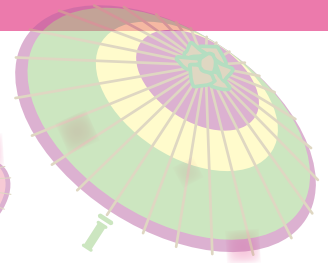


Suita Gymnasium



Graduate School of Information
Science and Technology
(Suita)

◆◆◆ What is OUSSEP ? ◆◆◆



Profile of Osaka University

Osaka University's historical roots originated from a Liberal Arts College for Osaka merchants in the eighteenth century (1724) and School of Dutch Studies in the nineteenth century (1838). Osaka University was officially founded in 1931 by the Japanese Government with strong support from local governments in the Osaka area. It was established with the aim of creating a center of higher education inheriting the liberal and progressive academic tradition of the Osaka area that had been the center of trade for the nation for many centuries.

In April of 2004, it became one of 84 National University Incorporations founded under the National University Law that resulted from the recent national university reform plan in Japan. OU was divided into two main campuses, Toyonaka and Suita. At Toyonaka, there are the School of Science, Engineering Science, Letters, Law, Economics and several Graduate Schools. The Institute of Higher Education and Practice and other research institutions are also located on the Toyonaka campus. At Suita, there are the Schools of Medicine, Dentistry, Pharmaceutical Science, Engineering, Human Science and several Graduate Schools. The University's Main Administration Office and many research and educational institutions, including the Center for International Education and Exchange (CIEE) are also located on the Suita campus.



School of Engineering
(Suita)



Ginkgo Hall
(Suita)



Osaka University Hall
(Toyonaka)

1724	Establishment of the Kaitokudo (懷徳堂) (School of General Education)
1838	Establishment of the Tekijuku (適塾) (School of Dutch Studies in the Edo Period)
1869	Establishment of the hospital supervised by the Ministry of Education (Presently, MEXT)
1880	Establishment of the Osaka Prefecture Medical School and the Osaka Prefecture Hospital
1896	Establishment of the Osaka Industrial School
1915	Establishment of the Osaka Prefecture University Hospital
1931	Establishment of the Osaka Imperial University
1949	Establishment of the Osaka University (new system)
2004	Becoming “National University Corporation” (Semi-Privatization)
2007	Merger with Osaka University of Foreign Studies
2011	80 th Anniversary (287 th since Kaitokudo)



◆◆◆ What is OUSSEP ? ◆◆◆

OUFS was first established in December 1921 in downtown Osaka, Uehonmachi, and was committed to international peace and friendship. Financially it was helped by a large donation from Choko Hayashi, an Osaka business woman. Having survived the Second World War, it moved to the city of Takatsuki, a northern suburb of Osaka, and then back to Uehonmachi. In 1979, it moved again to a new location in Minoh City for more extensive academic activities. On October 1, 2007, OUFS became a part of Osaka University as the School of Foreign Studies and some other institutions, such as the Center for Japanese Language and Culture (CJLC). OUFS's Minoh campus became Osaka University's third main campus, the Minoh campus, where the School of Foreign Studies and CJLC are located. Osaka University is now (as of January, 2013) comprised of eleven undergraduate schools, sixteen graduate schools, the Center for Education in Liberal Arts and Sciences, five research institutes, nineteen education and research centers (including CIEE and CJLC), three nation-wide joint-use facilities, four main libraries and two hospitals attached to the Faculty of Medicine and the School of Dentistry. Furthermore, the University maintains a downtown extension, the Nakanoshima Center, and four overseas offices: in the US (San Francisco), in the Netherlands (Groningen) in Thailand (Bangkok) and in China (Shanghai). More information about Osaka University may be found at the following web site:

<http://www.osaka-u.ac.jp>



School of Foreign Studies
(Minoh)



Groningen Center



San Francisco Center

Global 30 Project

Japan formulated the 300,000 International Students Plan in July of 2008, with the aim of receiving 300,000 international students by 2020. The “Global 30” Project for Establishing Core Universities for Internationalization is being implemented to realize this goal by selecting measures for the internationalization of universities including the recruitment of international students, along with forming Japan’s centers of internationalization. In 2009, thirteen universities, including Osaka University, were selected as core institutions. These core universities are expected to play a major role in dramatically boosting the number of international students educated in Japan. Under the auspices of this project, **OUSSEP** is one of the exchange programs at Osaka University, part of which participants are financially supported by the Japan Student Support Organization (JASSO).



2. OUSSEP Records

Breakdown of Enrollment into OUSSEP

Year of Enrollment	1996	1997	1998	1999	2000	2001	2002	2003	2004	2005	2006	2007	2008	2009	2010	2011	2012	Cum.
Home Universities	6	11	15	19	22	24	23	27	29	22	31	27	27	31	35	41	39	93*
Countries of Home Universities	5	9	11	15	14	16	14	15	15	16	19	17	19	20	21	21	20	28
Total	22	22	26	28	27	28	33	33	33	25	37	38	39	45	56	62	75	629
Number of Students by Region of Home Universities		(1)	(2)	(2)	(2)	(2)	(3)	(3)	(3)	(2)	[27]	(4)	(2)	(4)	(5)	(2)	(4)	[254]
North America	13	9	9	7	6	8	9	6	7[1]	5[1]	7	12	8	6	7	11	12	142
Latin America	0	0	0	0	0	0	0	0	0	0	0	0	2	2	2	3	3	12
Asia / Oceania	9	9	9	10	11	9	11	14	12	10	15	13	18	25	28	38	34	275
Europe	0	(1)	(1)	(2)	(2)[1]	(2)	(3)[1]	(3)	(3)[1]	(2)[3]								
Male / Female	12/10	11/11	7/19	9/19	14/13	14/14	15/18	16/17	18/15	11/14	20/17	21/17	18/21	23/22	27/29	18/44	35/40	311/318
Students' Major :																		
Humanities & Social Sciences / Natural Sciences & Engineering	12/10	12/10	13/13	11/17	13/14	10/18	17/16	17/16	17/16	12/13	22/15	16/22	21/18	31/14	43/13	25/37	57/18	363/266

The number of students refers to those who studied at Osaka in October of the corresponding year.

() refers to enrollment from April until March of the following year

[] Students attending OUSSEP without receiving the JASSO Scholarship (OU Scholarship, JENESYS, or IAJ Scholarship from the 2010 period)

* See the following page: '93 UNIVERSITIES which sent their student(s) to OUSSEP between 1996-2012'

◆◆◆ OUSSEP Records ◆◆◆

93 UNIVERSITIES which sent their student(s) to OUSSEP between 1996-2012

Australia(4): Australian National University, Monash University, The University of Adelaide, The University of Melbourne/ **Belgium(2):** Katholieke Universiteit Leuven, Universite Catholique de Louvain/ **Brazil(1):** Rio de Janeiro State University/ **Canada(3):** McGill University, McMaster University, University of British Columbia/ **China(9):** Beijing Normal University, East China University of Politics and Law, Nanjing University, Shenzhen University, Tongji University, Tsinghua University, Wuhan University, Xi'an Jiaotong University, Zhejiang University/ **Denmark(1):** University of Copenhagen/ **Finland(1):** Abo Akademi University/ **France(9):** Consortium of Universities in Strasbourg, Institut National Polytechnique de Grenoble, Joseph Fourier University, Louis Pastuer University, MarcBloch University, Robert Schuman University, Strasbourg University, University of Grenoble, University of Stendhal Grenoble/ **Germany(7):** Bielefeld University, Heidelberg University, Ludwig Maximilians University Munich, Oldenburg University, Ruhr University Bochum, RWTH Aachen University, Technical University of Munich/ **Hong Kong(2):** The Chinese University of Hong Kong, The Hong Kong University of Science and Technology/ **Hungary(1):** Budapest University of Technology and Economics/ **Indonesia(2):** Gadjad Mada University, Institut Teknologi Bandung/ **Italy(1):** University of Padova/ **Korea(9):** Chonnam National University, Chungnam National University, Dong-A University, Gyeongsang National University, Kyunghee University, Pusan National University, Seoul National University, Yeungnam University, Yonsei University/ **Mexico(1):** Universidad Nacional Autonoma de Mexico/ **Mongolia(1):** National University of Mongolia/ **Netherlands(3):** Delft University of Technology, Eindhoven University of Technology, University of Groningen/ **Peru(1):** La Pontificia Universidad Catolica del Peru/ **Philippines(2):** De La Salle University, University of Philippines/ **Poland(1):** Technical University of Lodz/ **Russia(3):** FarEastern State University, Saint Petersburg State University, Ural State University/ **Spain(1):** Autonomous University of Madrid/ **Sweden(4):** Rinneaus University, Royal Institute of Technology, The University of Gothenburg, Vaxio University/ **Taiwan(4):** National Cheng Kung University, National Chiao Tung University, National Taiwan University, National Tsing Hua University/ **Thailand(7):** Chiang Mai University, Chulalongkorn University, Khon Kaen University, King Mongkut's University of Technology Thonburi, Mahidol University, ThaiNichi Institute of Technology, Thammasat University/ **U.K.(3):** University of Durham, University of London, University of Nottingham/ **U.S.A.(7):** Nazareth College, Purdue University, Texas A & M University, University of California, University of Georgia, University of Washington, Wesleyan College/ **Vietnam(3):** Hongbang University International, Hue University, Nong Lam University/

3. Coordination and Administration



Coordination and Administration

Students who attend the **OUSSEP** program must be enrolled in one of the undergraduate* or graduate schools** of Osaka University as a Special Auditor***. The International Affairs Committee, which is made up of faculty members representing a variety of the University's institutions, is responsible for the management of **OUSSEP**. The Center for International Education and Exchange (CIEE) is in charge of coordinating the program and takes care of the students in collaboration with the institutions. Faculty members, who belong to the CIEE, are appointed as the **OUSSEP** and international exchange coordinators.

***A "Special Auditor" refers to an exchange student who attends classes and is graded on course work, exams, etc., but does not pursue a degree at Osaka University.

	Undergraduate schools*	Graduate schools**
Dentistry		
Economics	X	X
Engineering	X	X
Engineering Science	X	X
Foreign Studies	X	
Frontier Biosciences		X
Human Sciences	X	X
Information Science and Technology		X
International Public Policy		X
Language and Culture		X
Law	X	
Law (Law School)		
Law and Politics		X
Letters	X	X
Medicine	X	X
Pharmaceutical Sciences		
Science	X	X

X indicates an institution in which a student may be enrolled



IT Orientation



Library Orientation



◆◆◆ Coordination and Administration ◆◆◆

Since the foundation of the original **OUSSEP** program in 1996, the University has offered a series of lecture courses (2 credits each) in English, taught by academic staff from various faculties of the University. Titles and a brief description of the courses to be given in the Fall semester of 2013 and the Spring semester of 2014 are listed on pages 31-34.

Osaka University has officially designated these courses as International Exchange Subjects. They are designed for **OUSSEP** program participants and are taught in English. Enrolment in the courses is open to both international students and domestic students to allow for all of them to study in a truly international environment.

Students may select their classes according to their major and interests, (the academic level of lectures is mainly geared towards 3rd year undergraduate students) however, students are also encouraged to take courses outside their own major. This will help them to broaden their perspectives and at the same time gain a deeper understanding of Japanese society and culture. The courses cover a wide variety of subjects from **culture** to **science** and **technology**. The students, both domestic and international, will also learn about **Osaka** and **Japan**. We believe this will help students to understand the world and the importance of international awareness and mutual respect. This program underscores the motto of Osaka University: (Live Locally, Grow Globally)

Due to the fact that we can offer only a limited number of courses taught in English, but also try to satisfy students of different majors and from different universities in different countries, the courses often cannot help but be broad in scope. Truly specialized studies are also possible by taking the **Independent Study Course** with respect to the **OUSSEP-R** participants. What is more, two credits from the regular courses can be included towards the requirement of 14 credits per semester for the completion of **OUSSEP**.



Accommodation in Hiroshima



Accommodation in Hiroshima



Miyajima

4. Who is eligible for OUSSEP ?

Academic Exchange Agreement

The **OUSSEP** program is a purposefully designed exchange program for junior or senior (3rd or 4th year) students from abroad who have completed at least two years of undergraduate studies at their home institution and who are interested in studying at Osaka University. Students majoring in any field of study are welcome to participate in the **OUSSEP** program. As courses are taught in English, **OUSSEP** students need not be fluent in Japanese including those in **OUSSEP-R** and **OUSSEP-J**.

OUSSEP is open to students from institutions that have concluded an **Inter-University (or Inter-Faculty) Student Exchange Agreement with Osaka University**.^{*} Students are expected to register as full-time students, to pay the appropriate tuition fees at their home institutions and to return there, after finishing the **OUSSEP** program, in order to complete their own academic studies.

^{*} **OUSSEP** is strictly a University student exchange program and does not accept students from other institutions.

Osaka University has concluded Inter-University or Inter-Faculty Academic Exchange Agreements that include provisions for a mutual tuition waiver and credit transfer with more than four hundred universities around the world.



Trip to Koyasan



Koyasan



Accommodation in Hiroshima



Accommodation in Koyasan



Trip to Hiroshima

◆◆◆ Who is eligible for OUSSEP ? ◆◆◆

Academic Calendar

The academic year for regular educational programs in most Japanese universities, including Osaka University, begins in April and ends in March. However, the **OUSSEP** year which is divided into two 15-week semesters, runs from late September until early August of the following year. Half-year **OUSSEP** participants will join either of these 15-week semesters: September-February or April-August.

Academic Year: OUSSEP 2013 – 2014

Fall Semester

September 26, 27, 30, 2013

October 1, 2013

December 21, 2013-January 5, 2014

January 6, 2014

The middle of February, 2014

The middle of February-The end of

March, 2014

Orientation

Classes start

Year end/ New Year break

Classes restart

Classes end

Spring break

Spring semester

The beginning of April, 2014

The beginning of April, 2014

The beginning of August, 2014

Orientation

Classes start

Classes end

*Spring semester schedules can be revised, in accordance with Osaka University's 2014 academic year calendar, which will be finally approved in mid-2013.

English Requirements

As **OUSSEP** is an international program in which courses are taught in English, all applicants applying from non-English speaking countries have to demonstrate TOEFL 550 (PBT), 213(CBT), 80 (iBT), or more level English proficiency in their applications. IELTS(6.0 or higher), CPE and CAE will be considered.

Recommendations by Home Institutions

All applicants have to be short-listed by their home institution and their applications must be sealed and signed by the appropriate personnel within their institution. Official transcripts and letters of recommendation from academic staff are also essential for the eligibility of **OUSSEP** applications.

All applications should be made through the student's home institution.

5. What will I study in OUSSEP ?

Structure of the Program

The International Exchange subjects are offered by a variety of faculties, which are designed for mainly 3rd year undergraduate students. **OUSSEP** coordinators of the CIEE are in charge of the arrangements / coordination of the subjects.

i) International Exchange Subjects

In this English speaking program, the University tries to balance the number of students majoring in the fields of the physical sciences including engineering and health sciences, and humanities and the social sciences. Students may select their courses according to their major and interests. At the same time, students are encouraged to take courses outside their own major as this will help them to broaden their perspective and at the same time gain a deeper understanding of Japanese society and culture. All participants are expected to earn at least 14 credits from International Exchange Subjects per semester.

ii) Independent Study (Exclusive to OUSSEP-R)

A feature of the Full-year and Half-year **OUSSEP-R** programs is the independent study (2 credits per semester). **OUSSEP-R** applicants must propose a study topic and are then assigned to supervising professors in appropriate faculties. The student and their supervising professor will agree upon the scope and depth of the study at the beginning of the program. With respect to Full-year **OUSSEP-R** students, the study must continue for two semesters. At the end of each semester, the student will submit a report on his/her research to the supervising professor. Refer to the "Guide to Independent Study" found at the **OUSSEP** website for further details. Those who wish to undertake Independent Study in the **OUSSEP-R** program must fill out the Independent Study Proposal (Form:Ind.Study-1 and Form:Ind.Study-2) along with the other application documents.

Abatement of Independent Study Arrangement for Conventional OUSSEP or OUSSEP-J participants

In the 2013-14 program, the support for the independent study takers of **OUSSEP-R**, such as financial support, can be greatly extended. In light of this, the **OUSSEP** coordinators are no longer capable of making additional arrangements for the independent study for **Conventional OUSSEP** or **OUSSEP-J** students who have not submitted their study proposal at the time of application. What is more, since the independent study is an indispensable part of the **OUSSEP-R** program, those who are finally accepted to **OUSSEP-R** cannot withdraw their independent study from their study plans.

iii) CIEE Japanese Language Regular Course

OUSSEP students may take any of the five levels of Japanese courses (4 credits each semester), according to their proficiency level (elementary to advanced; indicated as JA 100 – JA 500). Students must take a placement test and Japanese language classes will take place three times a week. This is for **Conventional OUSSEP** and **OUSSEP-R** students. **This is also offered to OUSSEP-J students in the Spring semester.**

◆◆◆ What will I study in OUSSEP ? ◆◆◆

iv) CIEE Japanese Language Intensive Course (Exclusive to OUSSEP-J)

This intensive language unit (JAcc) is not a part of the exchange tuition fee waiver agreement, but a paid option which greatly enhances the language skills of those who start studying Japanese here in Japan. This costs 172,800 JPY for 135 classes. This is only available in the Fall semester and covers JA 100, JA 200 and JA 300 level Japanese classes, through which participants experience almost three times the intensive learning load than that of normal exchange students, such as **Conventional OUSSEP** or **OUSSEP-R**. In the Spring semester, this JAcc unit is not available. **OUSSEP-J** students should take the CIEE Japanese Language Regular Course with other category **OUSSEP**, such as **Conventional OUSSEP** or **OUSSEP-R**. Therefore, we do not admit any **OUSSEP-J** students for the Spring enrollment.

Osaka University expects as many as ten students to take this **OUSSEP-J** option, which will take place at our Minoh campus. Although JAcc units will not be awarded as Osaka University International Exchange Subject credits, they will be presented as an **OUSSEP-J** Japanese certificate which is worth 12 Japanese language credits. Besides the **OUSSEP-J** Japanese certificates, all **OUSSEP-J** students are expected to take any of the international exchange subjects (more than two credits) in order to meet our **OUSSEP** completion requirement of 14 credits per semester, which is specified below.

Completion of the OUSSEP Programs

All the courses offered for **Conventional OUSSEP** including the Japanese language course are electives. With respect to the **OUSSEP-R**, the independent study is compulsory and so are the intensive Fall semester Japanese units for the **OUSSEP-J** students. Students select and register for the options of their choice at their application. The minimum requirement in each semester for satisfactory completion of the **OUSSEP** programs is 14 credits. The International Affairs Committee of Osaka University will award Certificates of Completion to those students who have successfully completed **Conventional OUSSEP**, **OUSSEP-R** and **OUSSEP-J**. See chart on page 14 for the details of the requirements for completion.

Besides the International Exchange Subjects, their Independent Study and CIEE Japanese Language Regular Course, the University may include two of the Osaka University's regular credits towards the completion of **Conventional OUSSEP** and **OUSSEP-R**. For the Fall semester, the University does not include any regular credit for **OUSSEP-J** completion.



CIEE
(Suifu)



Graduate School / Faculty of Medicine
(Suifu)



Administration Bureau
(Suifu)

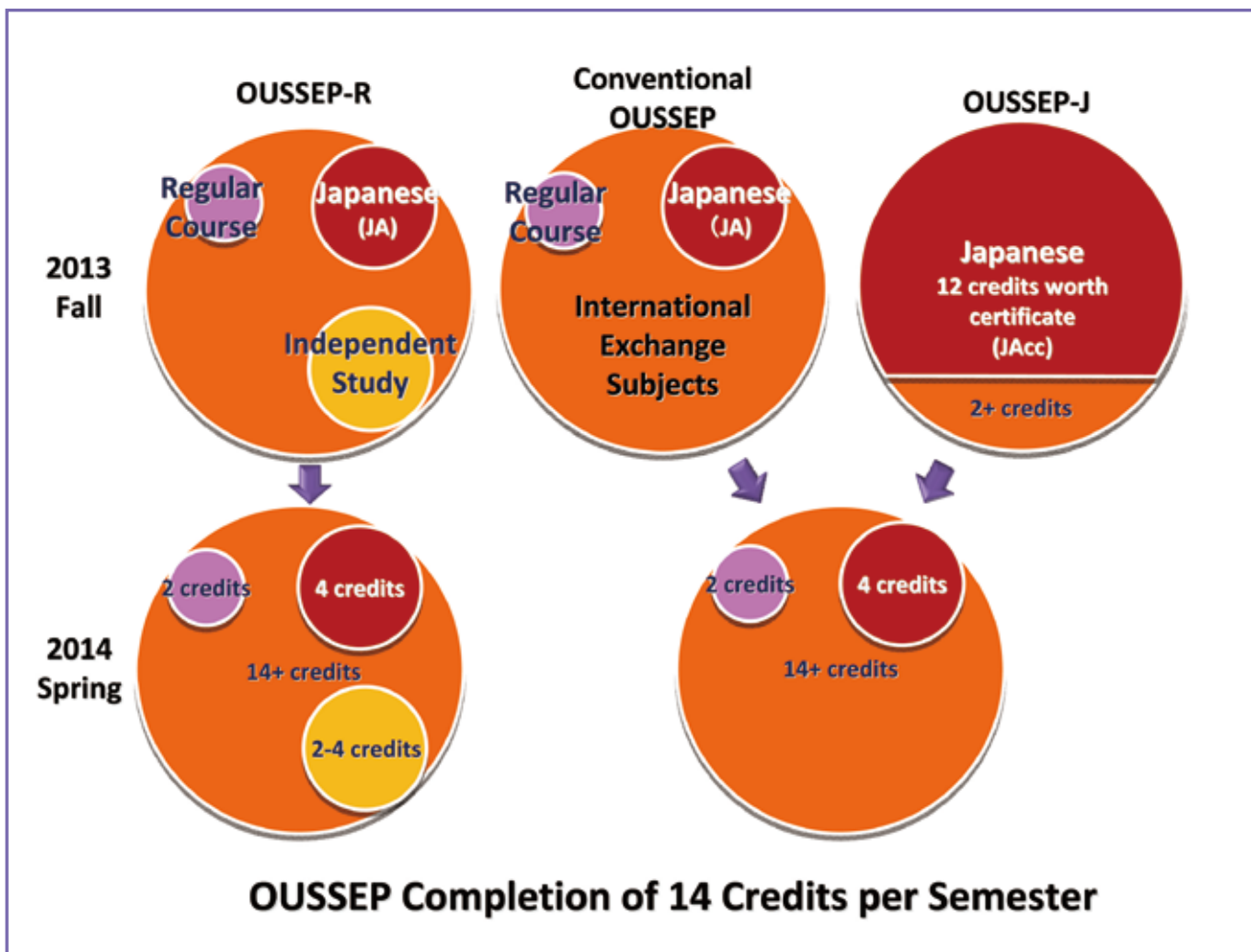
◆◆◆ What will I study in OUSSEP? ◆◆◆

Required Minimum Credit Points

	International Exchange Subjects			Special course	Regular Subjects	Completion
	International Exchange Subjects	Independent Study	JA Japanese	JAcc Japanese		
Conventional OUSSEP	8-14	×	(4)	×	[2]	14 or more
OUSSEP-R	4-12	2-4	(4)	×	[2]	14 or more
OUSSEP-J (Fall)	2	×	×	certificate worth 12 credits	×	2 or more plus certificate
OUSSEP-J (Spring)	8-14	×	(4)	×	[2]	14 or more

F: Fall semester S: Spring semester

The numbers in [square parentheses] stand for expected optional credits from regular subjects which are likely to be taken by students of each of the **OUSSEP** options.



◆◆◆ What will I study in OUSSEP ? ◆◆◆

International Exchange Activities

In addition to the academic programs, students are encouraged to participate in various international exchange activities throughout the year, which the CIEE organizes. Other groups including those within the University (such as the student-organized international exchange group of Brothers and Sisters Program (BSP)), as well as those in neighboring communities, also participate in these programs. One example of a neighboring community group is the Osaka University Host Family Program (OHP), which is coordinated by the CIEE and provides international students with an opportunity to closely interact with a local Japanese family living nearby the university.

Field Trips

The **OUSSEP** program offers field trips for students in order to give them opportunities to see as many things and to meet as many people as possible during their full-year or half-year stay in Japan. They visit industries and public institutions as a part of the academic courses and also go on trips, including overnight trips, to different parts of the country to meet local people and experience local cultures.



Miyajima



Trip to Hiroshima

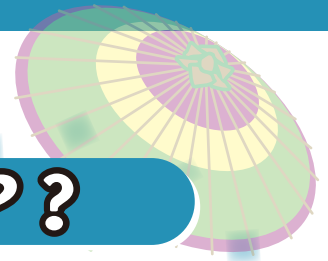


Trip to Koyasan



Miyajima

6. How do I apply to OUSSEP?



Admission Requirements

To be eligible for **OUSSEP** (**Conventional OUSSEP**, **OUSSEP-R** or **OUSSEP-J**), the applicant must:

1.	Be enrolled in one of the universities and colleges that have concluded Inter-University (or Inter-Faculty) Student Exchange Agreements with Osaka University, including the provisions for mutual tuition waiver and credit transfer.
2.	Normally, be a junior or senior (3rd or 4th year) full-time student in an undergraduate course at his/her home institution during his/her study duration as an OUSSEP student.
3.	Pay tuition fees to his/her home institution during his/her study duration as an OUSSEP student.
4.	Be recommended by the academic staff of his/her home institution.
5.	Return to his/her home institution upon completion of OUSSEP .

Knowledge of the Japanese language is not an essential requirement for students of the **OUSSEP** programs. Applicants of these English speaking courses must, however, be proficient in English. A TOEFL (Test of English as a Foreign Language) score of 550 or more on the paper based test (PBT) or 80 or higher on the internet based test (iBT), is a prerequisite for students from non-English speaking countries. Other internationally recognizable tests, such as IELTS 6.0 or higher, TOEIC 750 or higher, CPE or CAE can be considered. **Note that OUSSEP-J is an introductory level program for those who wish to start studying Japanese. If your main purpose for the exchange is to develop your already acquired Japanese language skills, consider joining other programs, such as Maple, instead of OUSSEP.**

Application Process

Students interested in **OUSSEP** should first consult their academic adviser and student exchange officer. On approval by the adviser, applicants should obtain the necessary forms from their university or college office. These should be completed and submitted, through the same office, to Osaka University together with supporting documents. The following documents are required:

All OUSSEP

1.	A completed OUSSEP application form (refer to Form: Appl). *A short essay of approximately 500 words in total outlining the student's rationale for joining the OUSSEP Program *A Financial Resources Confirmation
2.	At least two letters of recommendation written by faculty members of the home institution. Only one letter from a language instructor is acceptable. These letters should be written in either Japanese or English on the home institution's letterhead.
3.	Academic Transcripts.



◆◆◆ How do I apply to OUSSEP ? ◆◆◆

- | | |
|----|---|
| 4. | Certificate of English Language Proficiency (Applicants from non-English speaking countries). |
| 5. | Certificate of Enrollment at Home Institution with Institution's Seal. |

All documents above must be written in English, except for recommendation letters.

In addition to the above documents, **OUSSEP-R** and **OUSSEP-J** students should need additional requirements below, when they apply to Osaka University.

OUSSEP-R (OUSSEP with Research Option)

In addition to the above application documents, those who apply for the **OUSSEP-R** Program should submit the following:

- | | |
|----|--|
| 6. | Independent Study Form. |
| 7. | A proposed topic for the Independent Study Course of approximately 500 words in total. |



Accommodation in Koyasan



Miyajima

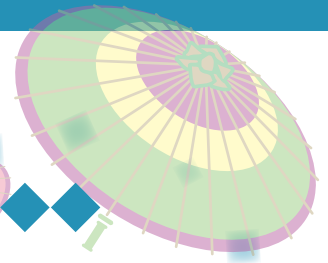
OUSSEP-J (OUSSEP with Japanese Option)

OUSSEP-J is a program for those who wish to start studying Japanese. Japanese learners at the levels of intermediate or higher should not apply to **OUSSEP-J**, but to the Maple program. **Also** note that, **OUSSEP-J** accepts only Fall semester enrollment and requires the participants to pay an estimated 172,800 JPY in order to take the JAcc intensive language unit. In order to be permitted to study as one of the **OUSSEP-J** students, participants have to pay this amount to Osaka University (CIEE) by early September 2013, before they arrive in Osaka.



Koyasan

◆◆◆ How do I apply to OUSSEP ? ◆◆◆



Original and Authentic Documents/Signatures

The University requires hand-written signatures in the application forms. The University also strictly requires all of the supporting documents to be original ones. Without proper authorization or authentic documents, it is not possible for the University to recognize the applicants as being serious enough and qualified candidates for the exchange.

In this way, the entire application process shall not be completed until the University receives the printed out application with hand-written signatures and original supporting documents. We do not accept photocopied or scanned supporting documents except for TOEFL/IELTS certificates.

Also, it is essential that all of the communications, including the submission of the application forms should be done between the coordinator of Osaka University and that of partner institutions. The University shall reject any applicants, who apply to the program without any recognition from their home university.



Hiroshima Peace Memorial Park



Trip to Hiroshima



Trip to Hiroshima



Ferry to Miyajima



◆◆◆ How do I apply to OUSSEP ? ◆◆◆

COORDINATORS



Nominations to OUSSEP at Home

- Applicant must be nominated as one of the OUSSEP applicants at their home institution.
- Applicant must have discussed their exchange plans with their coordinator and supervisor.
- Coordinator supervises the applicants' preparations, and distributes password for the PDF application to each applicant.

1. **We strongly recommend applicants to have all of their application documents ready in advance, before they fill-out the PDF application form.**
2. Choose an appropriate OUSSEP option, (the one that matches the expectations of the individual applicant) either as **Conventional OUSSEP**, as **OUSSEP with Research Option (OUSSEP-R)** or as **OUSSEP with Japanese Option (OUSSEP-J)**.
3. Applicants are expected to have calculated their JASSO GPA scores as well.
4. An applicant will then fill out a PDF formatted application, with his/her personal information, proposed program, duration, essay, financial supporter's information and so on (see below for documents required).
5. **OUSSEP-R applicants must prepare for the independent study proposal.**

	Application	Recommendation letters	Transcript	Financial resources confirmation	Independent study form	Estimated class size
Conventional OUSSEP	◎	◎	◎	◎	---	20
OUSSEP-R	◎	◎	◎	◎	◎	20
OUSSEP-J	◎	◎	◎	* 178,200JPY extra shall be required	---	10

6. **OUSSEP-J applicants must fill out a Financial Resources Confirmation which clarifies that they have the financial means necessary to cover the extra 178,200 JPY required for the Intensive Japanese option.**
7. Osaka University naturally expects, all of the PDF formatted application forms to be printed out by applicants, and signed by applicants and coordinators, using a pen or ball-point pen.
8. The University and JASSO shall not accept any documents without appropriate written confirmation or confirmation signatures written using erasable pencils.



Send Hard-copy Forms to Osaka University through the Office

- Coordinator collects the completed paper application forms and some other supporting documents from individual students.
- Coordinator checks and certifies the application documents using his/her own signature.
- Coordinator sends the documents to Osaka University by post or international courier services.

◆◆◆ How do I apply to OUSSEP ? ◆◆◆

APPLICANTS

1. Student exchange is an inter-university business. So that those who are not nominated by the student exchange coordinator / officer shall be automatically disqualified.
2. If you are short-listed as an OUSSEP 2013-2014 applicant from your institution, read the **OUSSEP** Calendar carefully (this leaflet) and understand the characteristics of this English speaking program.
3. Obtain password from coordinator.
4. Those who apply from non-English speaking countries need TOEFL scores of 550 (PBT), 213 (CBT), 80(iBT), 6.0 (IELTS) or higher.



Preparations on the Computer

- Prepare well for the documents, such as Personal Information, GPA calculation, Essay and Research Proposals, beforehand.
- Use a computer with internet access, which OS is either Windows XP/Vista or higher (Windows) or MAC OS X 10.5 or higher (MAC).
- Using password, open the Osaka University PDF application form.



Preliminary Submission through Internet

- Copy and Paste from the documents you have prepared for the Osaka University PDF application form.
- Once you fill out the form, save the application as a PDF and send it to exchange@isc.osaka-u.ac.jp by March 20, 2013 (Fall Enrollment) or November 01, 2013 (Spring Enrollment).
- At this stage, Osaka University recognizes you as a potential OUSSEP candidate, **but without the process below, you shall not be short-listed as a qualified OUSSEP 2013-14 candidate.**



Written Confirmation / Authorizations

- Print-out the PDF forms, and double check that the entire application has been filled in correctly.
- Then fill out appropriate fields in your own hand writing. Use a pen or ball-point pen.
- Ask your supervisor to sign the document as well.

1. Before submitting the documents to the international office of your home institution, please use the check list to confirm whether your documentations are sufficiently prepared.
2. Osaka University never accepts any **OUSSEP** applications sent by individual applicants. **All OUSSEP applications must be posted by exchange coordinators / international officers with their appropriate authorizations.**
3. Documents must arrive at Osaka University no later than March 30, 2013 (Fall Enrollment) or November 10, 2013 (Spring Enrollment).



◆◆◆ How do I apply to OUSSEP ? ◆◆◆

Selection Process for the 2013 Fall Enrollment

The International Affairs Committee of Osaka University will be responsible for selecting the students to be admitted to **OUSSEP**. The International Affairs Committee will decide its final selection by the end of May. Understand that withdrawal from **OUSSEP** of any applicant after this point will be highly detrimental to the program.

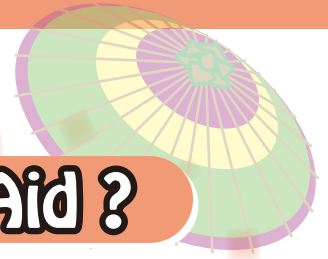
In the middle of June, upon approval by the committee, Osaka University will immediately file JASSO applications for those applicants selected, except for those who do not need the scholarship. At the same time, Osaka University will officially notify the applicants and their home universities of the decision regarding admission to **OUSSEP**. We will notify those admitted and their home universities of the official decisions concerning JASSO Scholarships by the end of June.

Selections for OUSSEP-R and OUSSEP-J

With respect to the new options of **OUSSEP**, **Conventional OUSSEP**, **OUSSEP-R** and **OUSSEP-J**, Osaka University will make final selections under the general guidelines below:

- (1) All of the documents of **OUSSEP** applicants shall be examined by the **OUSSEP** Working Group (WG) of the Osaka University International Affairs Committee. WG will be responsible for shortlisting **OUSSEP** candidates and JASSO scholarship awardees candidates amongst applicants.
- (2) The applicants who sent the documents without independent study forms shall be considered as **Conventional OUSSEP** applicants, not as **OUSSEP-R**.
- (3) The applicants who clearly indicate taking the intensive Japanese Option shall be considered as **OUSSEP-J** applicants.
- (4) With respect to **OUSSEP-J** and **OUSSEP-R**, WG puts higher priority upon Full-year students rather than Half-year participants, for the JASSO scholarship. **If sufficiently qualified, WG endeavors to allocate all Full-year OUSSEP-J participants to be awarded with JASSO grants.**
- (5) Any applicants who apply for **OUSSEP-J** for the Spring enrollment shall be automatically accepted for **Conventional OUSSEP** (because there is no intensive Japanese JAcc unit available in the Spring semester).
- (6) The WG estimates the student numbers of each option as follows: 20 students for **Conventional OUSSEP**, 20 students for **OUSSEP-R** and 10 students for **OUSSEP-J**.
- (7) If the numbers of applicants exceed the above estimated size of each option, the WG will be forced to optimize the size of participants amongst the three options. If so, in order to offer the best Japanese language education for the best category of students, WG may admit a certain number of **OUSSEP-J** applicants with the conditions to be transferred to **Conventional OUSSEP** participants.
- (8) If the research proposals of particular **OUSSEP-R** applicants are not accepted by supervising professors, WG will likely offer a **Conventional OUSSEP** slot, instead of **OUSSEP-R**, to the applicants.
- (9) The **OUSSEP-J** applicants who fail to pay the optional program fee (est. 172,800 JPY) by the due date (September 2013) will be disqualified from **OUSSEP-J**. His/her **OUSSEP-J** slot can be offered to someone else. He/she will be, instead, offered a **Conventional OUSSEP** option.
- (10) Due to various reasons, it is rarely possible to change the Research or Japanese options in the middle of terms or between the semesters. **Choose the most appropriate options at the time of application.**

7. How do I apply for Financial Aid ?



JASSO Short-Term Student Exchange Promotion Program (Inbound) Scholarship

Prospective **OUSSEP** students whose academic record is GPA 2.30(see page 23) or above are eligible to apply for the following scholarship offered by the Japanese government, namely the Japan Student Services Organization (JASSO). However, those who receive financial aid from other sources, worth 80,000 JPY or more, are not eligible to apply for the scholarship from JASSO. Please also note that in the present financial climate, qualifying for JASSO scholarships has become more difficult.

Under these circumstances, as a general rule, Osaka University allocates JASSO scholarships, a monthly stipend of about 80,000 JPY to each scholarship awardee under the following rules:

1. Osaka University will not award more than two JASSO scholarships to the applicants who are sent from the same university.
2. Osaka University prioritizes Full-year **OUSSEP** students over Half-year participants.
3. Osaka University prioritizes **OUSSEP-J** students who are obliged to pay 172,800 JPY to participate in the Fall-semester intensive program option.
4. Osaka University prioritizes **OUSSEP-R** students who will likely enhance their academic potential at Osaka University through their individual research.

We request applicants to refrain from applying for JASSO scholarships concurrently with other Japanese universities.

JASSO scholarship awardee students will receive a stipend of 80,000 JPY per 31 days.

Tuition Waiver

The tuition fee for the degree courses at Osaka University is currently 14,400 JPY per credit. The fee is liable to change without notice. Students from institutions that have concluded a mutual tuition waiver contract with Osaka University will be granted a tuition waiver. Although the intensive Japanese language unit (JAcc) for **OUSSEP-J** is excepted, **OUSSEP-J** students could have their tuition fees waived when they take international exchange subjects and regular courses.



Trip to Hiroshima



Hiroshima Peace Memorial Park



◆◆◆ How do I apply for Financial Aid ? ◆◆◆

GPA Requirement for JASSO Applicants

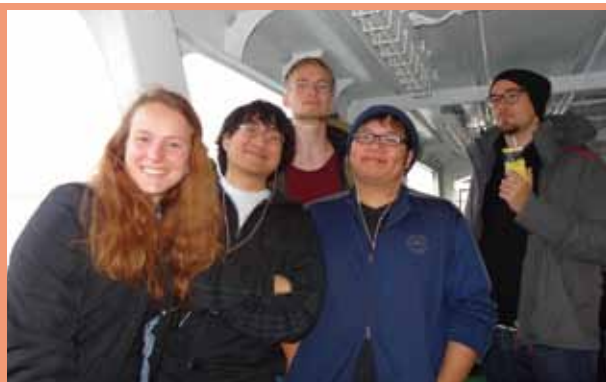
In order to receive a grant from JASSO, applicants must satisfy JASSO's General Pass Average (hereafter referred to as GPA) markings of 2.30 out of 3.0 JASSO GPA.

How to Calculate JASSO GPA

	Grade				
Pattern 1		Excellent	Good	Sufficient	Fail
Pattern 2		A	B	C	F
Pattern 3		100-80	79-70	69-60	59 and below
Pattern 4	100-90	89-80	79-70	69-60	59 and below
Pattern 5	S	A	B	C	F
Pattern 6	A	B	C	D	F
Grade Point (GP)	3	3	2	1	0

Use the formula below to calculate GPA (Round to two decimal places).

$$\frac{(Total\ Credits\ of\ GP3) \times 3 + (Total\ Credits\ of\ GP2) \times 2 + (Total\ Credits\ of\ GP1) \times 1 + (Total\ Credits\ of\ GP0) \times 0}{Total\ Credits}$$



Ferry to Miyajima



Assembly



Miyajima



Miyajima

8. How do I obtain a Student Visa ?

Ryugaku (Student) Visa

Before coming to Japan, accepted students need to obtain a "Student" (Ryugaku) visa, issued by the Japanese Embassy or Consulate, in their country of residence.

We will send a letter of acceptance to students who are officially accepted to **OUSSEP**. At this time, Osaka University will request that the Japanese Immigration Bureau issue a Certificate of Eligibility for Status of Residence (CESR) for each of the students. Only the latter document will serve as proof of status when applying for a visa, to enter Japan as a student.

The process of obtaining a CESR takes time and the certificate usually does not come through until early September. We will forward the CESR by an express courier service to each student's summer address as indicated in the **OUSSEP** Application Form. We often have to make urgent contact with applicants during the summer.

It is important therefore that applicants provide us with accurate information about their summer address, including street address, phone and fax numbers, and e-mail address.

Each applicant should follow the advice of the Japanese diplomatic office in his/her home country concerning the procedure for obtaining an appropriate visa.



Farewell Party

Avian Influenza (Bird Flu) / New Strains of Influenza

In order to prevent the spread of avian influenza together with new strains of influenza, and thus maintain the university's pleasant education and research environment, Osaka University has promoted the early detection of any cases of the above illnesses. Osaka University shall take necessary actions in order to decrease the sphere of possible infection.

OUSSEP Home Page

More Information related to **OUSSEP**, including study and living guides for students will be found at the **OUSSEP** web site.

<http://ex.isc.osaka-u.ac.jp/oussep/>



9. Life in Osaka

Housing

Osaka University will have a room ready for each of the participants by the time they arrive. Osaka University will make its best effort to provide the **OUSSEP** program participants with reasonably priced accommodation in one of the University residences for overseas students located near the three campuses. Due to an increase in demand for campus dormitories by international students, however, we have to optimize the University resources for the most eligible students. In the 2012-2013 period, self-funded students (without JASSO grants) had higher priority in receiving the low-cost university accommodation than the JASSO scholarship awardees. The University will maintain the same policy during the 2013-2014 period. Needless to say, Osaka University's International Student Affairs Division will certainly help all well qualified exchange students to find relatively reasonably priced accommodation.



UR Flat

Well equipped off-campus apartments are offered for limited numbers of international students, who study in the **OUSSEP** program. Since the 2011 period, **OUSSEP** operates off-campus accommodations in collaboration with UR (Urban Housing Agency). In principle, the **OUSSEP** coordinator allocates JASSO scholarship awardees to the UR Senri-Aoyamadai Flat. The residents share an apartment flat between two **OUSSEP** students, and reside with Japanese people from the local community. Off-campus UR Flat residents can experience real Japan and exchanges with Japanese people.

Those who wish to stay in a private apartment house in the Osaka area should expect their average monthly living expenses (food, rent, and transportation) to be no less than 120,000 JPY. The University does not currently arrange home-stays for exchange students.

Note that, in principle, those who decide not to live in the university arranged rooms, are no longer eligible to apply to the same kind of university organized rooms again. Those who need special considerations with their accommodation, such as the physically handicapped, please inform us in advance.

Any students who prefer staying in private accommodation not arranged by the university, please inform us, but be advised that contracts with private housing agencies will be the sole responsibility of the student.

Health and Liability Insurance

Upon arrival in the Osaka area, **OUSSEP** students must join three insurance plans arranged by the University, which includes the compulsory National Health Insurance (NHI), the Disaster and Accident Insurance for Student Education and Research (PAS) and the Comprehensive Insurance for Students Life coupled with PAS. These plans cover medical care and hospitalization. The cost is reasonable and will be **the responsibility of** the students. In addition, students are expected to have overseas travelers' personal accident insurance. **It is the students' own responsibility to buy those insurances in order to cover their own risk. OU staff and OUSSEP coordinators collect information of insurance details of each participant during orientation.**

◆◆◆ Life in Osaka ◆◆◆



Some students may have already bought international insurance in their home countries, and are not pleased to have to join the above plan provided by the University. Note that in the event they need personalized certified translations for their own insurance companies, such as medical certificates or police accident reports, the University is not able to translate these official documents. Students will need to find professional translation services by themselves outside the University. Also, note that you should pay the medical fees at first by yourself, and after you have got receipts, you should ask for refunds from the insurance companies by yourself, even if you have joined an international insurance policy in your home country.

GCN - Osaka (Global Campus Net Osaka)

Osaka University provides the unique online virtual community of GCN-Osaka, which is primarily aimed at foreign researchers and international students at Osaka University. On this site, information for foreigners such as online Japanese learning materials, medical/child care information, scholarship information, database for private accommodations, second hand goods information, etc. is posted, and exchanging information between fellow community members is possible through the use of a bulletin board system or forum (BBS). This BBS is designed to be multilingual, so foreigners can use their native language to exchange information. The BBS can be used to exchange information and receive online counseling on studying abroad. Prospective students of the **OUSSEP** program are able to get their IDs and Passwords before they come to Osaka through the home page below, and are able to prepare for their studies at Osaka University, such as using the e-learning materials.

<http://www.gcn-osaka.jp/>



IRIS



Assembly



Sports Day held within the Local Community



Miyajima



10. Campus Map

Toyonaka Campus



- ① Center for Education in Liberal Arts and Sciences
- ② Osaka University Hall (Kaitokudo for the 21st Century)
- ③ Graduate School of Language and Culture
- ④ Toyonaka Branch, Center for International Education and Exchange
- ⑤ School of Letters
- ⑥ School of Economics
- ⑦ School of Law
- ⑧ University Library
- ⑨ School of Engineering Science
- ⑩ Cybermedia Center Main Hall of Toyonaka
- ⑪ Gymnasium
- ⑫ Low Temperature Center
- ⑬ Renovation Center of Institute for Science Education and Technology
- ⑭ School of Science
- ⑮ International House, Toyonaka
- ⑯ Radioisotope Research Center
- ⑰ Research Center for Materials Science at Extreme Conditions
- ⑱ Research Center for Solar Energy Chemistry
- ⑲ Health Care Center
- ⑳ Museum of Osaka University
- ㉑ Osaka School of International Public Policy



New Student Union Building



Toyonaka Campus



Toyonaka Main Gate

◆◆◆ Campus Map ◆◆◆

Suita Campus



- ① Administration Bureau
- ② School of Human Sciences
- ③ School of Pharmaceutical Sciences
- ④ Research Institute for Microbial Diseases
- ⑤ Institute for Protein Research
- ⑥ School of Engineering
- ⑦ Institute of Scientific and Industrial Research
- ⑧ Low Temperature Center
- ⑨ Science and Engineering Library
- ⑩ Institute of Laser Engineering Experimental Building
- ⑪ Cybermedia Center
- ⑫ Institute of Social and Economic Research
- ⑬ Research Center for Ultra-High Voltage Electron Microscopy
- ⑭ Joining and Welding Research Institute
- ⑮ Research Center for Nuclear Physics
- ⑯ School of Dentistry
- ⑰ Osaka University Dental Hospital
- ⑱ Health Care Center
- ⑲ Radioisotope Research Center
- ⑳ Graduate School of Frontier Biosciences
- ㉑ Welfare Building of Univ. CO-OP
- ㉒ Faculty of Medicine
- ㉓ Osaka University Hospital
- ㉔ Life Sciences Library
- ㉕ Administration Office of the School of Engineering
- ㉖ International Center for Biotechnology
- ㉗ Faculty of Medicine (Dept. of Allied Health Sciences)
- ㉘ Graduate School of Information Science and Technology
- ㉙ Convention Center
- ㉚ Research Center for Environmental Preservation
- ㉛ Gymnasium
- ㉜ **Center for International Education and Exchange**



Faculty of Medicine and University Hospital



Suita Campus



Suita Main Gate



◆◆◆ Campus Map ◆◆◆

Minoh Campus

- ① Administration Building (Health Care Center)
- ② International Studies Library
- ③ Classrooms and Faculty Offices of SFS (Building A, Minoh Student Center)
- ④ **Minoh Branch, Center for International Education and Exchange**
- ⑤⑥⑦ Classrooms and Faculty Offices of SFS (Building C,D,E)
- ⑧ Research Institute for World languages
- ⑨ **Center for Japanese Language and Culture (incl. International Students Affairs Division)**
- ⑩ Gymnasium
- ⑪ Welfare Building of Univ. CO-OP (incl. Bookshop and Cafeteria)
- ⑫ Minoh International Student Dormitory (incl. Cafeteria)
- ⑬ Dormitory
- ⑭ Minoh International Student House
- ⑮ Training Camp
- ⑯ Extra Curricular Activities Facilities
- ⑰ Lodging Facilities (Minoh Kaikan)
- ⑱ OUFs Memorial Hall
- ⑲ Guard

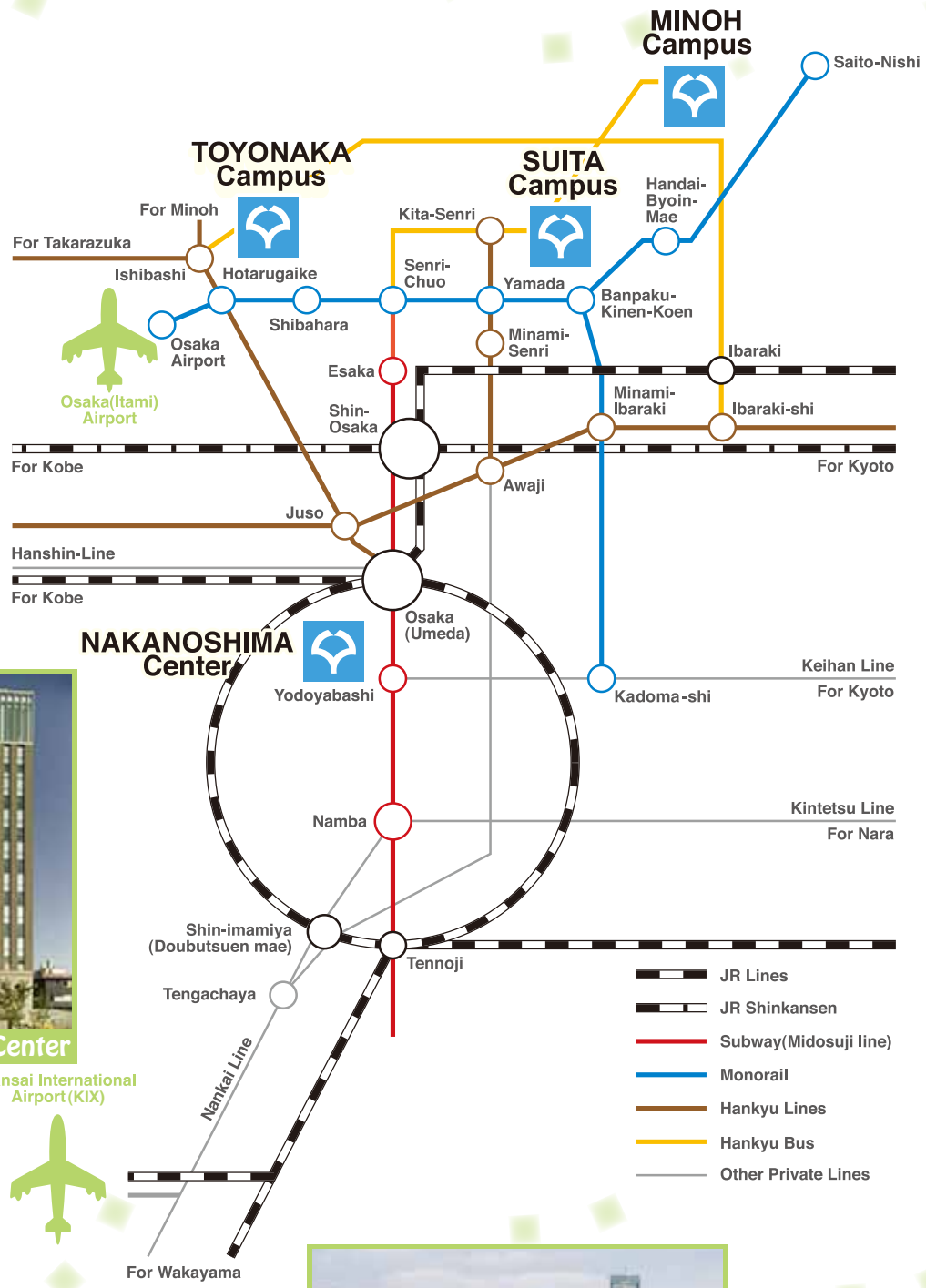
SFS: School of Foreign Studies



◆◆◆ Campus Map ◆◆◆



Transportation from the City of OSAKA to the Campuses



Nakanoshima Center

Kansai International Airport (KIX)



City of Osaka

- JR Lines
- JR Shinkansen
- Subway (Midosuji line)
- Monorail
- Hankyu Lines
- Hankyu Bus
- Other Private Lines



11. Course Outline

Fall Semester 2013: Full-year OUSSEP, Half-year OUSSEP

Title	Lecturer	School/Graduate School	Schedule	Venue
Literature and language of Japan and China	Rintarou GOUYAMA	Letters	Thu.2	Toyonaka
Seminar Course for Intercultural Understanding	Tomoya HORIKAWA	Foreign Studies	Wed.5	Minoh
Japanese Literature, Modern and Contemporary	Andrew MURAKAMI-SMITH	Language and Culture	Thu.3	Toyonaka
Issues in Gerontology	Hiroshi UEDA	Human Sciences	Wed.3	Suita
Gender Studies	Beverly Anne YAMAMOTO		Fri.3	Suita
Invitation to Systems Science	Toshimitsu USHIO	Engineering Science	Mon.5	Toyonaka
Experimental Mathematics	Joe SUZUKI	Science	Tue.3	Toyonaka
Cell Biology	Kotaro KIMURA		Tue.2	Toyonaka
Electrical Engineering in the 21st Century	Tsuyoshi FUNAKI	Engineering	Fri.4	Suita
Introduction to Global Architecture - Role of Global Architecture in Sustainable Development -	Masahiko FUJIKUBO		Fri.5	Suita
Approaches to Understanding Cultures	Tomoko ARIKAWA	Center for International Education and Exchange	Thu.4	Toyonaka
Media and Communications in Japan	Sachihiko KONDO		Mon.3	Suita
Urban Disaster Prevention	Juan Jose CASTRO		Mon.2	Suita
Educational Psychology	Kiho TANAKA		Tue.4	Toyonaka
Japanese JA100	Ayako OKADA		3 classes per Week	Toyonaka/Suita
Japanese JA200	Yozo OKAZAKI		3 classes per Week	Toyonaka/Suita
Japanese JA300	Koichi NISHIGUCHI		3 classes per Week	Toyonaka/Suita
Japanese JA400	Koji NAMBA		3 classes per Week	Toyonaka/Suita
Japanese JA500	Shinya OTANI		3 classes per Week	Toyonaka/Suita

◆◆◆ Course Outline ◆◆◆

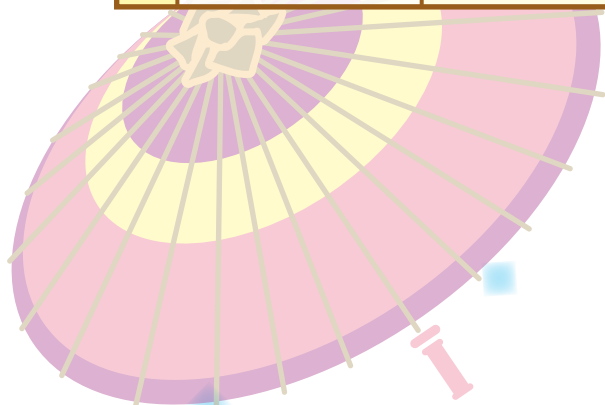
Spring Semester 2014: Full-year OUSSEP, Half-year OUSSEP

Title	Lecturer	School/Graduate School	Schedule	Venue
Philosophical Thinking and Japanese Traditions	Osamu UENO	Letters	Tue.2	Toyonaka
Seminar Course for Intercultural Understanding	Tomoya HORIKAWA	Foreign Studies	Fri.3	Minoh
Osaka in Modern Japanese Literature	Andrew MURAKAMI-SMITH	Language and Culture	Thu.2	Toyonaka
Topics in Japanese Law	Undecided	Law	Thu.3	Toyonaka
Topics in Comparative Law	Undecided		Thu.4	Toyonaka
Introduction to Economics	Yukihiro NISHIMURA	Economics	Tue.3	Toyonaka
Selected Topics in Today's Biological Science	Akihiko OGURA	Science	Tue.4	Toyonaka
Introduction of Mechanical, Materials and Manufacturing Science	Toshiyuki ENOMOTO	Engineering	Mon.3	Suita
Health Service and Medical Care in Japan	Morio IINO	Medicine	Mon.2	Suita
Japan: Society and Ideology	Sachihiko KONDO	Center for International Education and Exchange	Wed.3	Suita
Japanese JA100	Undecided		3 classes per Week	Toyonaka
Japanese JA200	Undecided		3 classes per Week	Toyonaka/Suita
Japanese JA300	Koichi NISHIGUCHI		3 classes per Week	Toyonaka/Suita
Japanese JA400	Koji NAMBA		3 classes per Week	Toyonaka/Suita
Japanese JA500	Shinya OTANI		3 classes per Week	Toyonaka/Suita

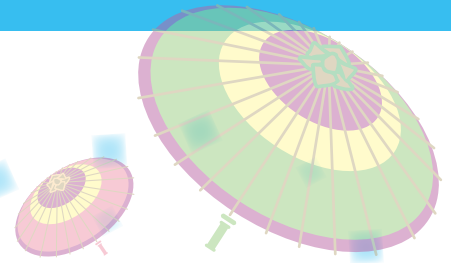
Time Table

Fall semester (2013)

	Monday	Tuesday	Wednesday	Thursday	Friday
	Toyonaka/Suita	Toyonaka	Toyonaka/Suita/Minoh	Toyonaka	Suita
1		Japanese JA (100,200,300,400,500)	Japanese JA (100,200,300,400,500)	Japanese JA (100,200,300,400,500)	Japanese JA (100,200,300,400,500)
2	Urban Disaster Prevention	Cell Biology		Literature and language of Japan and China	
3	Media and Communications in Japan	Experimental Mathematics	Issues in Gerontology	Japanese Literature, Modern and Contemporary	Gender Studies
4		Educational Psychology		Approaches to Understanding Cultures	Electrical Engineering in the 21st Century
5	Invitation to Systems Science		Seminar Course for Intercultural Understanding		Introduction to Global Architecture - Role of Global Architecture in Sustainable Development -



◆◆◆ Time Table ◆◆◆



Spring semester (2014)

	Monday	Tuesday	Wednesday	Thursday	Friday
	Suita	Toyonaka	Toyonaka/Suita	Toyonaka	Suita/Minoh
1		Japanese JA (100,200,300,400,500)	Japanese JA (100,200,300,400,500)	Japanese JA (100,200,300,400,500)	Japanese JA (200,300,400,500)
2	Health Service and Medical Care in Japan	Philosophical Thinking and Japanese Traditions		Osaka in Modern Japanese Literature	
3	Introduction of Mechanical, Materials and Manufacturing Science	Introduction to Economics	Japan: Society and Ideology	Topics in Japanese Law	Seminar Course for Intercultural Understanding
4		Selected Topics in Today's Biological Science		Topics in Comparative Law	
5					



12. Students' Quotes

Students' Comments

It was my best decision of 2012 to come to Osaka University. Thanks to **OUSSEP** and students from all over the world, I could not only enjoy Japan but feel like I was traveling to different countries every day. I will never forget every moment I spent with my dear friends here in Osaka. Thanks, **OUSSEP!** Hongryung, Korea

"Life is a journey" - someone said, and I will always be happy to think that one of my journey is the most priceless experience in Japan that I might never experience if I am not an **OUSSEP** student. Thanks to Osaka University who gave me a chance to come here! Nattarat, Thailand

'**OUSSEP** provides a great opportunity for me to meet people from different countries and cultures. At the same time, I am able to learn Japanese and know more about Japanese culture. Don't miss this golden opportunity to broaden your horizons and learn in a multicultural environment!' Christina, Hong Kong

Staying in Osaka while connecting to the globe, **OUSSEP** not only open a door to knowledge but to the dreamlike outer world. Unforgettable and regretless. I am enjoying it! Shidian, China

One of the best experiences I have ever had in my life. Not only you can learn about Japanese culture, but also about other cultures from all over the world. Lysaris, Mexico

The crossover between city & nature, tradition & technology, and education & entertainment. Handai is absolutely the right place for those who seek the harmonious student exchange life. Register for this class: 'Studying Osaka':) Phraewphan, Thailand

The **OUSSEP** program provides an opportunity to undertake independent study related to your research interests, while allowing plenty of free time to enjoy the Osaka lifestyle. Amelia, Australia

OUSSEP is a program in which you can meet a lot of friends from different parts of the world. Also, There is excellent supports by the staff and teachers. Kwan, Hong Kong

Learning about topics that interest you, making friends with amazing people, and immersing yourself in Japanese culture - this combination makes **OUSSEP** an experience you will never forget!
Michal, Germany



Miyajima



Miyajima

◆◆◆ Students' Quotes ◆◆◆

The **OUSSEP** program contains a wide variety of classes, from physics to literature, so that everyone can follow classes that suit their individual wants and needs.

As for my own experience: Thanks to the **OUSSEP** program, I have been able to follow classes that take me outside the field of my study and thus broaden my horizons. Leonie, Netherlands

OUSSEP program is a great opportunity to learn more about Japan and Japanese culture. Courses that are offered give variation and have a very useful content. Jonas, Finland

OUSSEP is a great opportunity to not only learn Japanese but to meet people from all over the world. Learning in an international environment has enriched my view on other cultures. Sarah, Germany

I never imagined I would experience such an accomplished combination of academics and cultural insertion. Programs like **OUSSEP** make the world a better place. It has completely changed my brain. Tayo, Denmark

If cultural diversity and awareness is within your interests, **OUSSEP** is the right program for you. Apart from learning the Japanese culture, you will also interact with other international students, opening your eyes to the many cultures you just read in books before. You will see and experience the things you have heard or read and you will learn a great deal from it. You will have a better understanding what diversity means and in turn, will make you appreciate the cultural richness of your own country. Rizza Nica, Philippines

It's a program to widen your horizons and become international. I'm so happy and satisfied with everything here. You won't miss this meaningful program being an Ousseper! Shengxiang, China

My **OUSSEP** experience has been a very enriching one. Seeing Japan and making friends from countries around the world, it makes me grateful there are such opportunities to study abroad. Jason, USA

'Participating in the **OUSSEP** program is one of the best experiences I've ever had!! I met people from all over the world and my Japanese improved a lot. I was also happy to make Japanese friends and experience their culture first hand!' Liana, France



Miyajima



Miyajima

Year at OUSSEP



My University & My Country



Ferry to Miyajima



Library Orientation



My University & My Country



Last Assembly



Trip to Koyasan



Hiroshima Peace Memorial Museum

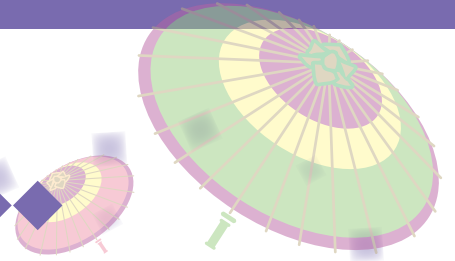


Miyajima



With Host Family

◆◆◆ Year at OUSSEP ◆◆◆



Trip to Hiroshima



Tanabata Party



Accommodation in Hiroshima



Koyasan



Miyajima



Henjokoin in Koyasan



Hiroshima Peace Memorial Park



13. Terminologies

Following is an explanation of some of the abbreviations and terminology used in the OUSSEP program

OUSSEP: This stands for Osaka University Short-Term Student Exchange Program.

CESR: Certificate of Eligibility for Status of Residence, which is necessary for an overseas student to get a student visa. In order to receive the certificate, the **OUSSEP** participants are expected to follow the instructions of OU's International Student Affairs Division, once they get official letters of admission.

CIEE: Center for International Exchange and Education. This Center was founded in 1992, and has been responsible for the coordination of student exchange at OU. The programs on this calendar are entirely coordinated by CIEE staff. It also provides Japanese classes for **OUSSEP** students for up to three classes per week.

CJLC: Center for Japanese Language and Culture. In 1954, the Center was first established as the Special Course for Foreign Students at OUFS. In 2005, the institution was renamed as the CJLC. It provides International Exchange Subjects (English) in Japanese studies and core Japanese language classes for Maple students. It is also responsible for the Maple educational program. (Refer Maple)

Conventional OUSSEP: One of the three options of the **OUSSEP** program. This is an English speaking program one or two semesters in length consisting of the international exchange subjects. The participants may take JA Japanese courses, according to their level or ability.

International Exchange Subject: Special academic lectures taught in English and administrated by the International Affairs Committee. Domestic students may attend the classes with **OUSSEP** students. CJLC's courses offering Japanese studies are also included in this category.

JA: Comprehensive Japanese classes for **OUSSEP** students for up to three classes per week, from the beginner (JA100) to the advanced level (JA500).

JAcc: Intensive Japanese class option for **OUSSEP-J** students for up to nine classes per week. It covers beginner (JA100 equivalent) to intermediate (JA300 equivalent) in the Fall semester only. This Japanese option is not available in the Spring semester.

JASSO: Japan Student Services Organization. The main funding body of the **OUSSEP** program:
http://www.jasso.go.jp/index_e.html

Maple: A program focused on the Japanese language and culture. CJLC is responsible for its academic content and day to day operations with participants, such as the offering of individual academic advice. (Refer CJLC)

OU: Osaka University

OUFS: (former) Osaka University of Foreign Studies

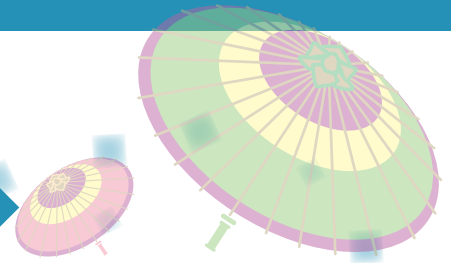
OUSSEP-J: One of the three options of the **OUSSEP** program, which stands for **OUSSEP** with Japanese Option, in which the participants take the JAcc class in the Fall semester. Those who participate for two semesters will study almost the same as a **Conventional OUSSEP** student in the Spring semester, taking JA Japanese classes. This option does not offer a Spring enrollment.

OUSSEP-R: One of the three options of the **OUSSEP** program, which stands for **OUSSEP** with Research Option. This is an English speaking program which can be taken for one or two semesters consisting of the international exchange subjects and independent study. The participants may take JA Japanese courses, according to their level or ability.

TOEFL: Test of English as a Foreign Language. PBT refers to Paper Based Test. PBT 550 is almost equal in proficiency to the CBT (Computer Based Test) 213 and iBT (internet Based Test) 80 score range.

<http://www.ets.org/toefl>

◆◆◆ Terminologies ◆◆◆



Application Deadline:

Fall of 2013 Enrollment / March 20, 2013 (by e-mail)

March 30, 2013 (by post)

Spring of 2014 Enrollment / November 01, 2013 (by e-mail)

November 10, 2013 (by post)

Documents must arrive at Osaka University no later than above dates.

Individual students should refrain from sending inquiries directly to Osaka University. The **OUSSEP** program is an inter-institutional exchange program. Students should therefore direct inquiries to the relevant office at their home institutions. The application should be sent as a complete package containing all of the necessary documentations. Please use the application check-list. It is important that applicants provide us with accurate information about their vacation address, including street address, phone and fax numbers as well as an e-mail address. All of the application documents should be addressed and sent to:

International Student Affairs Division
Osaka University
1-1 Yamadaoka, Suita,
Osaka 565-0871 Japan
e-mail: exchange@isc.osaka-u.ac.jp

OUSSEP CALENDAR 2013-2014

January 2013

International Affairs Committee

Edited by OUSSEP Coordinators:

Sachihiko Kondo

Yukiko Toyono





CONTACT

INTERNATIONAL STUDENT AFFAIRS DIVISION

OSAKA UNIVERSITY

1-1 YAMADAOKA, SUITA

OSAKA 565-0871 JAPAN

TEL:+81-6-6879-4026 FAX:+81-6-6879-8964

